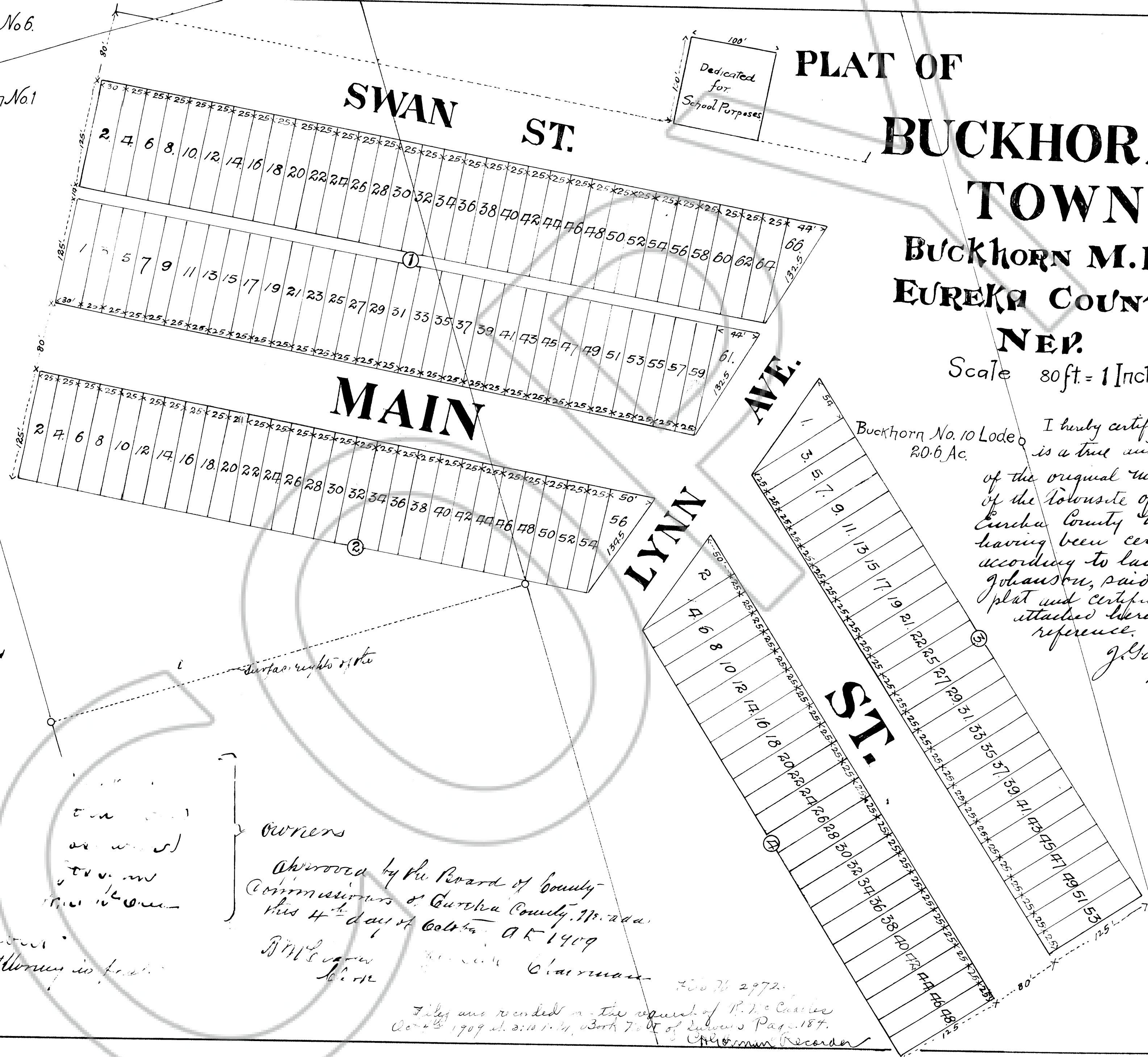
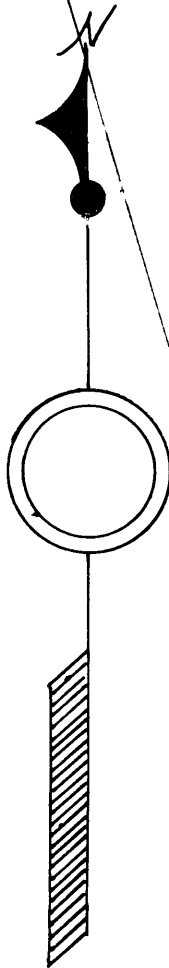


S 1/2 Buckhorn No. 6
10.3 Ac.

N 1/2 Buckhorn No. 1
10.3 Ac.



PLAT OF BUCKHORN TOWNSITE. BUCKHORN M.D. EUREKA COUNTY.

NEP.
Scale 80 ft. = 1 Inch.

Buckhorn No. 10 Lode
20.6 Ac.

I hereby certify that this plat is a true and correct copy of the original map and survey of the townsite of Buckhorn Eureka County Nev. the original having been certified to according to law by P. E. Johnson, said original plat and certificate being attached hereto for reference.

J. Garfield Smith
W. E.

Handwritten notes:
The...
owners
approved by the Board of County Commissioners of Eureka County, Nevada, this 4th day of October, A.D. 1909.
D. M. ...
Chairman

Files are recorded in the request of R. T. Charles
Book 7 of Eureka's Page 187.
1909 at 2:10 P.M.
Recorder