

OWNERS CERTIFICATE:

Know all men by these presents, that the undersigned are all of the parties having any record title interest in the land shown on this map; that we do hereby consent to the preparation and filing of this map, that we do hereby offer without reservation for such purposes, all of the areas delineated for such purposes on this map and we do further offer for dedication with our reservation for public utility purposes all of those areas and strips of land designated on this map for public utility purposes, that this certificate is made pursuant to section 278.420 Nevada Revised Statutes. In witness whereof we have here to set our hands this day of November 1960.

NEVELCO INC.

Philip K. Heavner
Richard C. Allen
 Vice President
 Vice President

STATE OF CALIFORNIA } ss.
 COUNTY OF LOS ANGELES }

Personally appeared before me this 22nd day of November 1960 *Philip K. Heavner* and *Richard C. Allen* personally known to me to be the officers of the corporation that executed the foregoing and acknowledged to me that the signatures were made by the officers of said corporation and that they have executed the same freely and voluntarily for the uses and purposes therein mentioned.

May L. Nevada
 PUBLIC

SURVEYOR'S CERTIFICATE:

The undersigned certifies that he is the surveyor responsible for this map, that the survey of said property was completed on the 20th day of October 1960; that the survey was made under his direction; that the survey is true and complete as shown; and that the monuments are of the character and occupy the position indicated or that they will be set in such position and of such time as is agreed pursuant to provision of N.R.S. 278.400.

Dated this 22nd day of November 1960. *W. H. Settlemeyer*

APPROVAL:

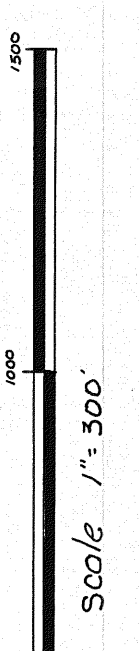
At a regular meeting of the Board of County Commissioners of the County of Evreka, State of Nevada, held on the 5th day of December, 1960, the above map was duly and regularly approved and the streets therein are accepted as dedicated.

ATTEST: *William W. Holladay*
 CLERK OF THE BOARD OF COUNTY COMMISSIONERS

NOTES:
 Roadways will contain drainage and utility easements.
 Basis of Bearings - G.L.O. Plots.
 © Monuments.

FILE No. 35161 Filed at request of W.H. Settlemeyer on the 5th day of December 1960 at 3:00 o'clock P.M.

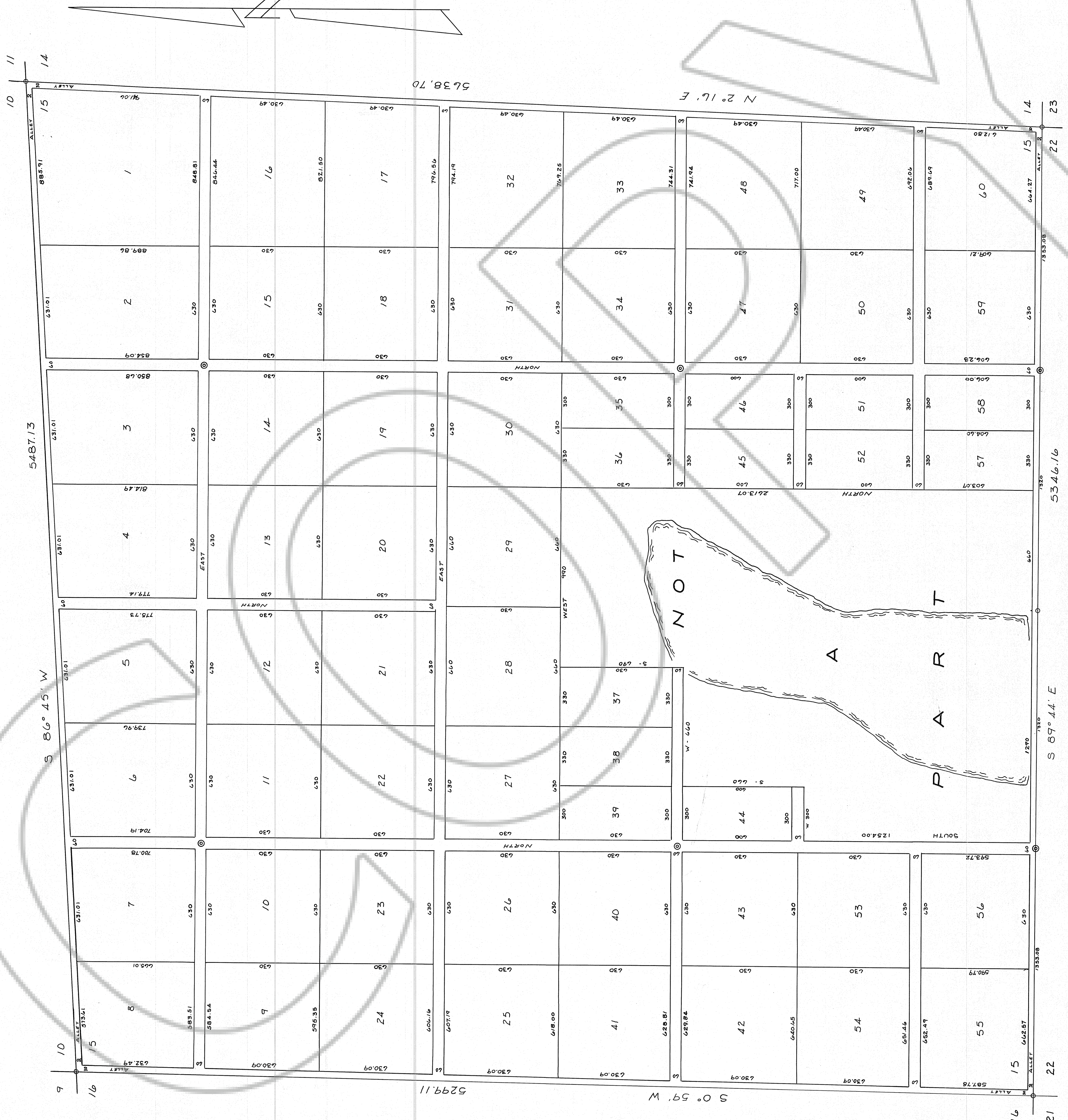
W. H. Settlemeyer
 County Recorder



SECTION 15, T 29 N, R 48 E, MD. 81 M.
BY NEVELCO INC.

PREPARED BY
 SETTELMAYER & CHILTON, ENGINEERS
 ELKO, NEVADA

NOV. 1960



DRAWING NUMBER

DRAWING NUMBER

DRAWING NUMBER
 35161

DRAWING NUMBER
Nevelco