

# Certificate of Location <sup>LODE</sup> CLAIMS

This is to Certify, That <sup>10</sup> mining claim<sup>s</sup> named the Curlew 1 thru Curlew 4, Curlew 8 thru Curlew 10, Curlew 15 and 16, and Curlew 20 were located by Charles Damele Sr., Charles Damele Jr., Ronald D. Damele, Stephen Damele, and Jack O'Connor

(except Curlew 20 which was located October 7, 1966) on the third day of October 1966, situated in Unknown District, Eureka County, State of Nevada,

~~mining~~ The 10 claims are located at distances varying from 6 1/2 mi. to 8 mi. westerly from the J.D. Ranch. (see accompanying sketch). Location notices on location posts show approximate distances westerly from the J.D. Ranch, Eureka County, Nevada.

Locators Address: J.D. Ranch, Carlin, Nevada

(Refer to some natural object or permanent monument)

They claim 1500 per claim linear feet along the course of mineral bearing ledge<sup>s</sup>, lode<sup>s</sup> or vein<sup>s</sup> extending as shown on the sketch

~~mining~~ ~~claims~~, together with 300 feet on each side of the center of the ledge<sup>s</sup> for the entire length of the claim<sup>s</sup>.

The discovery work consists of access road, drill site excavations, and drill holes as shown on the sketch.

monument and its dimensions are X feet long and X feet wide, X feet high, X feet deep, exposing ledge, lode or vein in place.

The northwest corner <sup>s are</sup> marked by posts 3 1/2 feet high, inscribed "N. W. corner of corresponding claim,"; the southwest corner <sup>s are</sup> marked by posts 3 1/2 feet high, inscribed "S. W. corner of corresponding claim;"; the southeast corner <sup>s are</sup> marked by posts 3 1/2 feet high, inscribed "S. E. corner of corresponding claim"; the northeast corner <sup>s are</sup> marked by posts 3 1/2 feet high, inscribed "N. E. corner of corresponding claim." There is also a post 3 1/2 feet high at

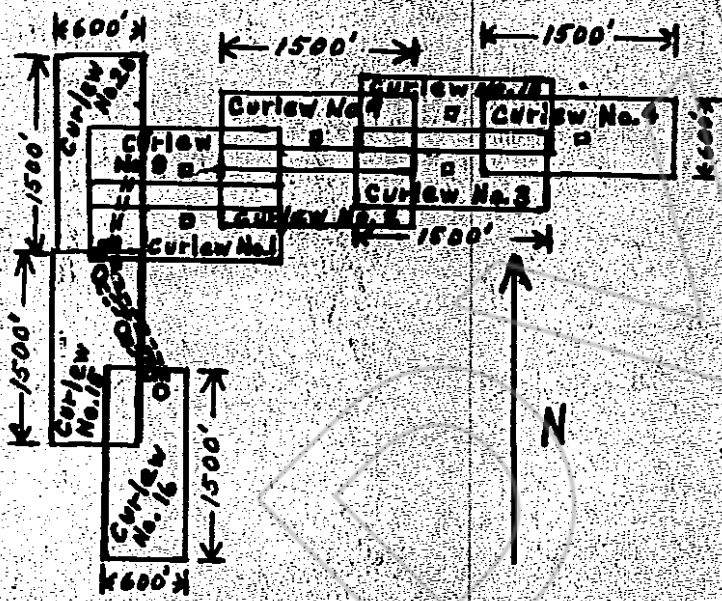
the center of each side line. The discovery work has been done and the location completed since

Oct. 25 1966

Bull-dozer work and drilling  
Cost over \$1,000.00

Dated Nov. 3 1966

James A. Magland  
P.O. Box 645  
Carlin, Nevada



Charles Damele Sr., Charles Damele Jr., Stephen Damele,  
and Jack O'Connor; Locators

10' Lode Claims

Curlew Nos. 1, 2, 3, 4, 8, 9, 10, 15, 16, and 20.

Explanation

- Location Monument
- Drill Hole
- 〰 Access Road

File No. 42991  
 RECORDED AT THE REQUEST OF  
James A. Hoagland  
 November 3 A. D. 1966  
 at 10 minutes past 10 A. M.  
 in Book 13 of OFFICIAL RECORDS  
 Page 98-99 Records of  
 WYOMING COUNTY, NEVADA  
*Melba A. McPart*  
 Recorder  
 Fee \$10.00

# Certificate of Location LODE CLAIMS

This Is to Certify, That mining claim<sup>s</sup> named the Curlew 5 thru Curlew 7 and Curlew 11 thru Curlew 14 were located by Charles Damele Sr., Charles Damele Jr., Ronald D. Damele, Stephen Damele, and Jack O'Connor

on the third day of October 1966, situated in unknown District, Eureka County, State of Nevada, ~~which~~ The 7 claims are located at distances

varying from 6 $\frac{3}{4}$  mi. to 7 $\frac{1}{4}$  mi. westerly from the JD Ranch. (See accompanying sketch). Location Notices on location posts show approximate distances westerly from the JD Ranch, Eureka County, Nevada.

Locators Address: JD Ranch, Carlin, Nevada

(Refer to some natural object or permanent monument)

They claim 1500 per claim linear feet, along the course of mineral bearing ledge<sup>s</sup>, lode<sup>s</sup> or vein<sup>s</sup>, extending as shown on the sketch,

feet together with 300 feet on each side of the center<sup>s</sup> of the ledge<sup>s</sup> for the entire length of the claim<sup>s</sup>.

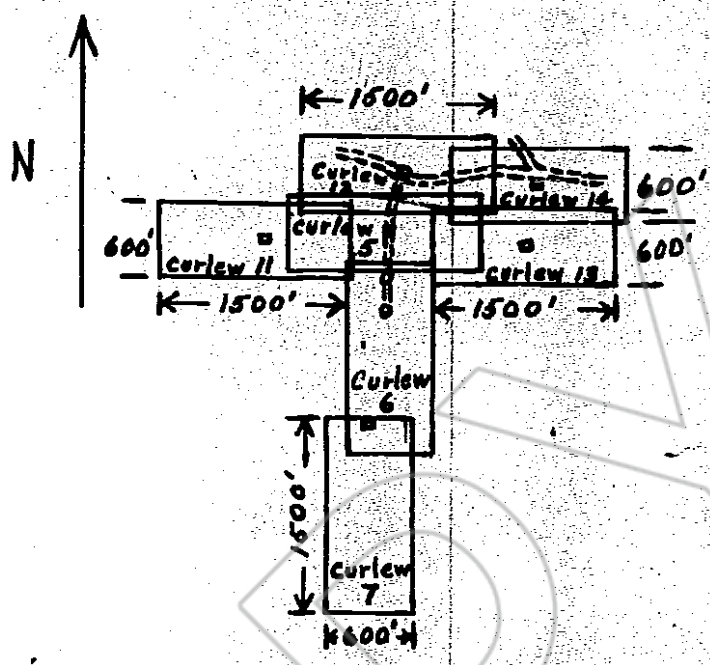
The discovery work consists of access road, drill site excavations, and Drill holes as shown on the sketch. (Shaft, cut or tunnel)

monument and its dimensions are X feet wide, X feet high, X feet long and X feet deep, exposing ledge, lode or vein in place.

The northwest corner are marked by posts 3 $\frac{1}{2}$  feet high, inscribed "N. W. corner of corresponding claim; are"; the southwest corner are marked by posts 3 $\frac{1}{2}$  feet high, inscribed "S. W. corner of corresponding claim; are"; the southeast corner are marked by posts 3 $\frac{1}{2}$  feet high, inscribed "S. E. corner of corresponding claim; are"; the northeast corner are marked by posts 3 $\frac{1}{2}$  feet high, inscribed "N. E. corner of corresponding claim. are There is also a post 3 $\frac{1}{2}$  feet high at

the center of each side line. The discovery work has been done and the location completed since Oct. 25 1966. Bull-dozer work and drilling  
Dated Nov. 3 1966. Cost over \$700.00

James A. Honford  
PO Box 645  
Carlin, Nevada



Charles Damele Sr., Charles Damele Jr.,  
 Ronald D. Damele, Stephen Damele,  
 and Jack O'Connor; Locators  
 7 Lode Claims  
 Curlew Nos. 5, 6, 7, 11, 12, 13, and 14  
 Explanation  
 ■ Location Monument  
 ○ Drill Hole  
 --- Access Road

File No. 42992  
 RECORDED AT THE REQUEST OF  
 James Hoagland  
 November 3 A. D. 19 66  
 at 11 minutes past 10 A. M.  
 in Book 13 of OFFICIAL RECORDS  
 Page 100-101 Records of  
 FUREKA COUNTY, NEVADA  
 Kelly A. O'Connell  
 Recorder Fee \$ 7.00

# Certificate of Location LODE CLAIMS

This Is to Certify, That <sup>6</sup>mining claim<sup>s</sup> named the Curlew Nos. 17, 18, and 19; and Snowcap Nos. 2, 3, and 4 were located by Charles Damele Sr., Charles Damele Jr., Ronald D. Damele, Stephen Damele, and Jack O'Connor

Curlew Nos. 17, 18, and 19 on the 3rd day of October 1966, and Snowcap Nos. 2, 3, and 4 on the 10th of October 1966, situated in Unknown District, Eureka County, State of Nevada.

The 6 claims are located at distances varying from 6 to 6½ miles westerly from the JD Ranch (see accompanying sketch). Location notices on location posts show approximate distances westerly from the JD Ranch, Eureka County, Nevada.

Locators Address: JD Ranch, Carlin, Nevada

(Refer to some natural object or permanent monument)

They claim 1500 per claim linear feet, along the course of mineral bearing ledge, lode or vein, extending as shown on the sketch

300 feet on each side of the center of the ledge for the entire length of the claim<sup>s</sup>.

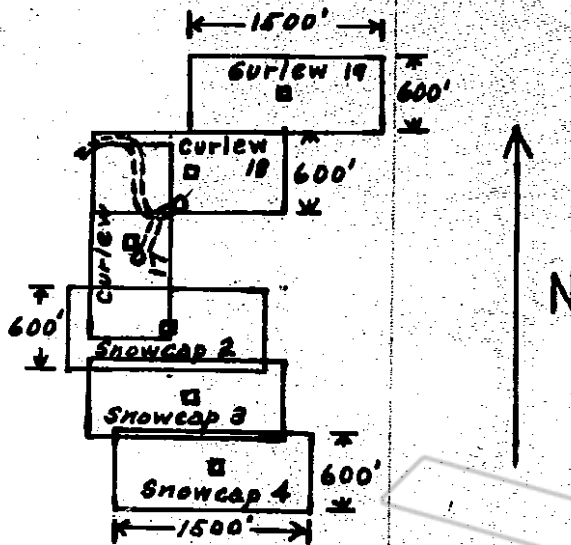
The discovery work consists of access road, drill site excavations, and drill holes as shown on the sketch.

exposing ledge, lode or vein in place.

The northwest corner <sup>are</sup> marked by posts 3½ feet high, inscribed "N. W. corner of corresponding claim"; the southwest corner <sup>are</sup> marked by posts 3½ feet high, inscribed "S. W. corner of corresponding claim"; the southeast corner <sup>are</sup> marked by posts 3½ feet high, inscribed "S. E. corner of corresponding claim"; the northeast corner <sup>are</sup> marked by posts 3½ feet high, inscribed "N. E. corner of corresponding claim;". There is also a post 3½ ft. high at the center of each side line.

The discovery work has been done and the location completed since October 25 1966. Bull-dozer work and drilling Cost over \$600.00  
Dated Nov. 3 1966

James H. England  
P.O. Box 645  
Carlin, Nevada



Charles Damele Sr, Charles Damele Jr,  
Ronald D. Damele, Stephen Damele,  
and Jack O'Connor; Locators

6 Lode Claims

Curlew Nos. 17, 18, and 19; and  
Snowcap Nos. 2, 3, and 4

Explanation

□ Location Monument

○ Drill Hole

⋈ Access Road

File No. 12403

RECORDED AT THE REQUEST OF  
James Hoagland

November 3 A. D. 19 66

at 12 minutes past 10 A. M.

in Book 13 of OFFICIAL RECORDS

Page 102-103 Records of

EUREKA COUNTY, NEVADA

Shelco - W. W. Paul

Recorder 6.00

Fee \$ 6.00

# Certificate of Location LODE CLAIMS

This Is to Certify, That <sup>6</sup> mining claim named the Golden 17, Golden 18, Golden 19, Golden 20, Golden 21, and Golden 22 were located by Charles Damele Sr., Charles Damele Jr., Ronald D. Damele, Stephen Damele and John O'Connor on the 7th day of Oct. 1966, except Golden No. 22 which was located on the 24th day of October 1966, situated in

Unknown District, Eureka County, State of Nevada.

~~The 6 claims~~ The 6 claims are located at distances approximately one mile easterly from Coal Canyon. (see accompanying sketch). Location notices on location posts show approximate distances easterly from Coal Canyon, Eureka County, Nevada. Locator's Address: JD Ranch, Carlin, Nevada

(Refer to some natural object or permanent monument) They claim 1500 <sup>per claim</sup> linear feet along the course of mineral bearing ledge, lode or vein, extending as shown on the sketch

~~together with~~ 300 feet on each side of the center of the ledge for the entire length of the claims.

The discovery work consists of drill holes as shown on the sketch.

~~exposing ledge, lode or vein in place.~~

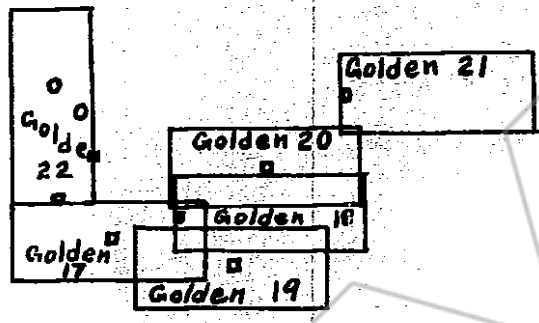
The northwest corner <sup>are</sup> marked by posts 3 1/2 feet high, inscribed "N. W. corner of corresponding claim; ~~the~~"; the southwest corner <sup>are</sup> marked by posts 3 1/2 feet high, inscribed "S. W. corner of corresponding claim; ~~the~~"; the southeast corner <sup>are</sup> marked by posts 3 1/2 feet high, inscribed "S. E. corner of corresponding claim; ~~the~~"; the northeast corner <sup>are</sup> marked by posts 3 1/2 feet high, inscribed "N. E. corner of corresponding claim; ~~the~~"

There is also a post 3 1/2 ft. high at the center of each side line. The discovery work has been done and the location completed since

Oct. 29, 1966 19 Drilling Cost over \$600.00

Dated Nov. 3, 1966 19

James R. Knappard  
P.O. Box 645  
Carlin, Nevada



Charles Damele Sr., Charles Damele Jr.,  
 Ronald D. Damele, Stephen Damele,  
 and Jack O'Connor; Locators  
 6 Lode claims  
 Golden Nos. 17, 18, 19, 20, 21, and 22  
 Explanation  
 □ Location Monument  
 ○ Drill Hole

File No. 42991  
 RECORDED AT THE REQUEST OF  
James Hoagland  
 November 3 A.D. 1966  
 at 13 minutes past 10 A.M.  
 in Book 13 of OFFICIAL RECORDS  
 Page 104-105 Records of  
 EUREKA COUNTY, NEVADA  
Willie A. Miller  
 Recorder Fee \$ 6.00