

BIG JOHN 5

BIG JOHN #4

BIG JOHN #3

BIG JOHN 4

BIG JOHN 6

60' OVERLAP  
B AND B # 3

B AND B # 1

B AND B # 2

BIG JOHN # 8

BIG JOHN 7

BIG JOHN # 9

150' OVERLAP  
M AND N # 1

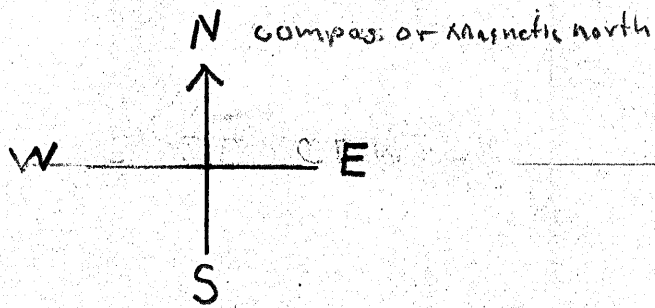
STAR # 2

STAR

STAR

STAR 3

34° from AZ # 8AA  
3 miles  
175°  
TO Eagles Roost



0° Magnetic Scale 1 inch = 500 feet.

Diamond Hills District

90° to 270°

Eureka Nevada

180°

STAR 4

BIG JOHN # 10

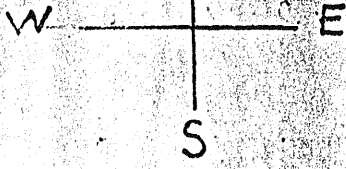
Filed  
RECORDED AT THE REQUEST OF Gary L. Baird  
on Aug. 30, 1971, at 30 mins. past 8 A. M. in  
EUREKA COUNTY, NEVADA. *Jillie C. Walker* Recorder.  
File No. 54929  
Fee \$ 1.80.00

BERCH CLAIMS GROUP

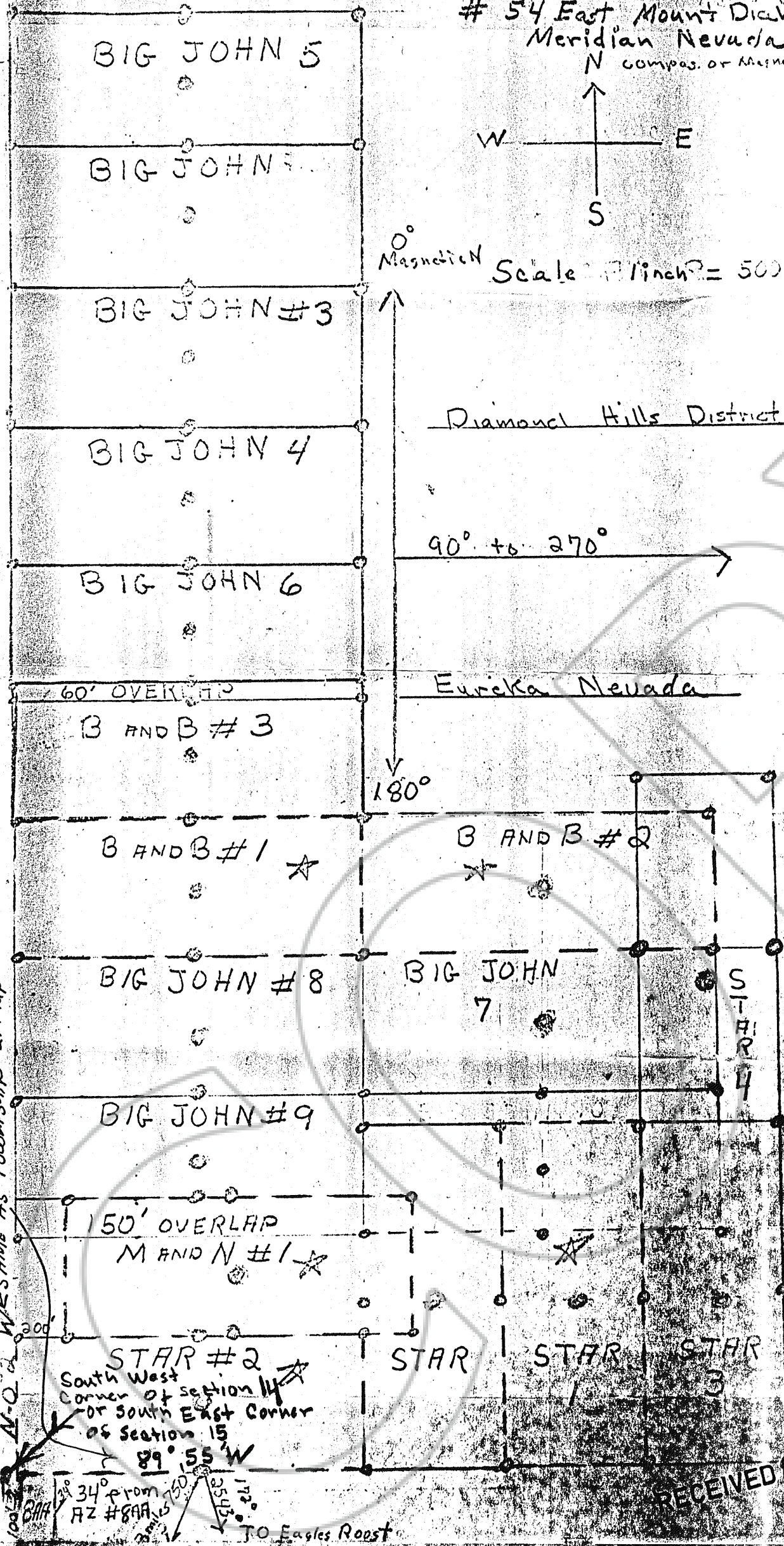
Located by Gary L. Baird (wholesale unaffiliated)

ROOSTS

Township #21 North Range  
# 54 East Mount Diablo  
Meridian Nevada In section 14  
N compass or magnetic north



Magnetic Scale 1 inch = 500 feet.



BIRCH LUMBS GROUP  
Located by Gary L. BAYNE

WE SAME AS TOWNSHIP 21 MAP

STAR #2  
South West  
Corner of section 14  
or South East Corner  
of section 15  
89° 55' W

34° from  
RZ #89A  
TO Eagles Roost

RECEIVED APR 19 1972