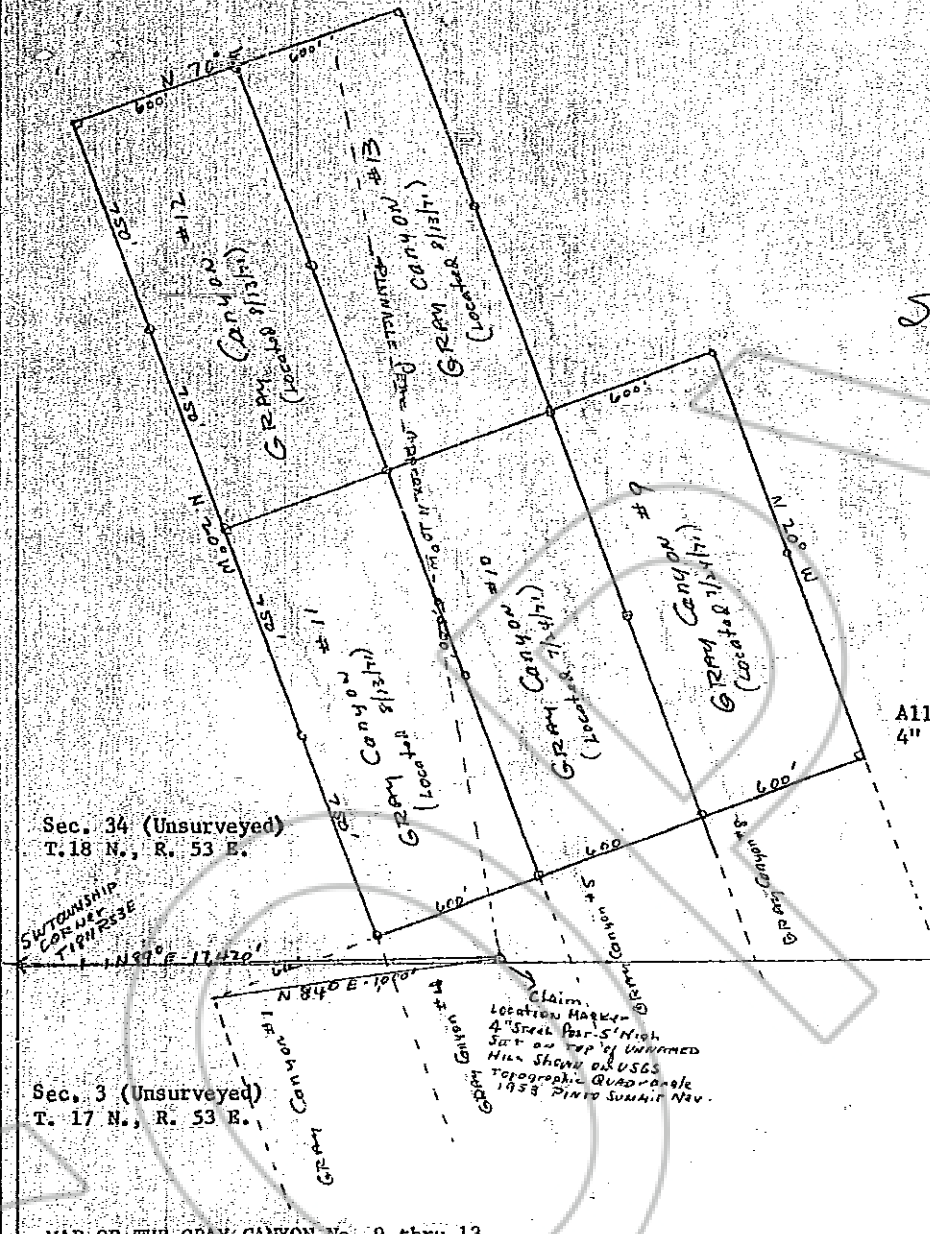


Scale 1" = 500'



All Claim Corners are 4" x 4" wooden posts

Sec. 34 (Unsurveyed)  
T. 18 N., R. 53 E.

SW TOWNSHIP CORNER  
T. 17 N. R. 53 E.

Sec. 3 (Unsurveyed)  
T. 17 N., R. 53 E.

MAP OF THE GRAY CANYON No. 9 thru 13  
GROUP OF LODE CLAIMS, UNKNOWN MINING  
DISTRICT, EUREKA COUNTY, NEVADA.

LOCATED BY: Willis A. DePaoli  
P.O. Box 261  
Eureka, Nevada 89316  
and  
John V. Damaie  
P.O. Box 295  
Eureka, Nevada 89316

(The claim location marker is a 4" Dia. Steel post set on top of an unnamed hill as shown on the 1953 edition of the Pinto Summit, Nev. topographic quadrangle published by the U.S. Geological Survey. The bearing and distance from the SW corner of T. 18 N., R. 53 E., is N. 89° E., 17,420').

RECORDED AT THE REQUEST OF  
Willis A. DePaoli  
on October 15, 1971  
at 02 mins. past 8 A.M.  
In Book 40 of OFFICIAL  
RECORDS, page 524  
OF EUREKA COUNTY, NEVADA  
Willis A. DePaoli  
Records  
\$51.57 Fee \$ 75.00