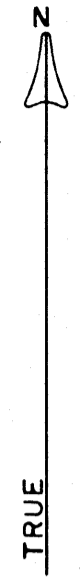
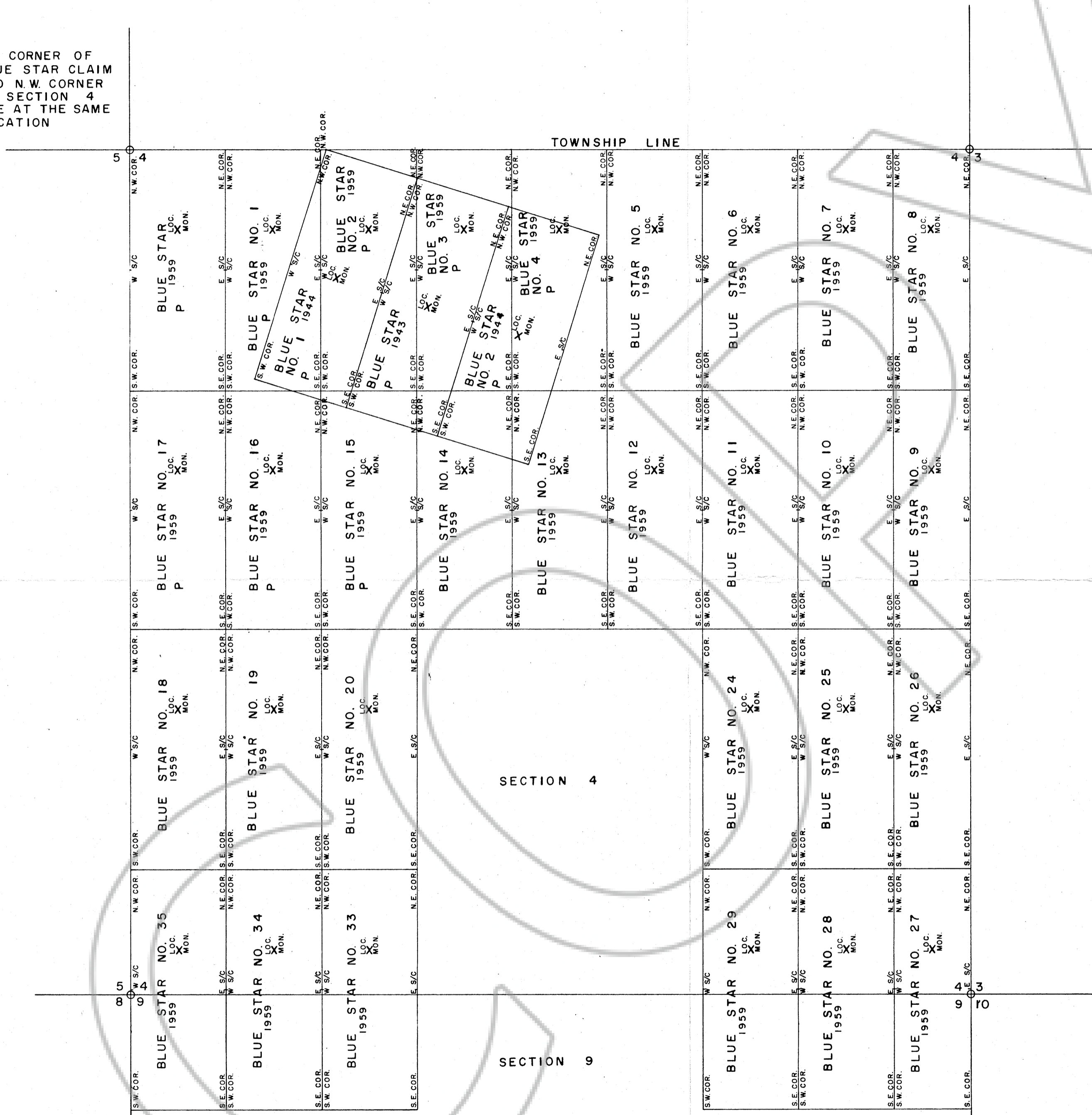


N.W. CORNER OF  
BLUE STAR CLAIM  
AND N.W. CORNER  
OF SECTION 4  
ARE AT THE SAME  
LOCATION



SECTION 4

SECTION 9

CARLIN GOLD MINING CO.  
EUREKA COUNTY, NEVADA

SECTION 4 & 9 BLUE STAR GROUP  
(LODE)  
T 35 N P = PATENTED  
R 50 E  
MDB & M SCALE 1" = 500'

Filed  
at the request of  
Carlin Gold Mining Co.  
on August 16, 1977  
at 05 mins. past 11 A.M.  
in Book \_\_\_\_\_ OFICIAL  
RECORDS  
OF EUREKA COUNTY, NEVADA  
Recorder  
File No. 56155 Page 300