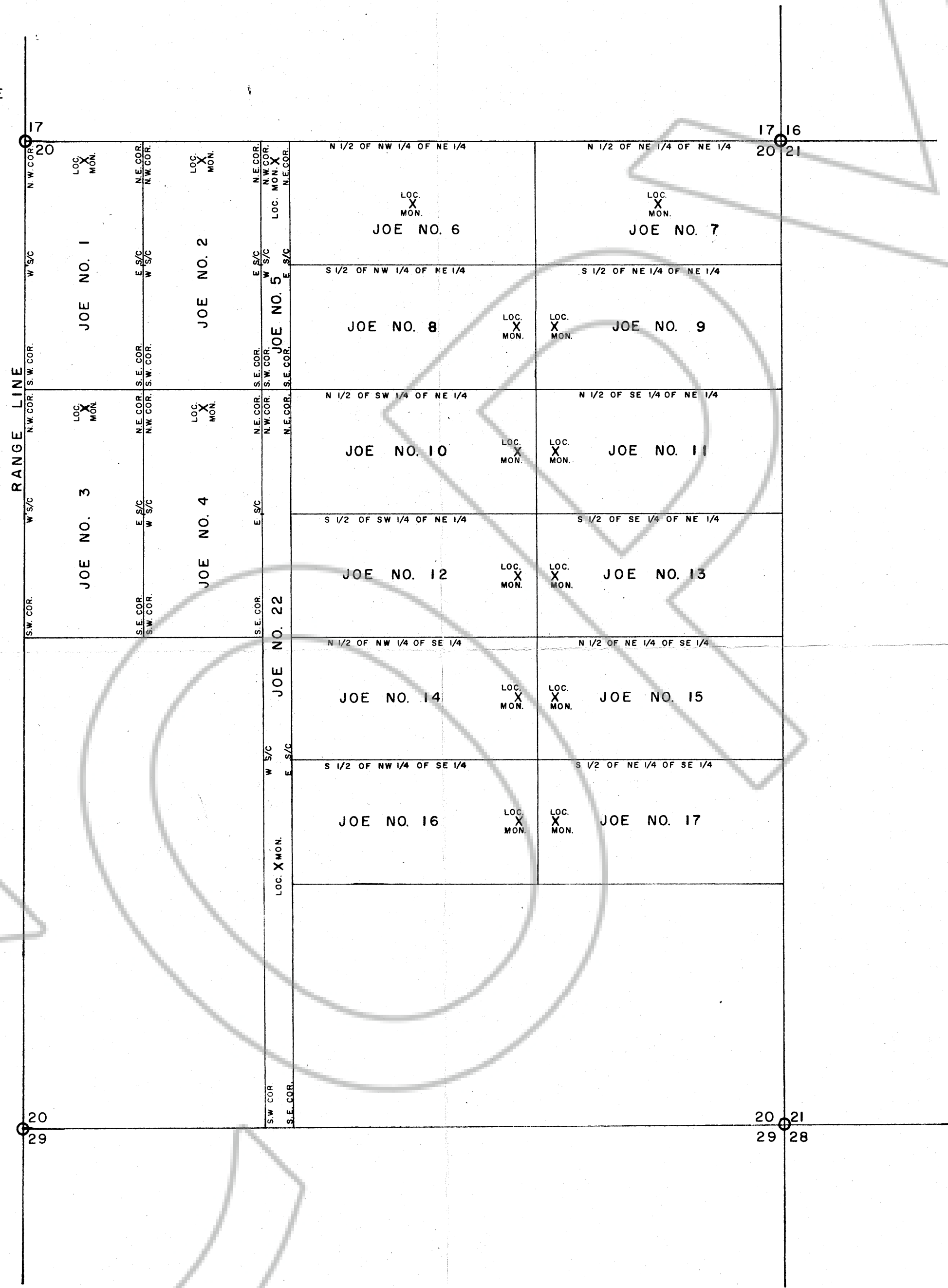


N.W. CORNER OF
JOE NO. 1 CLAIM
AND N.W. CORNER
OF SECTION 20
ARE AT THE SAME
LOCATION



Filed
RECORDED AT THE REQUEST OF
Carlin Gold Mining Co
on August 16, 1972
at 05 mins. past 11 A. M.
of OFFICIAL
RECORDS, page _____ RECORDS
OF EUREKA COUNTY, NEVADA
Recorder *William H. McPherson*
File No. 56157 Fee \$ 3.00

CARLIN GOLD MINING CO.
EUREKA COUNTY, NEVADA

SECTION 20 JOE GROUP
(PLACER)
T 35 N P = PATENTED
R 50 E
MDB & M SCALE 1" = 500'