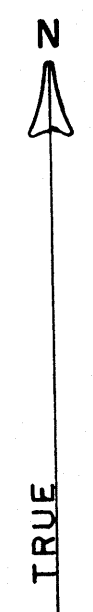
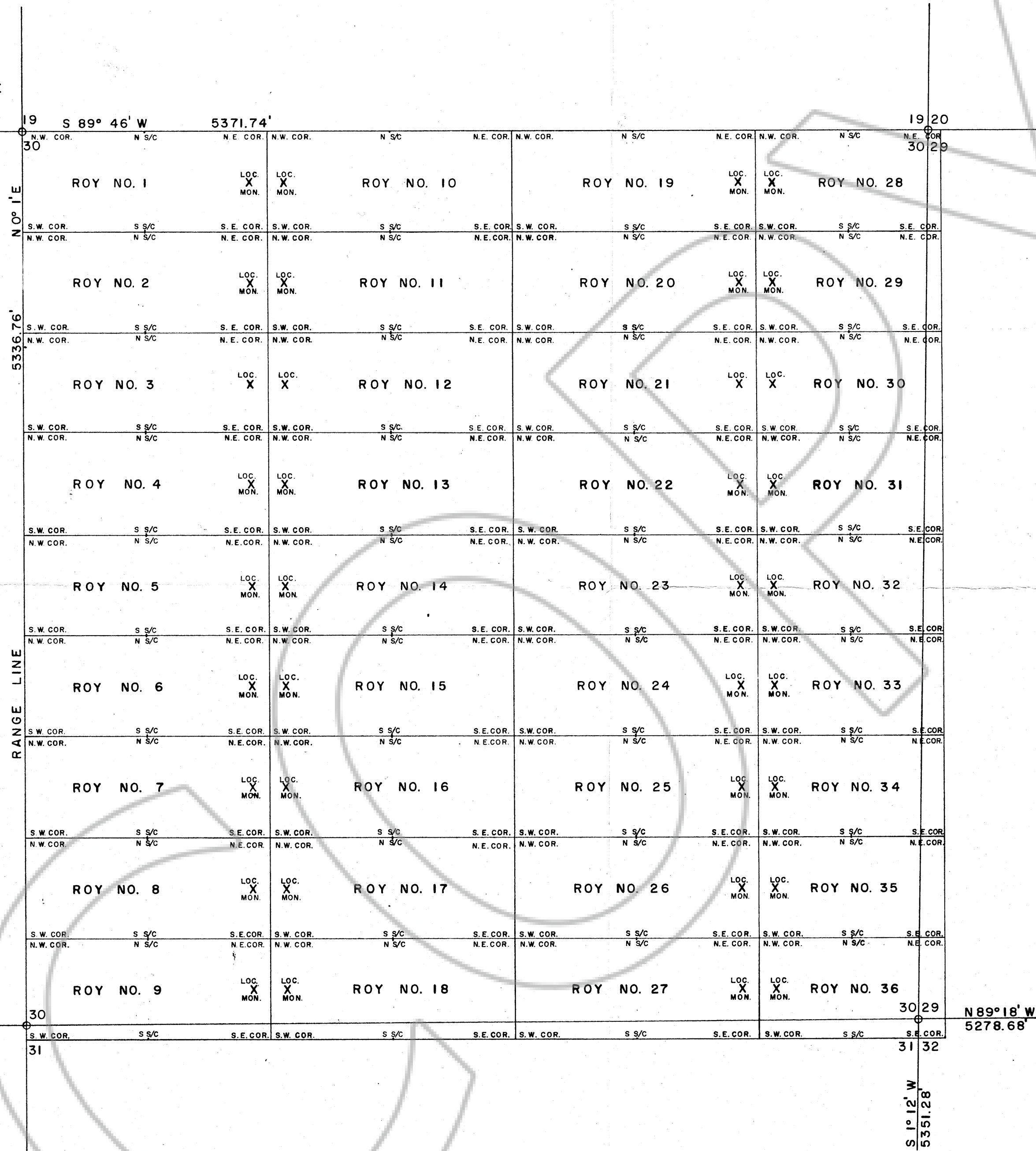


N.W. CORNER OF ROY NO. 1 CLAIM AND N.W. CORNER OF SECTION 30 ARE AT THE SAME LOCATION



Filed
 RECORDED AT THE REQUEST OF
 CARLIN GOLD MINING CO.
 on August 16, 1972
 at 25 mins. past 11 A. M.
 RECORDS
 OF EUREKA COUNTY, NEVADA
 56161

CARLIN GOLD MINING CO.
 EUREKA COUNTY, NEVADA

SECTION 30 ROY GROUP
 (LODE)
 T 35 N P = PATENTED
 R 51 E
 MDB & M SCALE 1" = 500'