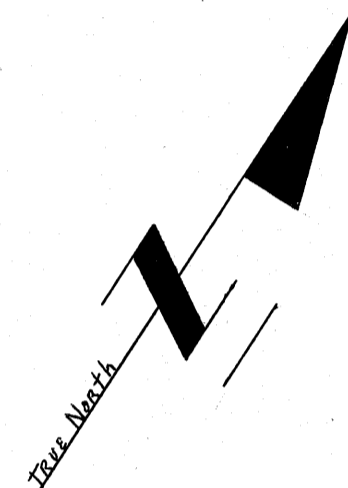
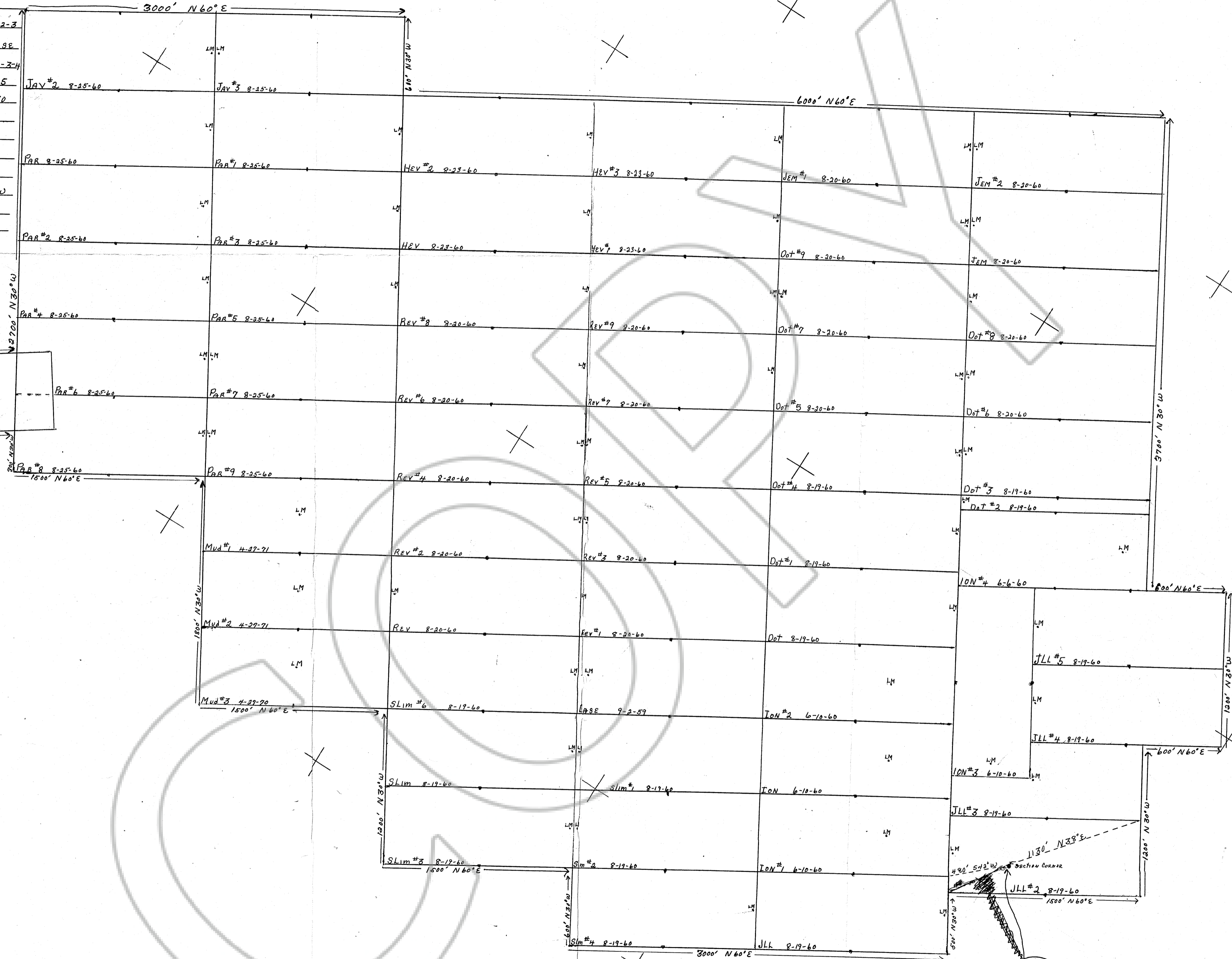
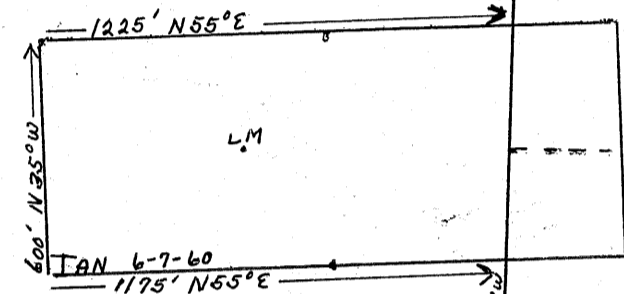


Map of Lode Claims

TAN-JAV#2-3-PAR-PAR#1-2-3-4-5-6-7-8-9-MUD#1-2-3  
 HEV-HEV#1-2-3-REV-REV#1-2-3-4-5-6-7-8-9-PASS  
 SLIM-SLIM#1-2-3-4-6-JEM-JEM#1-2-DOT-DOT#1-2-3-4-5  
 TION R53E Sec 24-25-26-27-28 R53E Sec 19-20  
 UNKNOWN DISTRICT - EUREKA COUNTY  
 MAYNARD & LESTER BISONI - EUREKA, NEVADA  
 DATE LOCATED NOTED INSIDE CLAIM  
 SCALE 1 inch = 500' BEARINGS FROM TRUE NORTH  
 N E CORNER JLL IS 480' FROM NW CORNER OF SEC 30 S 42' W  
 NW CORNER OF SEC 30 TO NE CORNER JLL IS 1130' N 38' E  
 X MARKS DIRECTION COORDINATES



FILED AT THE REQUEST OF  
 CLAUDE NALL  
 on AUGUST 17 1972  
 at 4:55 mins past 2 P. M.  
 Recorder of OFFICIAL  
 RECORDS OF EUREKA COUNTY, NEVADA  
 Recorder 56168  
 File No. 56168

