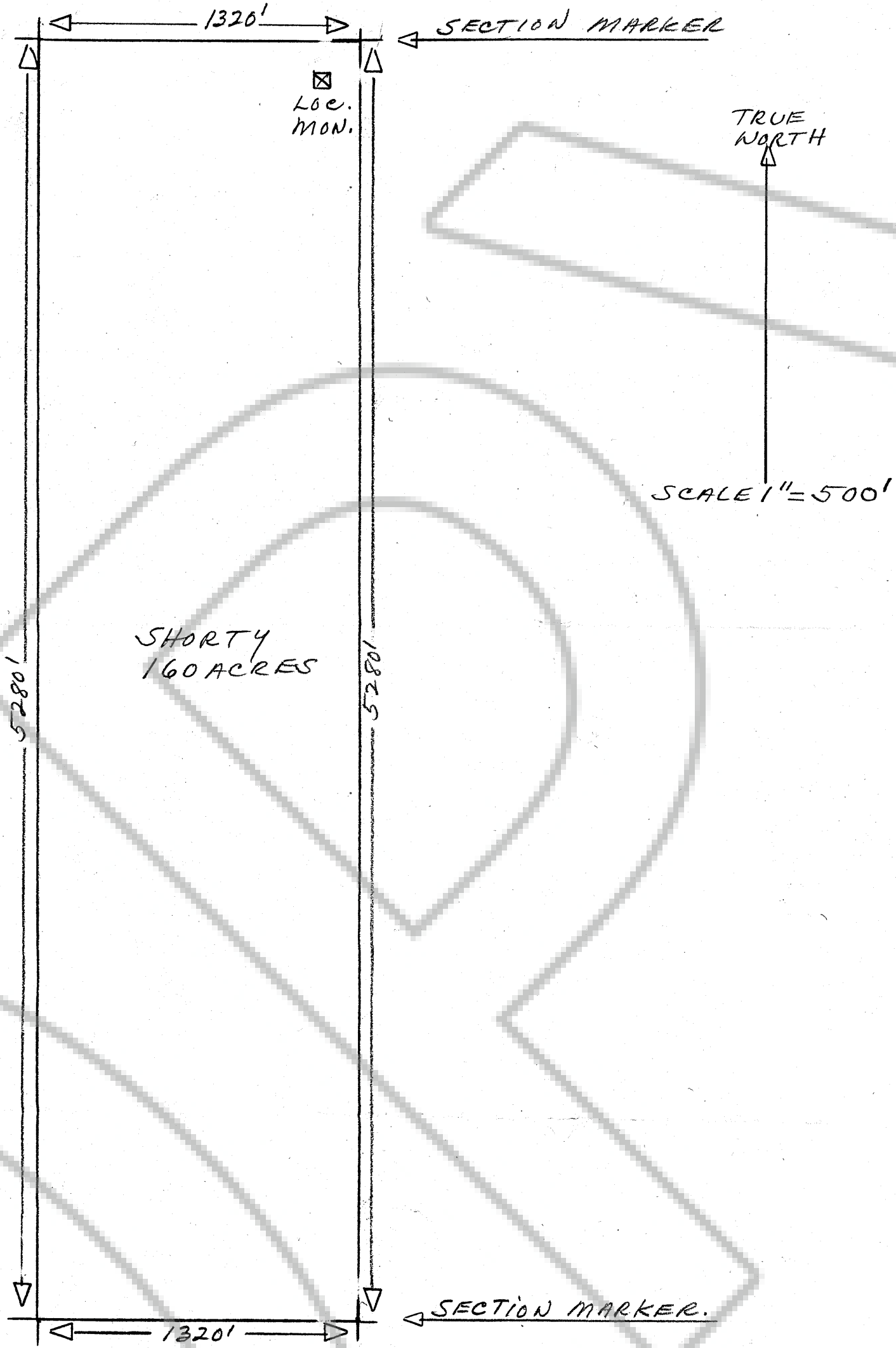


SECTION-6, T30N, R49E.



MAP OF THE SHORTY PLACER CLAIM.
 BULLION MINING DISTRICT, EUREKA COUNTY, NEV.
 LOCATED:- MAY, 31ST, 1970
 BY:- L.C. CARTER
 P.O. BOX 58
 BEOWAWE, NEVADA.
 SECTION-6, T30N, R49E.
 FRENCHIE CREEK, QUADRANGLE (1957)
 AND
 BEOWAWE, QUADRANGLE (1957)

Filed
 RECORDED AT THE REQUEST OF
 MAE SAWACEK
 on AUG 22 1972
 of 00 mins past 11 A M.
 in Book of NEVADA
 RECORDS
 OF EUREKA COUNTY, NEVADA
 Recorder
 Willis A. McLaughlin
 The No. 56213.300