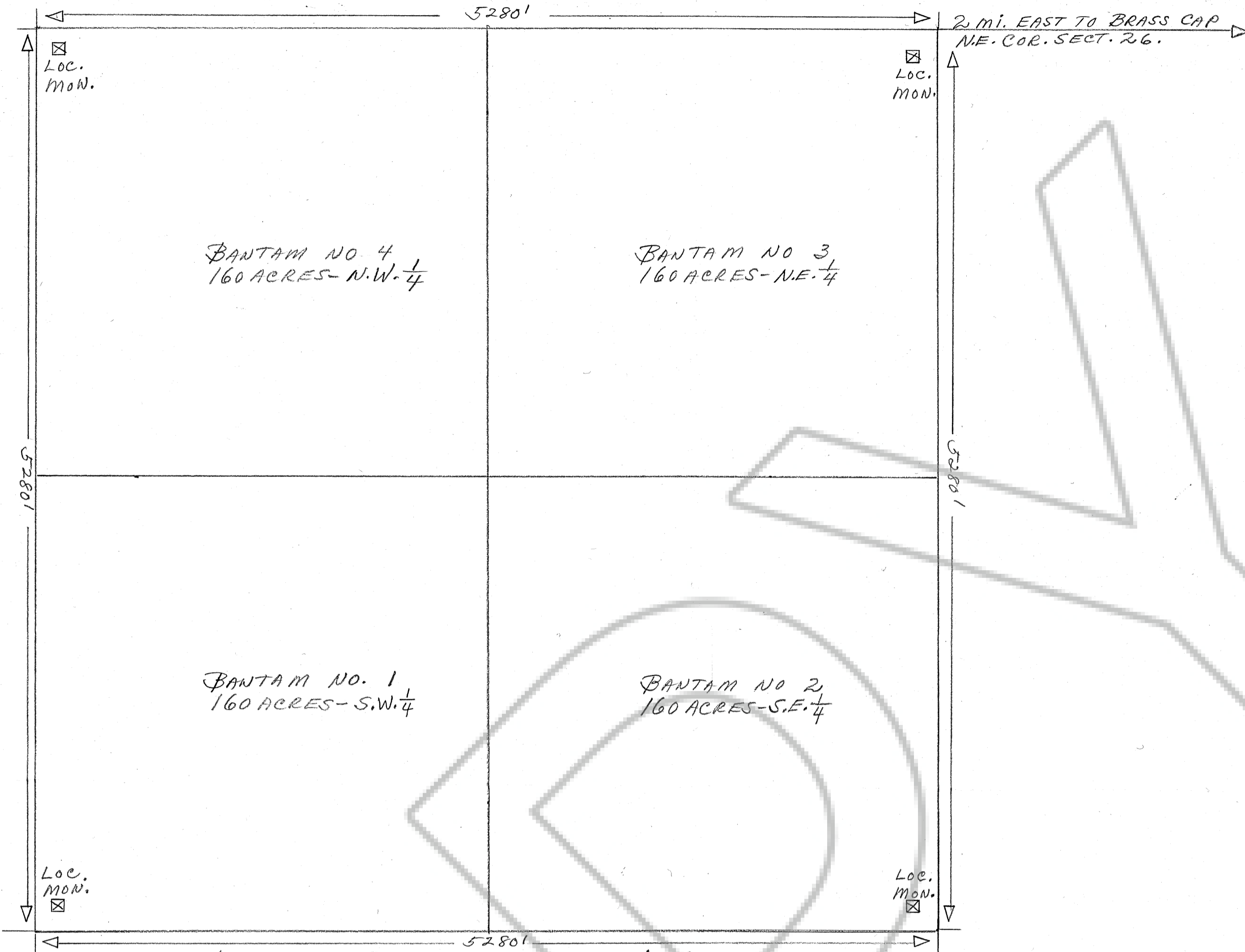


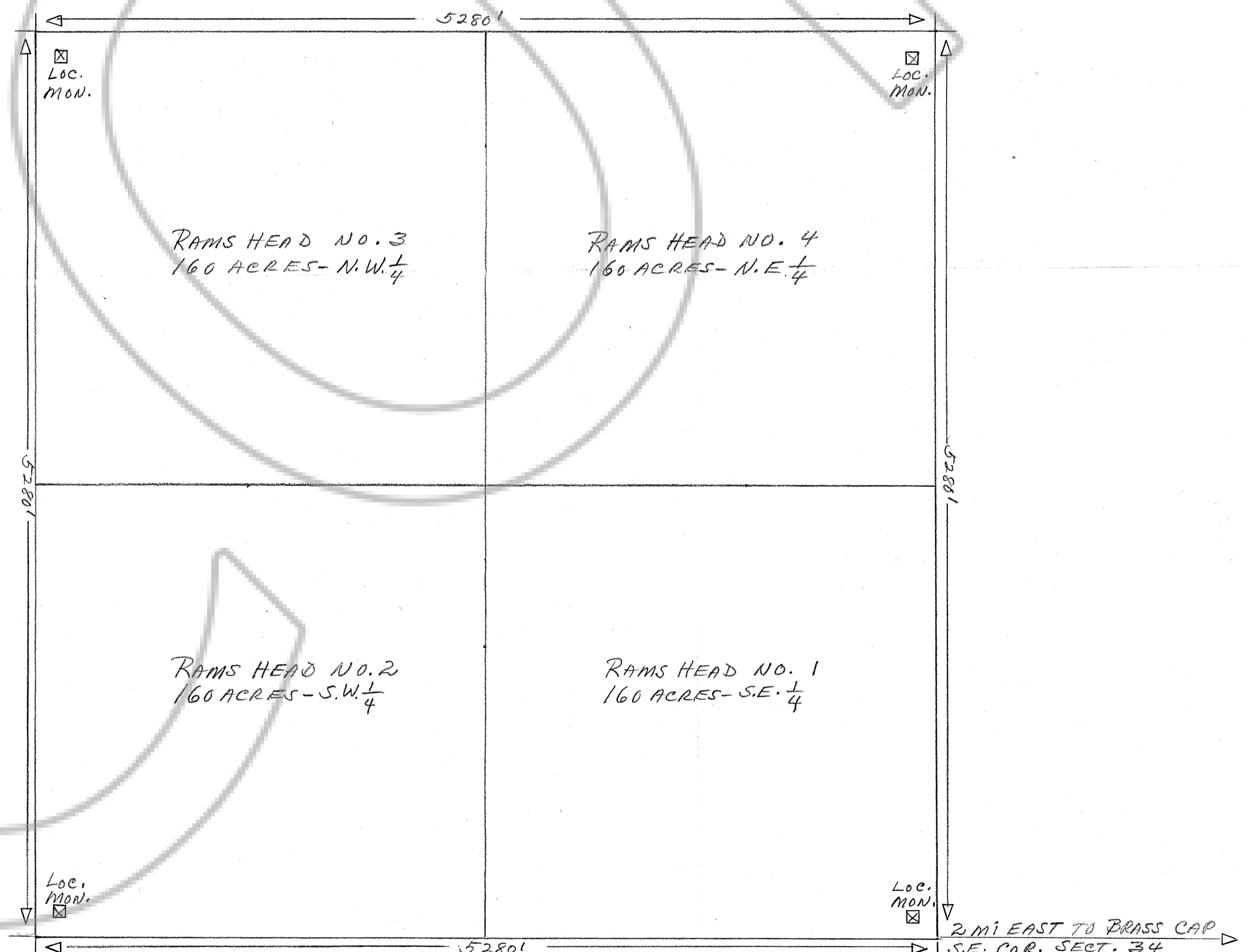
SECTION-28, T31N, R48E

TRUE NORTH  
SCALE 1" = 500'



MAP OF THE BANTAM PLACER CLAIM GROUP.  
BULLION MINING DISTRICT, EUREKA COUNTY, NEV.  
LOCATED:- THE BANTAM NO. 1, 2, 3 AND 4, MAY 22ND, 1970.  
BY:- L. C. CARTER  
P.O. Box 58  
BEOWAWE, NEVADA.  
SECTION-28, T31N, R48E.  
DUNPHY QUADRANGLE, NEVADA 1957

SECTION-32, T31N, R48E.



MAP OF THE RAMS HEAD PLACER CLAIM GROUP.  
BULLION MINING DISTRICT, EUREKA COUNTY, NEV.  
LOCATED:- THE RAMS HEAD NO. 1, 2, 3, AND 4, FEB. 20TH, 1970.  
BY:- L. C. CARTER  
P.O. Box 58  
BEOWAWE, NEVADA.  
SECTION-32, T31N, R48E.  
DUNPHY QUADRANGLE, NEVADA 1957.

Filed  
AT THE REQUEST OF  
L. C. CARTER  
ON August 22, 1972  
at 9:00 a.m. per L. C. M.  
RECORDED BY OFFICIAL  
RECORDS  
OF EUREKA COUNTY, NEVADA  
L. C. M.  
Recorder  
File No. 36218 Fee \$ 3.00