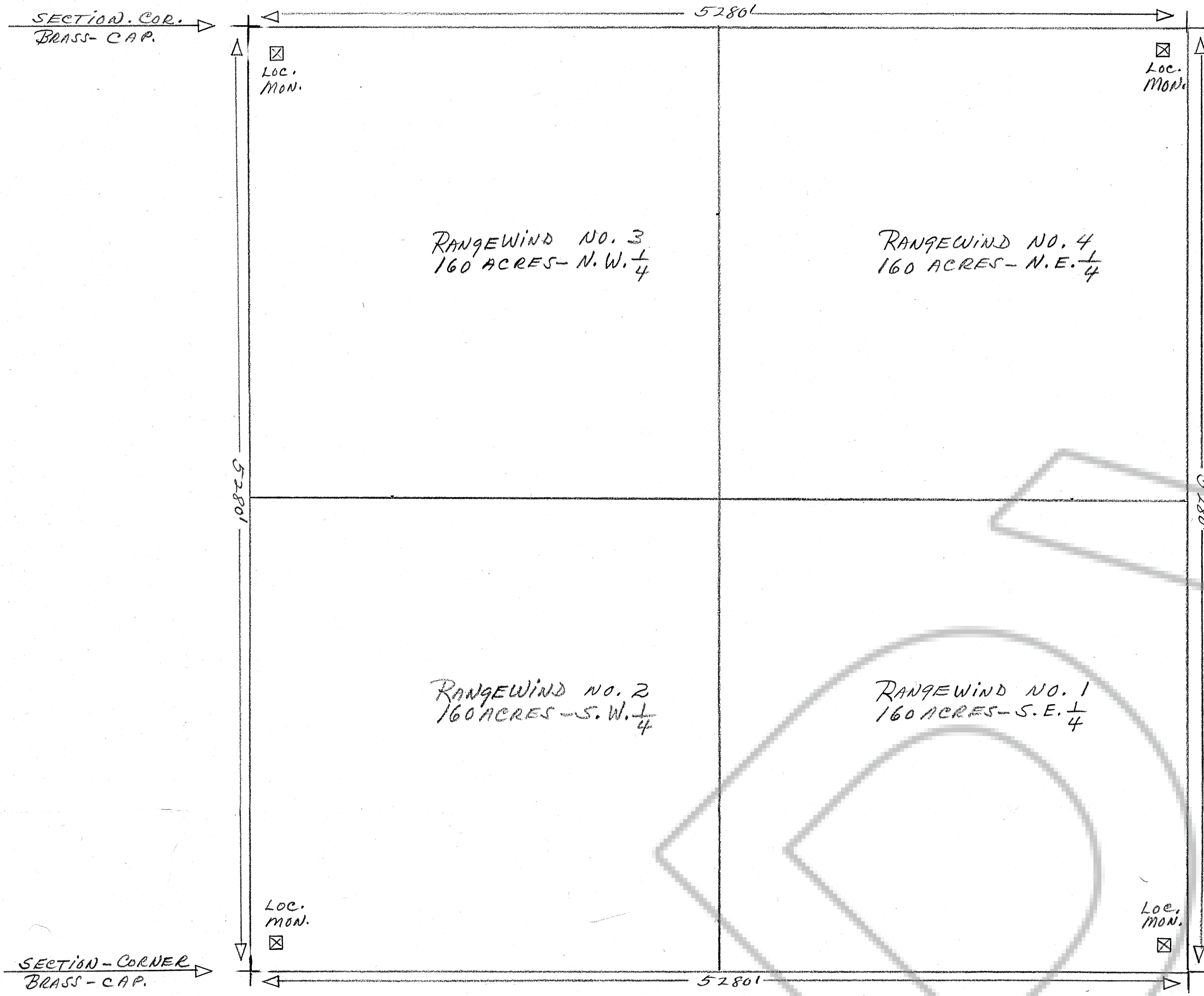
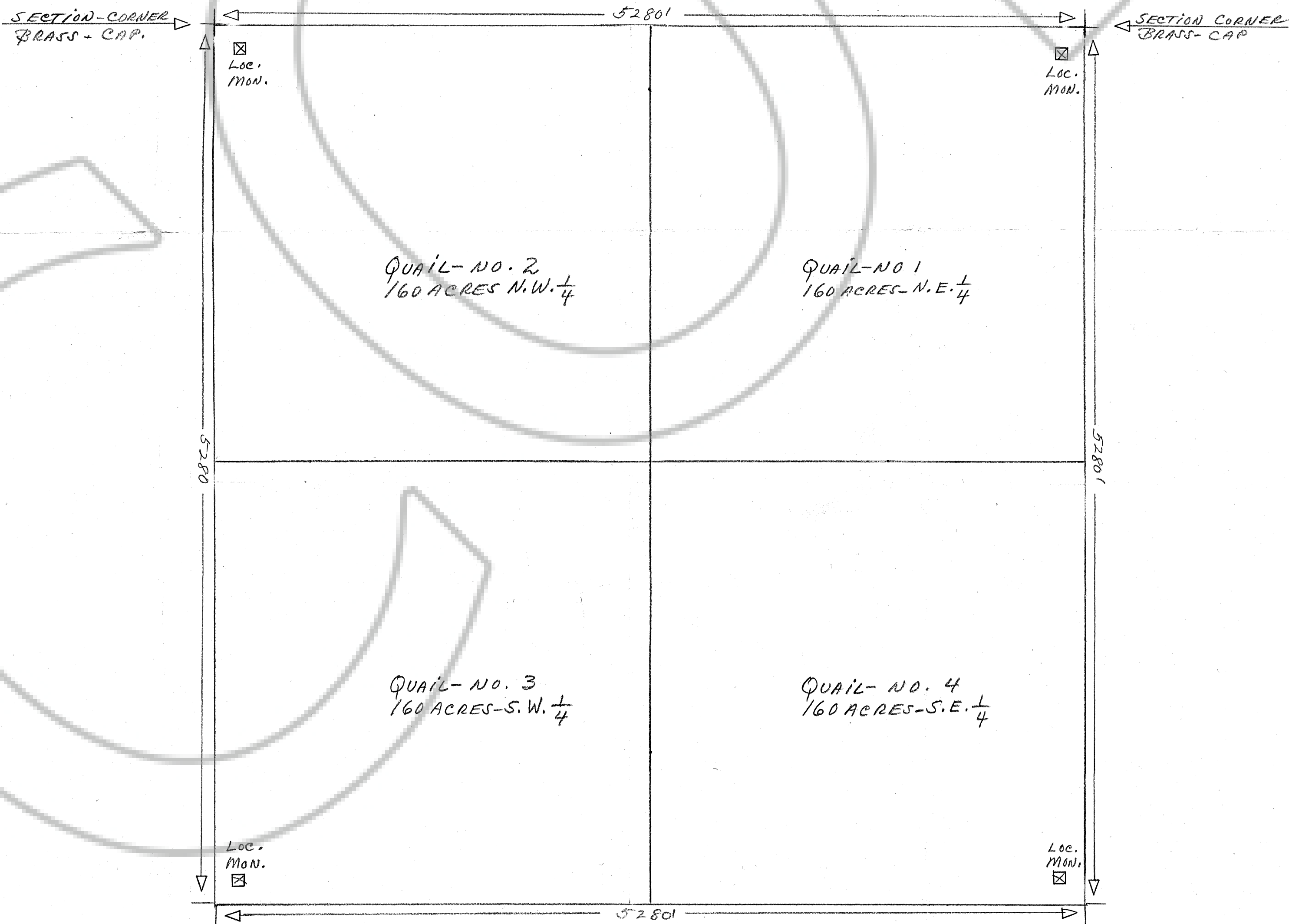


SECTION-32, T31N, R49E.



MAP OF THE RANGEWIND PLACER CLAIM GROUP.
 BULLION MINING DISTRICT, EUREKA COUNTY, NEV.
 LOCATED:- MAY, 23RD, 1970.
 BY:- L.C. CARTER
 P.O. BOX 58
 BEOWAWE, NEVADA
 SECTION-32, T31N, R49E.
 BEOWAWE, QUADRANGLE, NEVADA (1957)

SECTION-4, T30N, R49E.



MAP OF THE QUAIL PLACER CLAIM GROUP.
 BULLION MINING DISTRICT, EUREKA COUNTY, NEV.
 LOCATED:- MAY AND JUNE 20TH, 1970.
 BY:- L.C. CARTER
 P.O. BOX 58
 BEOWAWE, NEVADA
 SECTION-4, T30N, R49E.
 BEOWAWE, QUADRANGLE, NEVADA (1957)

Filed
 RECORDED AT THE REQUEST OF
 HAZ SARACEK
 on AUGUST 22, 1972
 at 10:11 a.m. past 11 A. M.
 In Book _____ of OFFICIAL
 RECORDS
 OF EUREKA COUNTY, NEVADA
 Recorder
 File No. 26221 Page 3