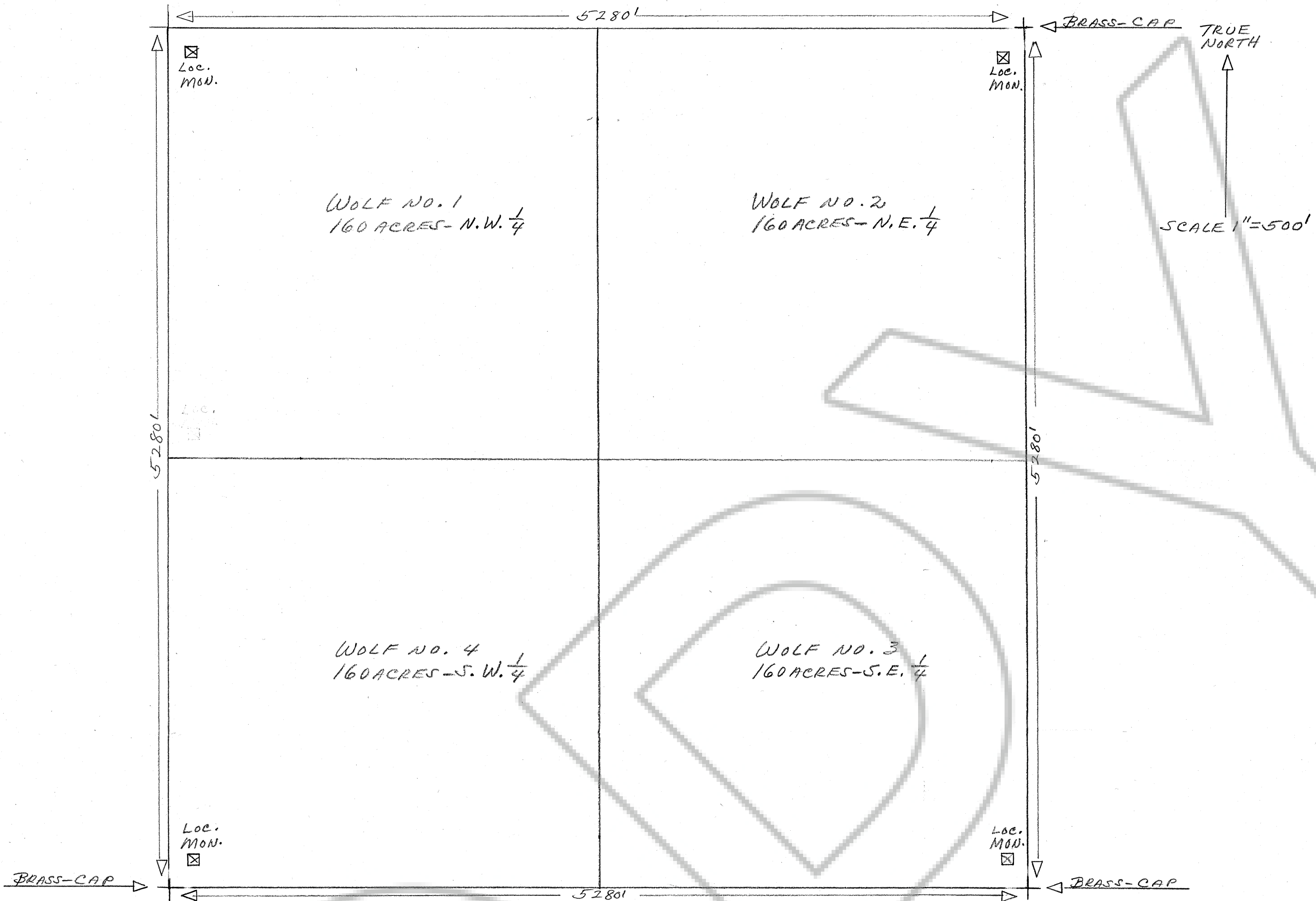
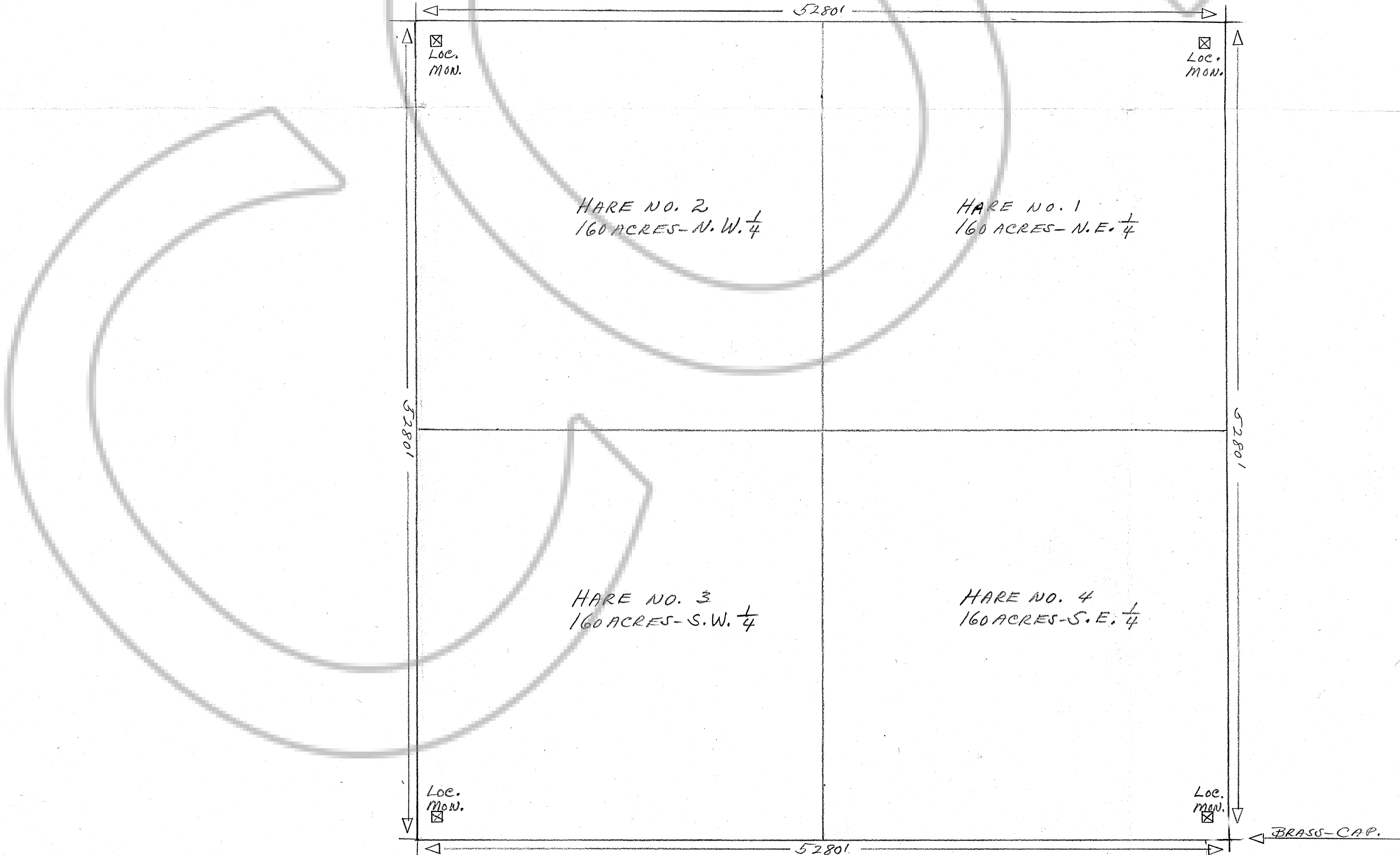


SECTION-6, T29N, R50E.



MAP OF THE WOLF PLACER CLAIM GROUP.  
 BULLION MINING DISTRICT, EUREKA COUNTY, NEV.  
 LOCATED:- MAY, 21ST, 1970.  
 BY:- L.C. CARTER  
 P.O. Box 58  
 BEOWAWE, NEVADA.  
 SECTION-6, T29N, R50E.  
 FRENCHIE CREEK QUADRANGLE (1954)

SECTION-34, T30N, R50E.



MAP OF THE HARE PLACER CLAIM GROUP.  
 BULLION MINING DISTRICT, EUREKA COUNTY, NEV.  
 LOCATED:- MAY, 21ST, 1970  
 BY:- L.C. CARTER  
 P.O. Box 58  
 BEOWAWE, NEVADA  
 SECTION-34, T30N, R50E.  
 FRENCHIE CREEK QUADRANGLE (1957)

Filed AT THE REQUEST OF  
 Lee Venables  
 on August 22, 1972  
 at 11 A. M.  
 RECORDS OF EUREKA COUNTY, NEVADA  
 300  
 6222