

PRELIMINARY MAP
FINAL ACCURACY
HAS NOT BEEN
FIELD CHECKED

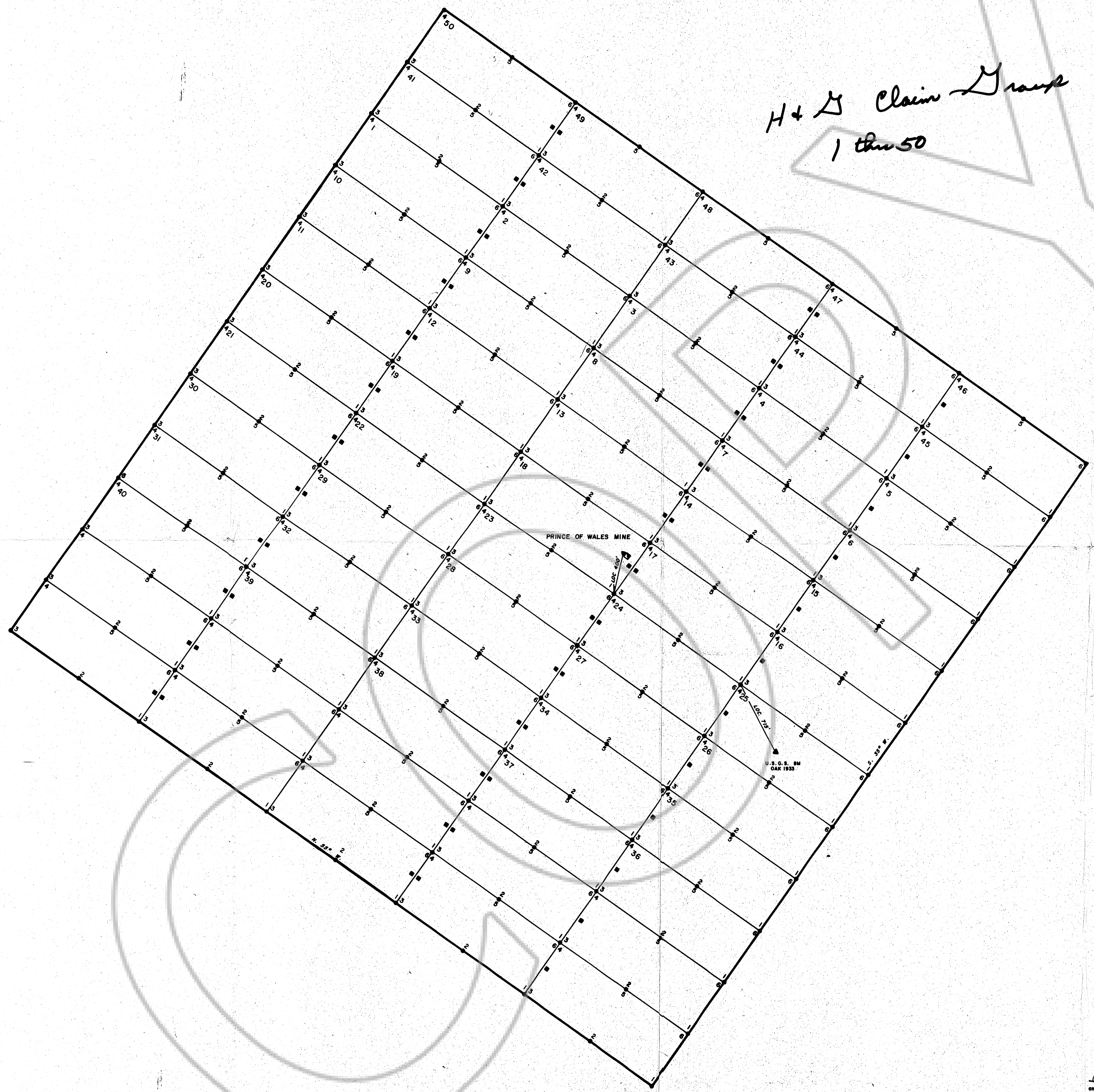
R 52 E

EXPLANATION

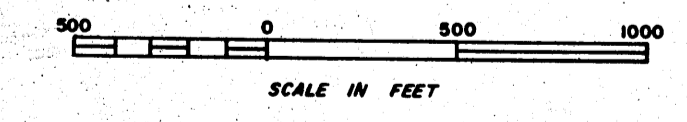
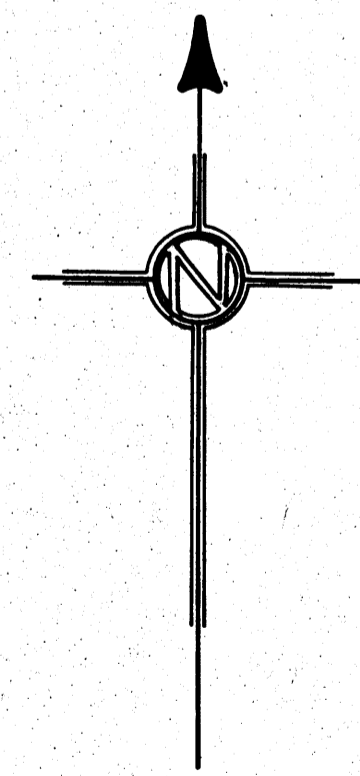
H & S Claim Group
1 thru 50

T
24
R

T
24
R



- Shaft
- Discovery Mountain
- ▲ Tie in Monument
- Side Centers



Filed
RECORDED AT THE REQUEST OF
William Gerson
on *August 22* 1972
at *3:02* min. past *2 P.* M.
RECORDS
OF EUREKA COUNTY, NEVADA
Recorded *56227* 300
File No. *56227* Part 1

**GREENLAND
EXPLORATION CO LTD**
Edmonton, Alberta *Canada*

CLAIM MAP **H & S CLAIMS**
PRINCE OF WALES COPPER PROJECT
ALPHA MINING DISTRICT

Eureka County *Nevada*

Scale 1" = 500' Date July 15, 1972
Mapping *Einar C Erickson* **Gx-Hg-Pw-3**
Drafting *Jim Reza* REVISED AUGUST 9, 1972