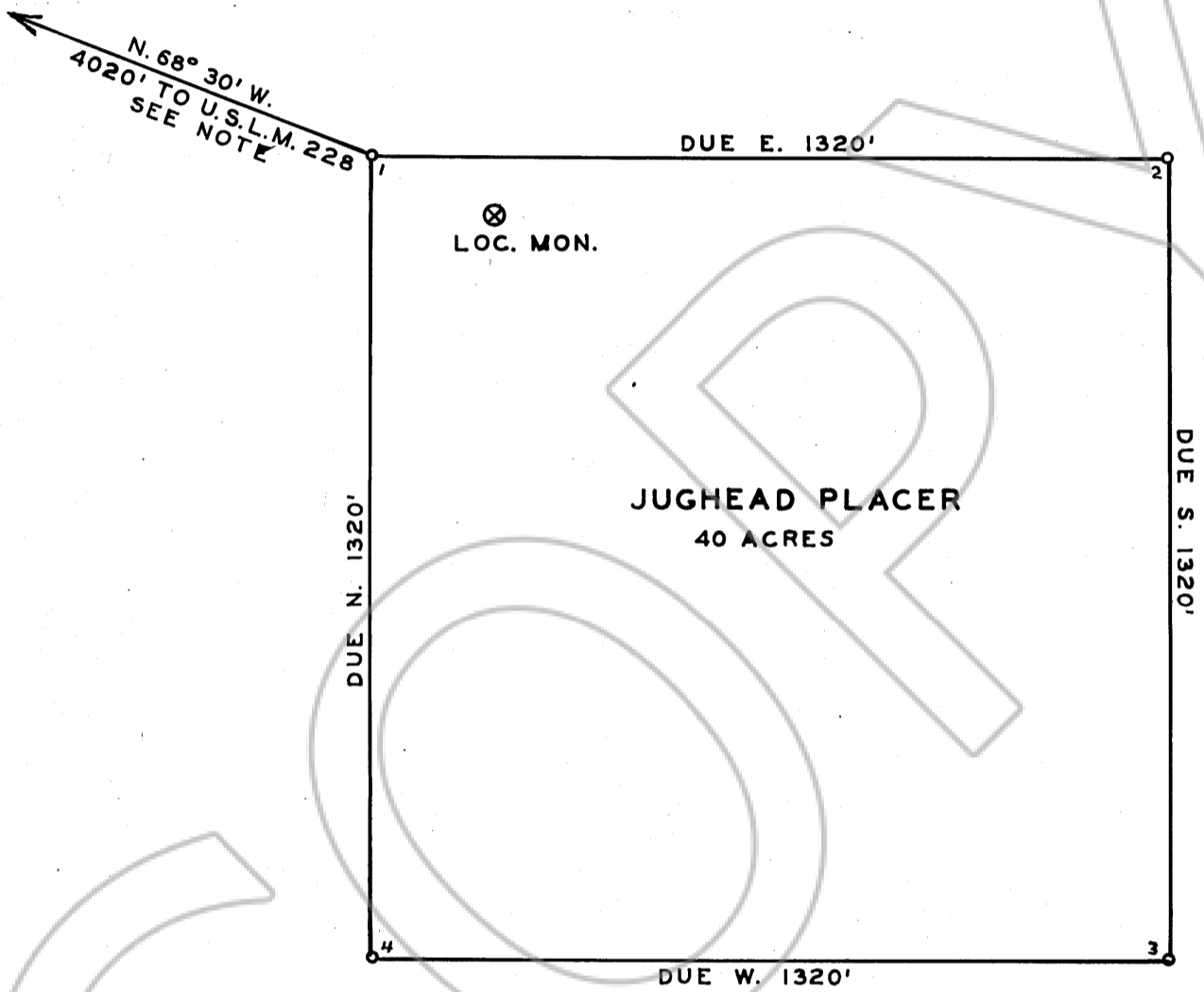


NOTE: OFFICIAL B.L.M. RECORDS ON LOCATION OF
 U.S.L.M. 228 STATE THAT THE W.1/4 COR.
 SEC. 25, T. 28 N., R. 49 E. BEARS N. 45° 35' E., 38,410'.
 SEE USGS HORSE CREEK VALLEY & FRENCHIE CREEK 15' QUADS.



MAP OF JUGHEAD PLACER CLAIM, SEC. 32, T. 27 N., R. 49 E.
 BUCKHORN MINING DISTRICT, EUREKA CO., NEVADA
 OWNED BY W. B. GOLDEN, RENO, NEVADA
 FIELD CHECK & MAP PREPARATION BY E. L. STEPHENSON

JULY 1972

SCALE 1" = 300'

Filed
 RECORDED AT THE REQUEST OF
 William B. Golden
 on August 23, 1972
 at 51 mins. past 4 P. M.
 RECORDS, page XXXXX OFFICIAL
 RECORDS, page XXXXXXXXXXXX RECORDS
 OF EUREKA COUNTY, NEVADA
 Thelma A. McFarlie
 Recorder
 File No. 56241 Fee \$3.00