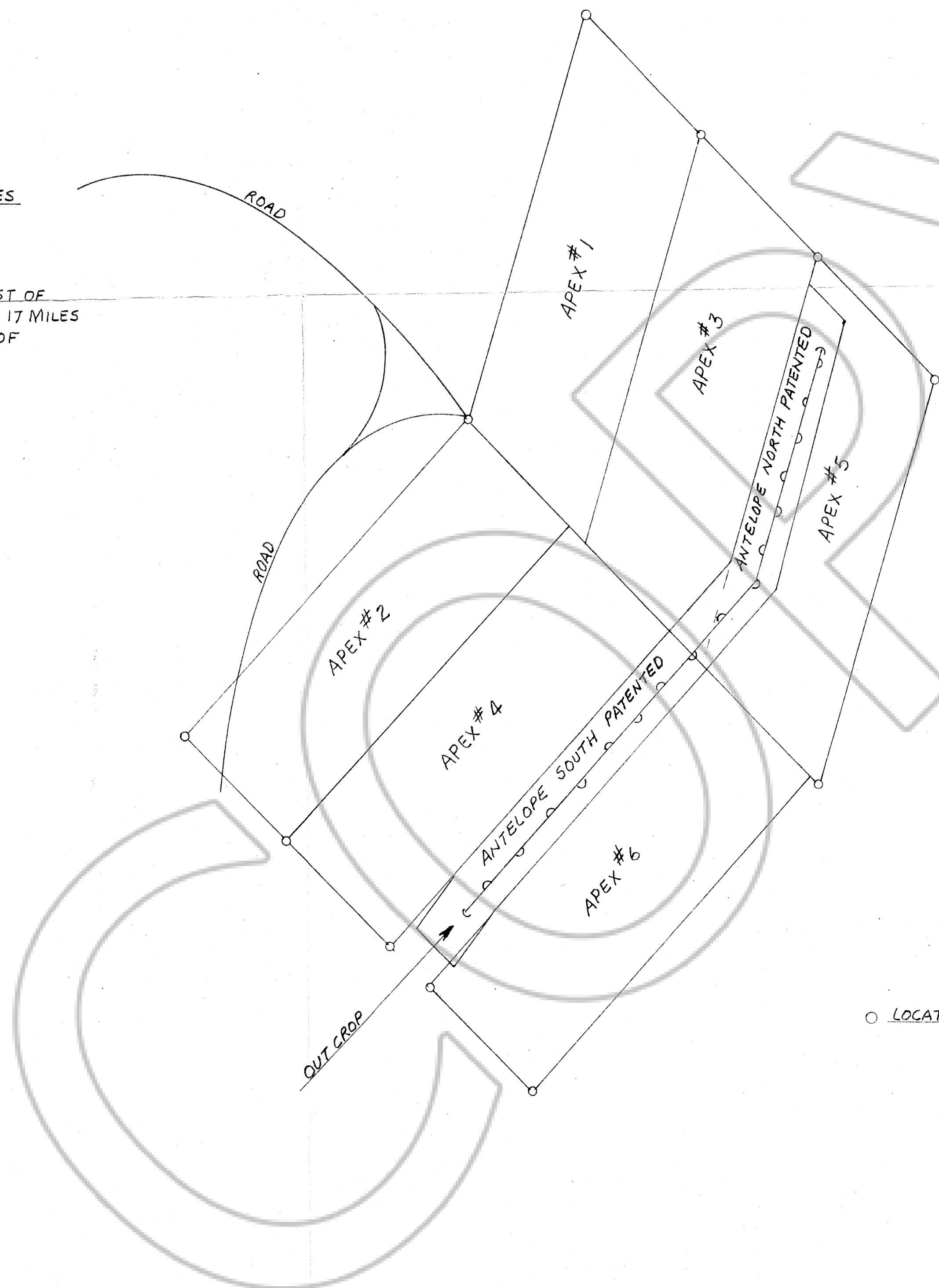
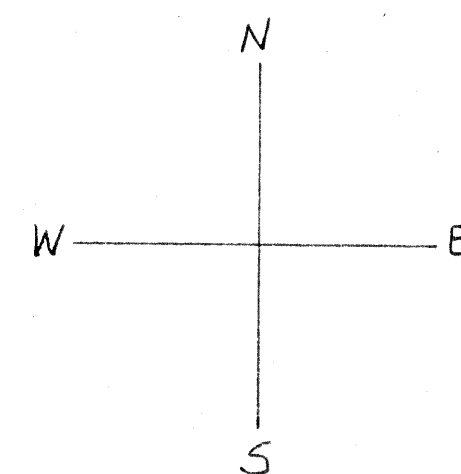


← TO HWY. 50 - 17 MILES

CLAIMS-17 MILES WEST OF
EUREKA ON HWY. 50 & 17 MILES
SOUTH ON EAST SIDE OF
ANTELOPE VALLEY



○ LOCATION STAKES



Filed
RECORDED AT THE REQUEST OF
TOPAZ Minerals Inc
on August 29, 1972
at 53 mins. past 10 A. M.
in Book _____ of OFFICIAL
RECORDS, PAGE _____, RECORDS
OF EUREKA COUNTY, NEVADA
Recorded by *Julius A. Heitler*
File No. 56322 Fee \$ 3.00

TOPAZ MINERALS INC.

SCALE: 1"=300'	APPROVED BY	DRAWN BY
DATE: 8-26-72		DWM
ANTELOPE NORTH & SOUTH PATENTED APEX 1-6 STAKED		
LOCATION: EUREKA COUNTY, NEVADA		DRAWING NUMBER T-109