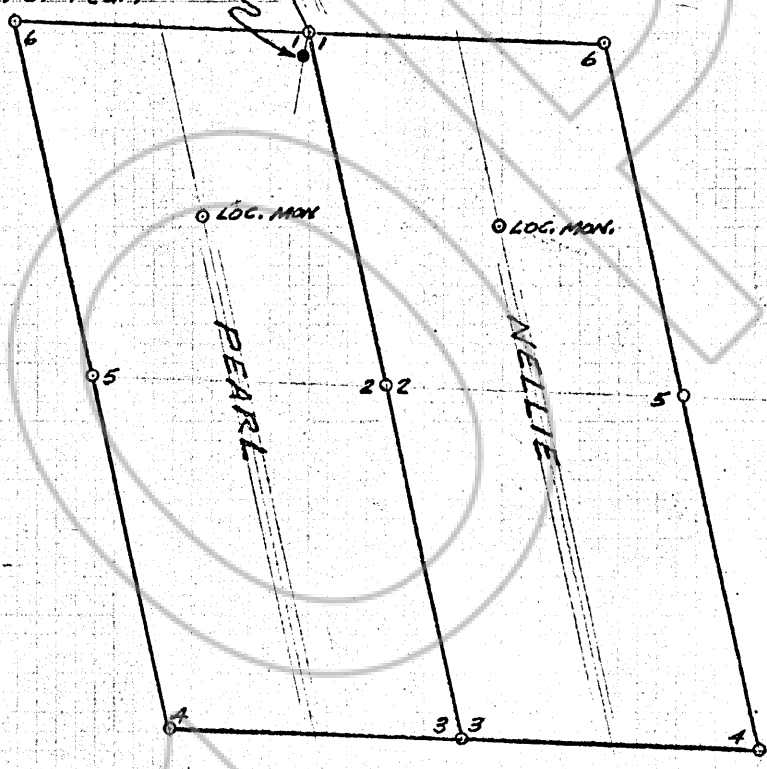


T19N, R53E
 34 35
 N26°W 1850' (B19 & Dist. scaled)

N

SCALE: 1" = 400'

SW Cor. Hamburg Patent
 No. 62 bears S9°30'N, 51'
 from Cor. No. 1 of Pearl



Pearl - Located July 27, 1906
 Nellie - Located August 8, 1906

Filed
 RECORDED AT THE REQUEST OF
 Walter A. Paroni
 on August 30, 1972
 at 48 mins. past 10 A. M.
 RECORDS, page XXXXXXXX, RECORDS
 OF EUREKA COUNTY, NEVADA
 Recorder *Willis D. McTear*
 File No. 56355-3⁰⁰

PARONI GROUP
 EUREKA MINING DISTRICT
 EUREKA, NEVADA
 WALTER A. PARONI