

# MAP of PART of KLONDIKE GROUP of CLAIMS

EMBRACING KLONDIKE Nos. 1, 2, 3; 8, 9, 10, 11, 12, 13; 18, 19, 20, 21, 22, 23 & 39.

SECS. 27 & 28  
T25N, R52E

ALPHA MINING DIST.  
EUREKA COUNTY

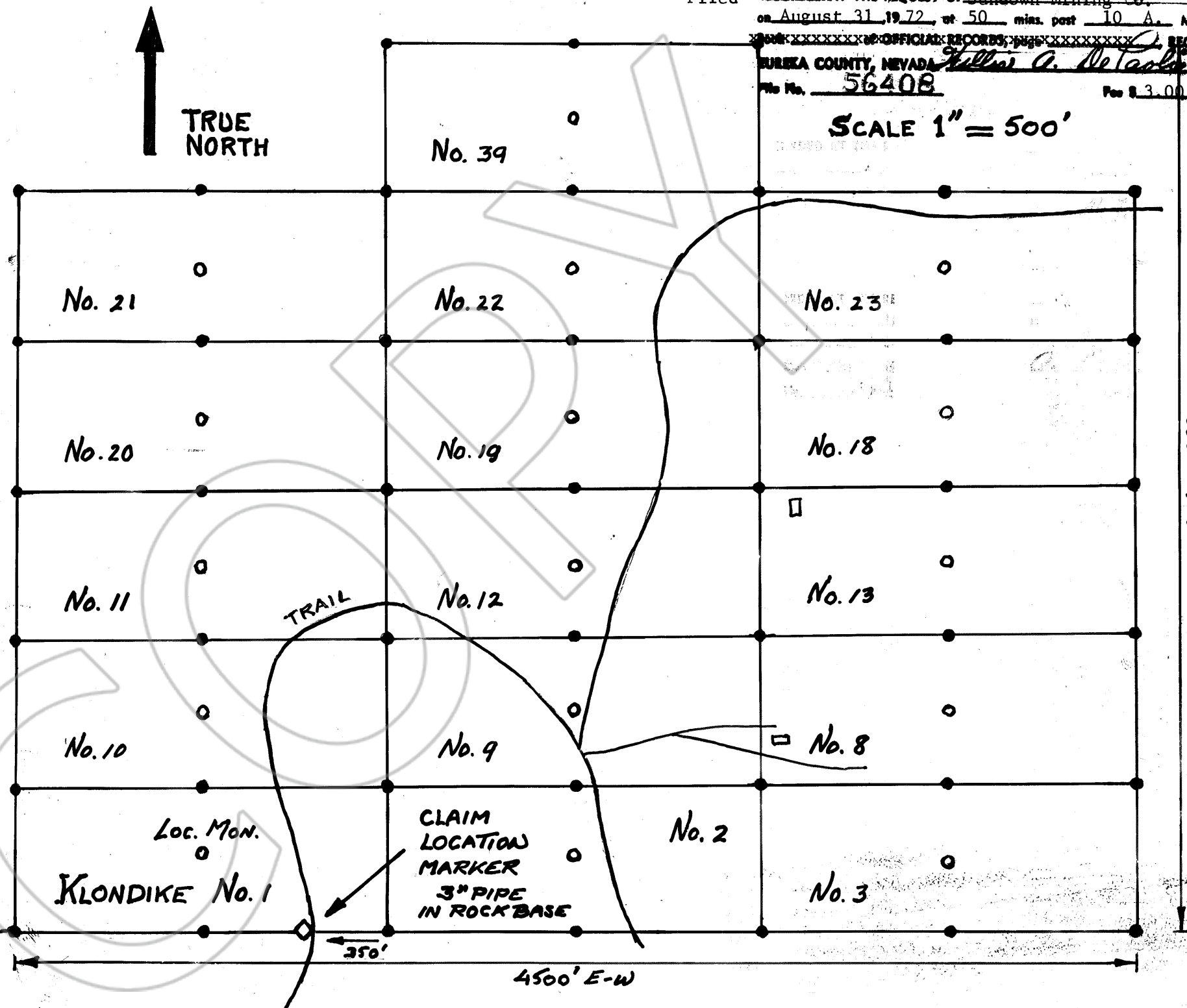
LOCATED 7/16/68  
by SUNDOWN MINING Co.  
P.O. Box 197  
EUREKA, NEV.

**NOTE:**

DIMENSIONS (each claim)  
1500 x 600 ft.  
ALL CORNERS 4 x 4 POSTS  
AT LEAST 4 ft. HIGH.  
○ = LOCATION MONUMENT

29	28
32	33

← INFERRED SEC. CORNER



Filed RECORDED AT THE REQUEST OF Sundown Mining Co.  
on August 31, 1972, at 50 mins. past 10 A. M.  
OFFICIAL RECORDS, page XXXXXXXX  
EUREKA COUNTY, NEVADA Julius A. DeTale Recorder  
No. 56408 Fee \$ 3.00