

MAP OF: Amy, Bruno, Bruno 1, Cavalier, Eagle, Erwin (Erin), Esther, Glittering Galore, Josephine, Cortez, Cortez No. 1 to No. 9 inclusive, Blue Bell, Blue Jay, London, Majestic, Majestic No. 1, Mascot, No. 9, No. 10, No. 11, No. 23, No. 24, Monterey, Ida, Ida No. 1 to Ida No. 4 inclusive, Oneonton, Shamrock, Tom Gillam, Valley View, Victory, Victory No. 1, Highland Lassie, Lassie No. 1, Lassie No. 2, Helen, Helen No. 1, Helen No. 2, Whitey, Sheila, Norman, Esther B., Nora, Buddy, Buddy No. 1, Buddy No. 2, Buddy No. 3, Long Shot, Long Shot No. 1, C-1 through C-49 inclusive, M-18 through M-82 inclusive, M-101 through M-117 inclusive, Lode Mining Claims.

Owners: Allen Russell and Helen A. Russell  
P.O. Box 648  
Beowawe, Nevada 89821

(See sheet 2) →

Key:  
X = LOCATION MONUMENT  
└ = RIGHT ANGLE  
DDH = Diamond Drill Hole

Filed  
RECORDED AT THE REQUEST OF  
Allen Russell  
on Aug 31, 1972  
at 56 mins. past 10 A M.  
in Book \_\_\_\_\_ of OFFICIAL  
RECORDS, page \_\_\_\_\_ RECORDS  
OF EUREKA COUNTY, NEVADA  
Recorder Thelma D. Watson  
File No. 56432 Fee \$ 3.00

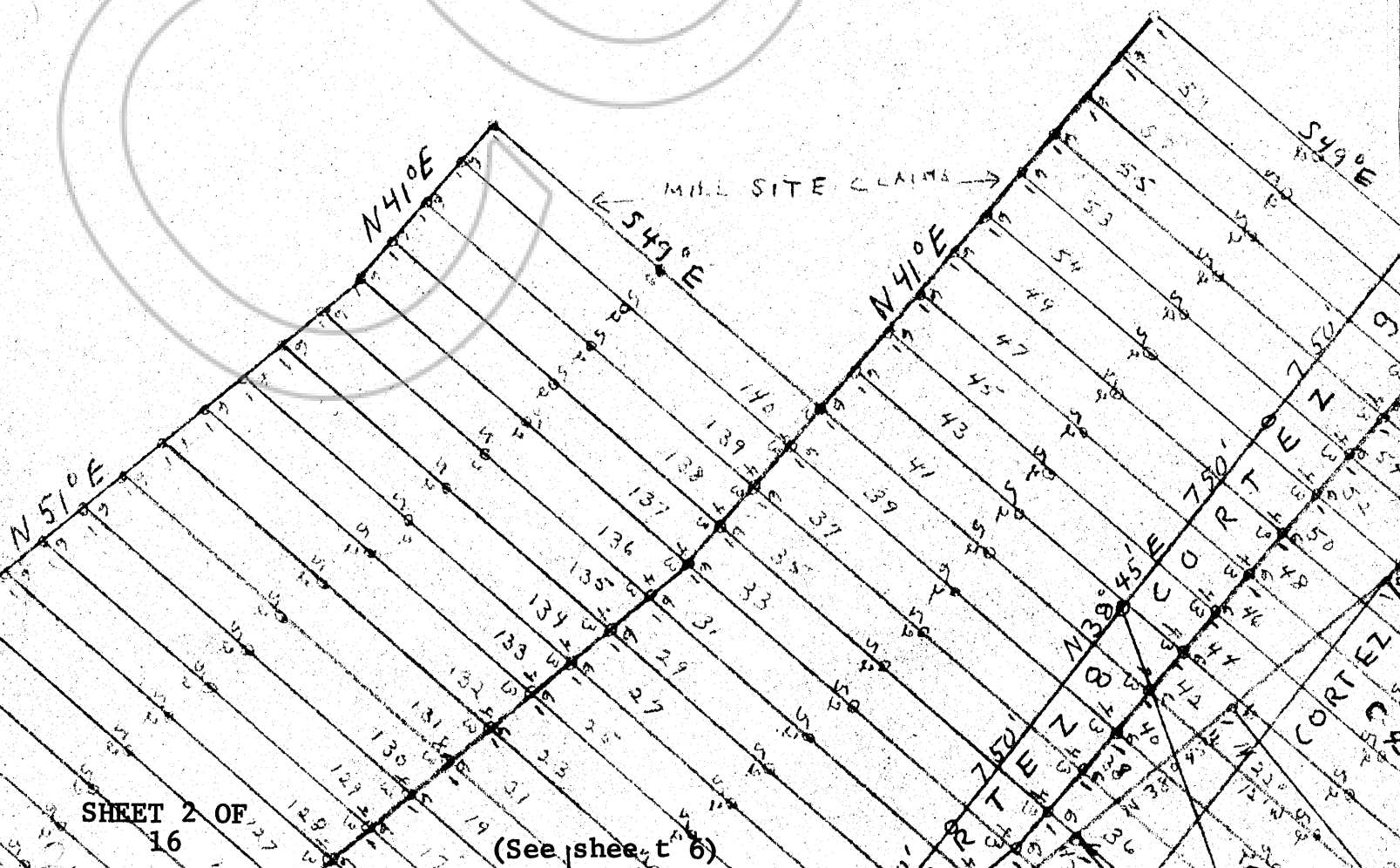
EUREKA COUNTY  
CLERK

N41 05'

COPY

(See sheet 1)

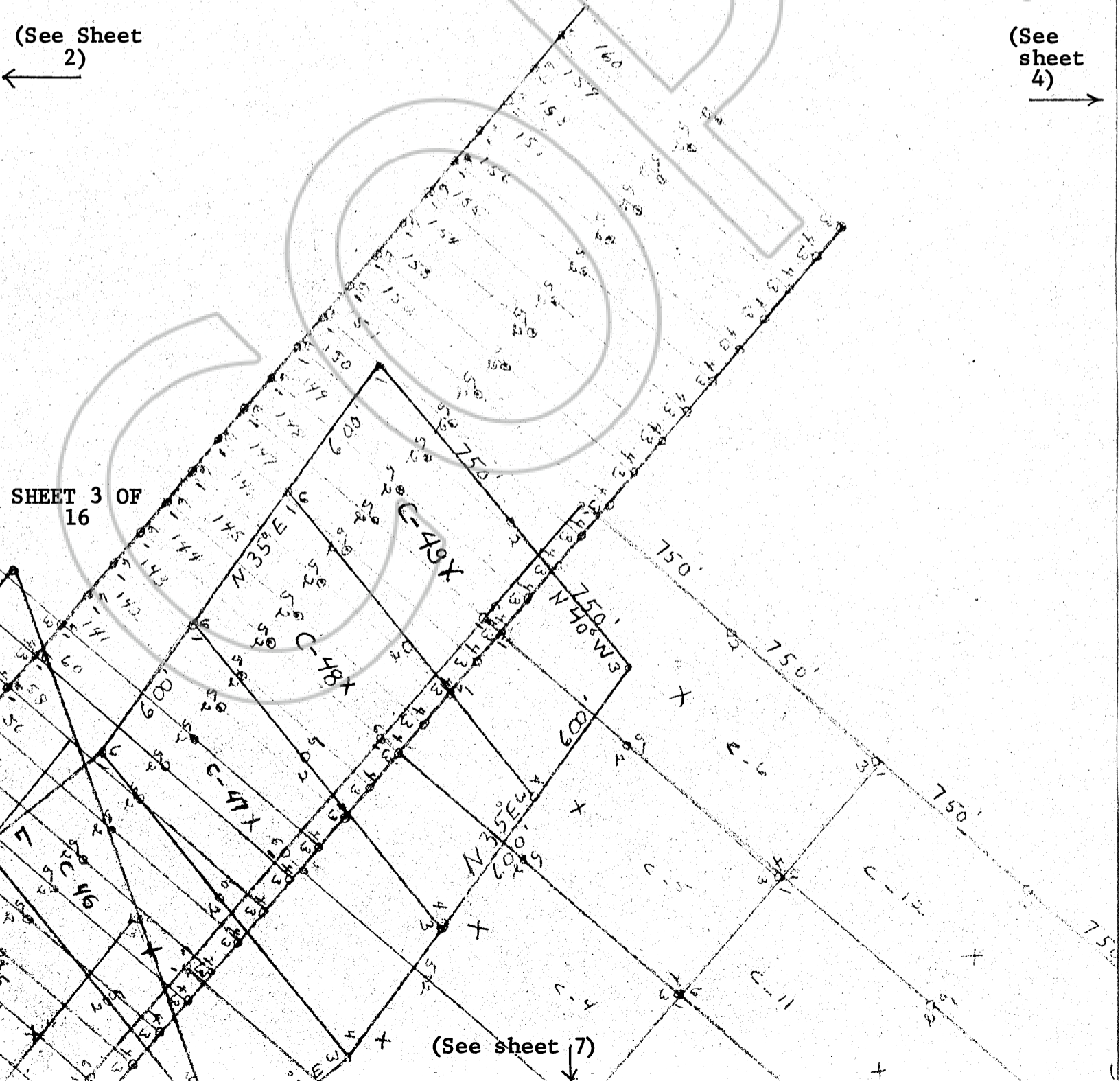
(See sheet 3)



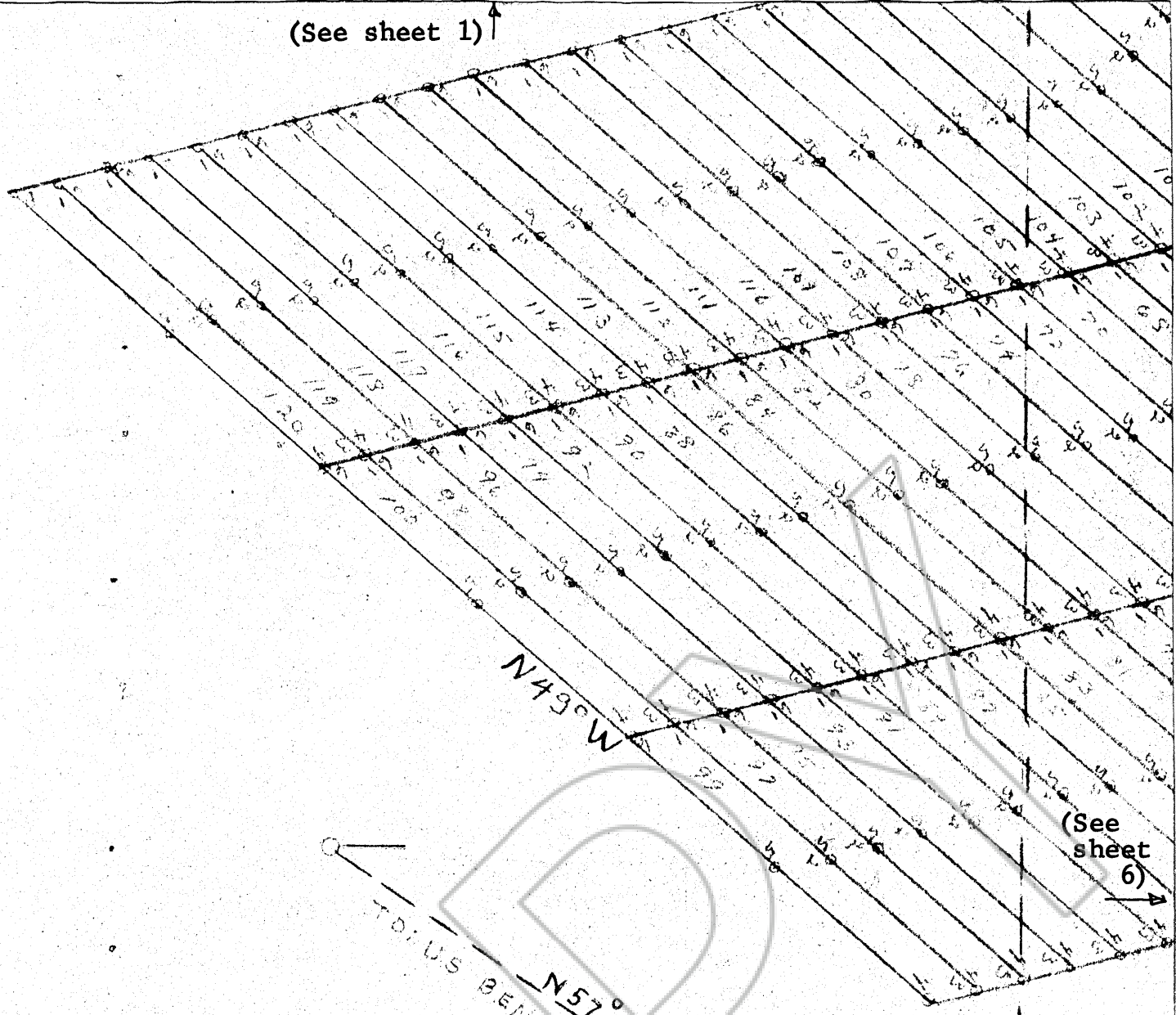
(See Sheet 2)

(See sheet 4)

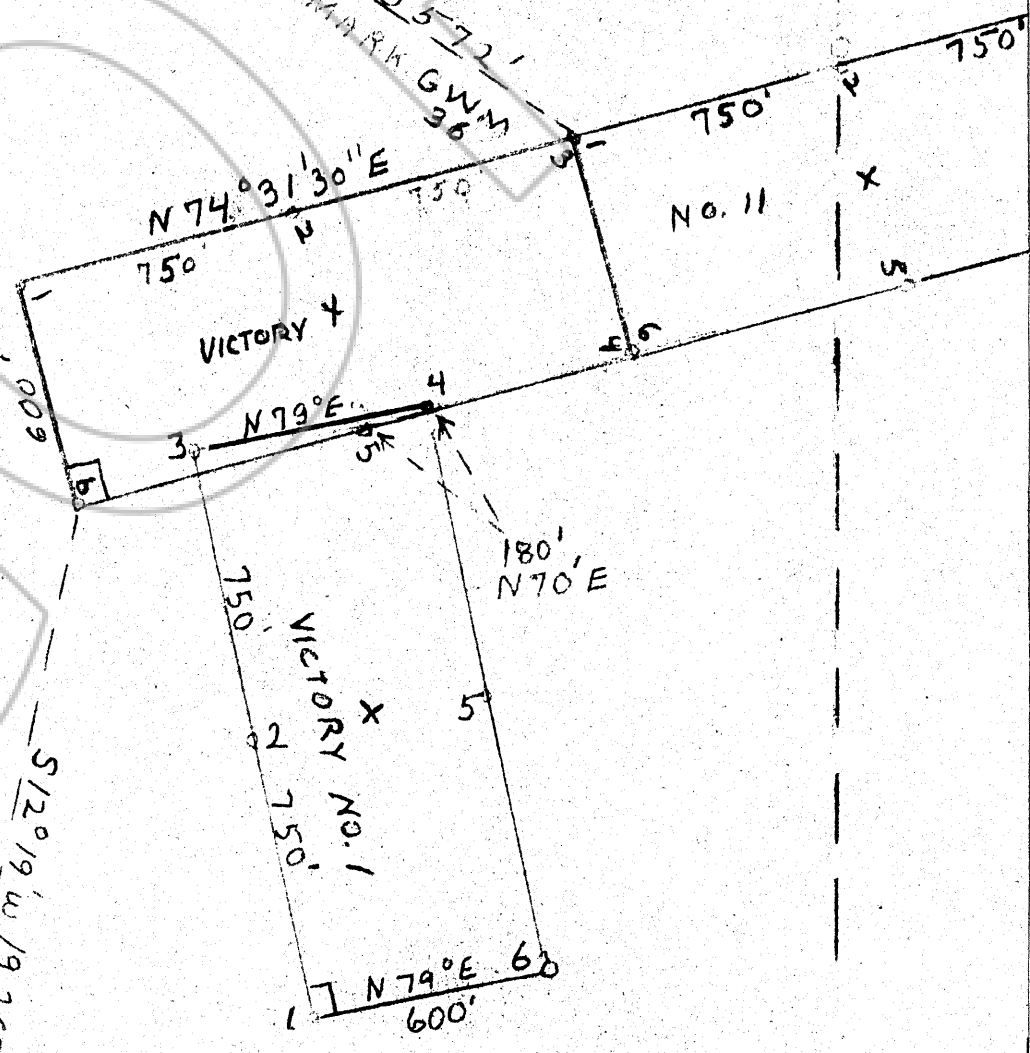
SHEET 3 OF 16



(See sheet 1)



(See sheet 6)



(See sheet 9)

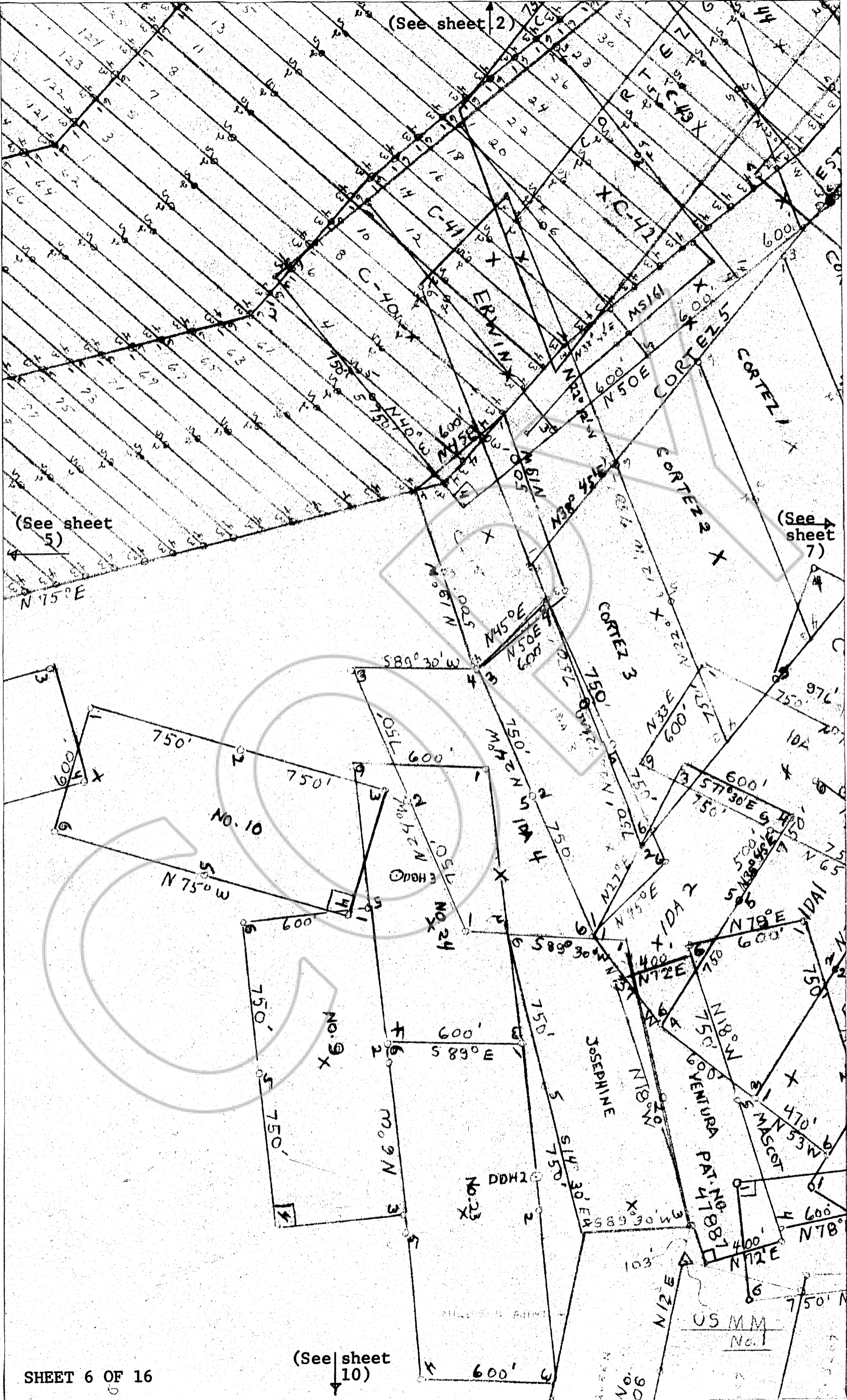
(See sheet 2)

(See sheet 5)

(See sheet 7)

N 75° E

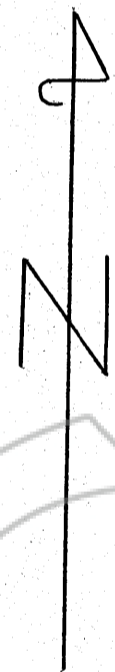
(See sheet 10)



OPY

OP

C

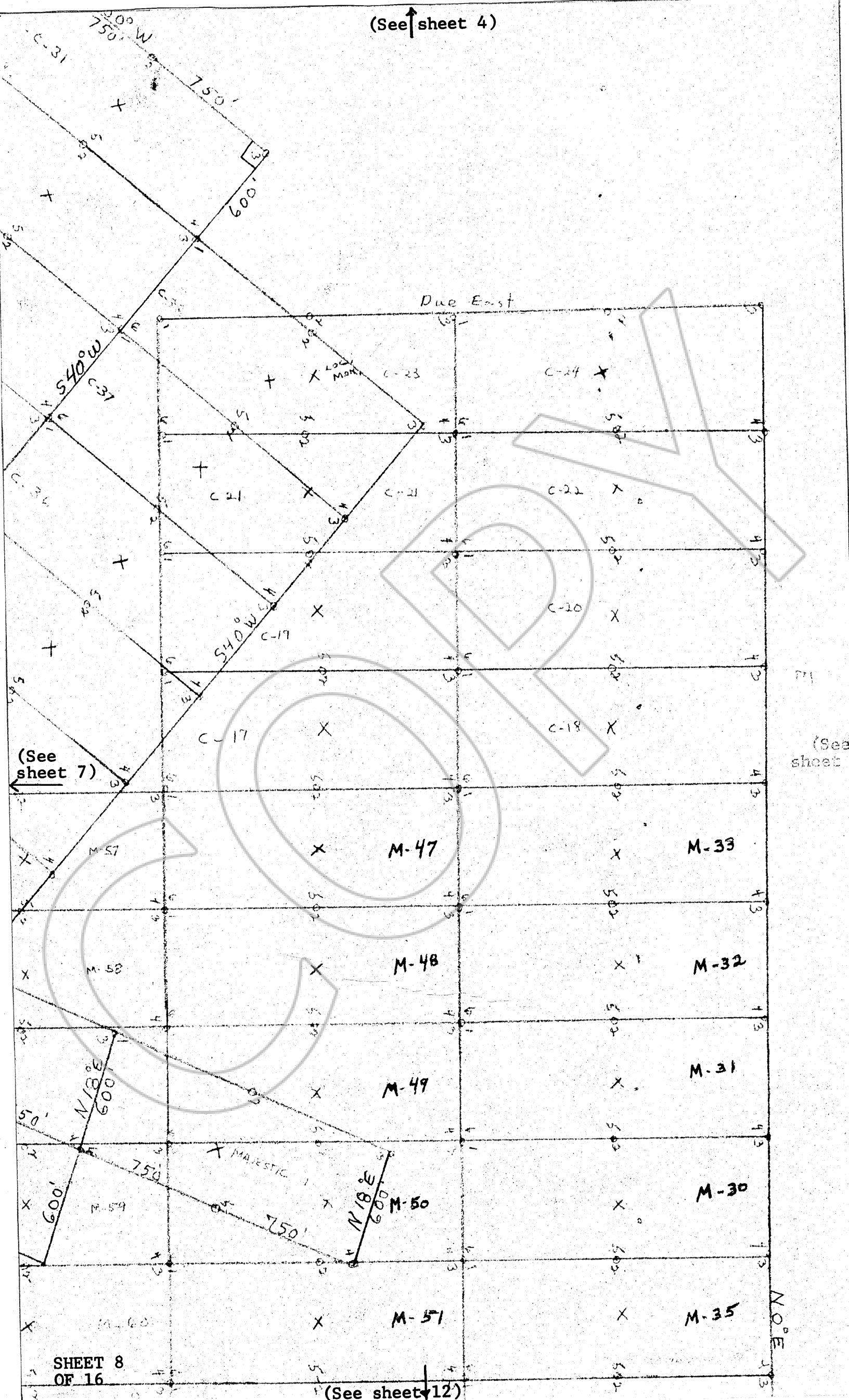


(See sheet 3)

c-1 through c-14, inclusive,  
c-16, c-25 through c-38, inclusive  
are all right angles, 600' x 1500'



(See sheet 4)



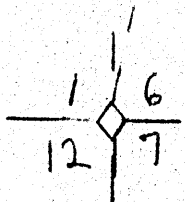
(See sheet 7)

(See sheet 7)

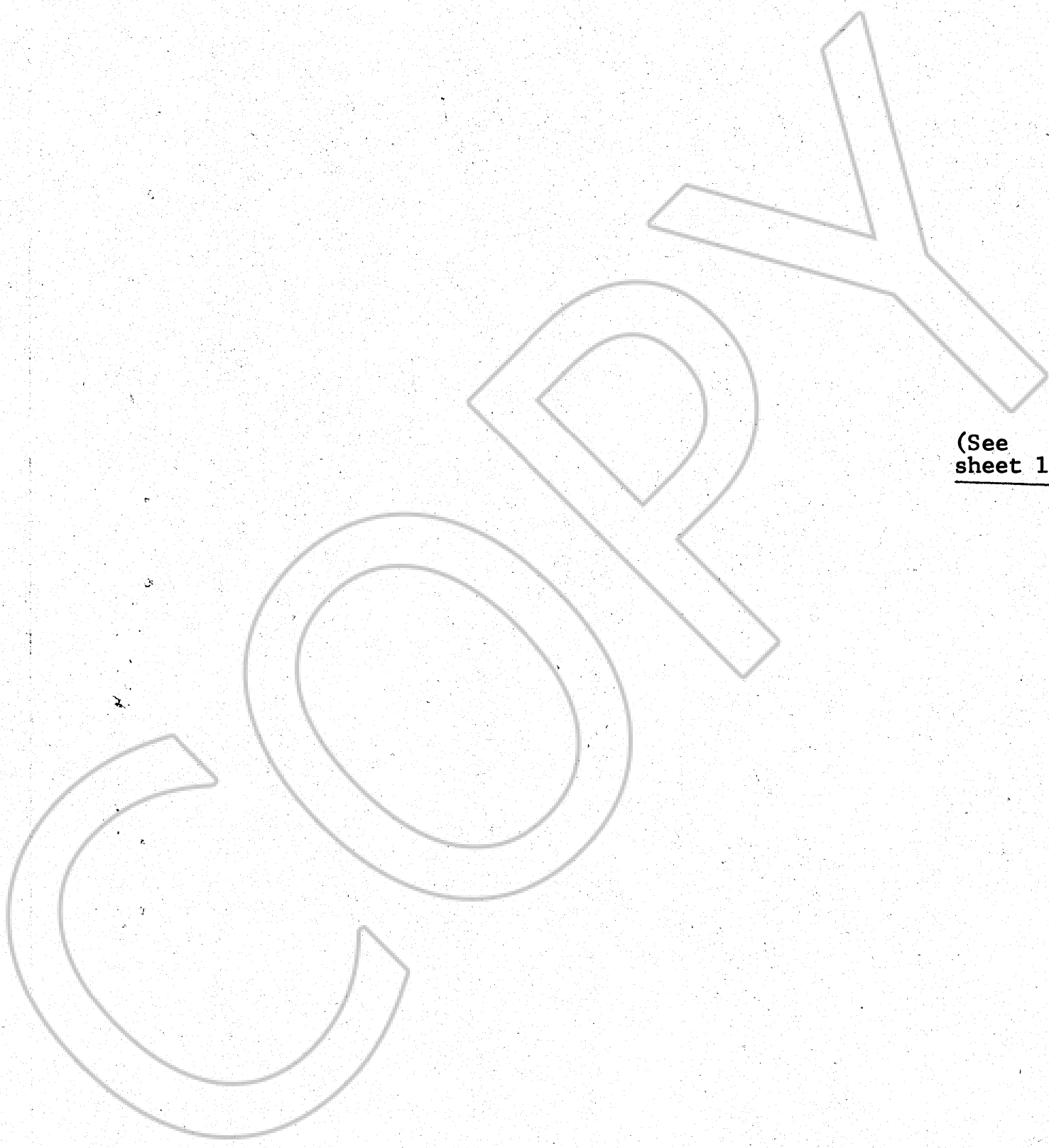
NO. E



(See sheet 5) ↑



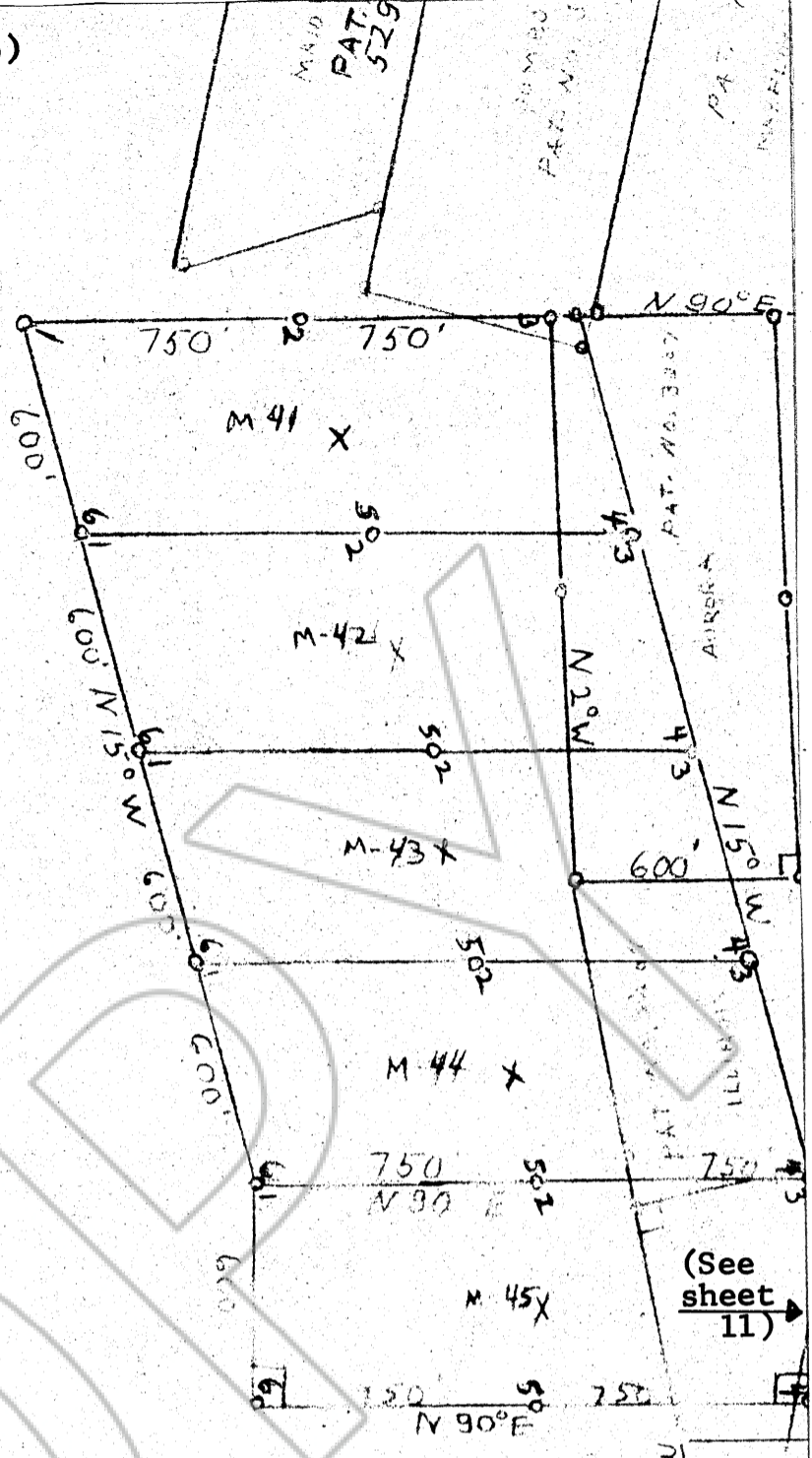
T26N ↗  
R48E  
M.D.B.E.M.



(See sheet 10) →

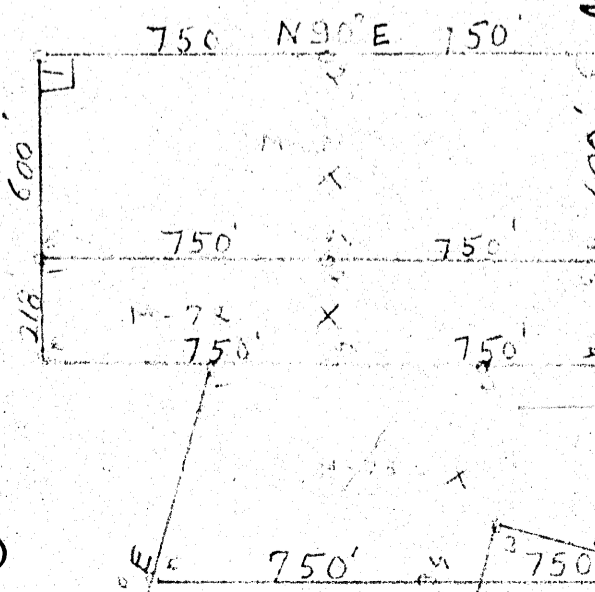
(See sheet 13) ↓

(See sheet 6)



(See sheet 9)

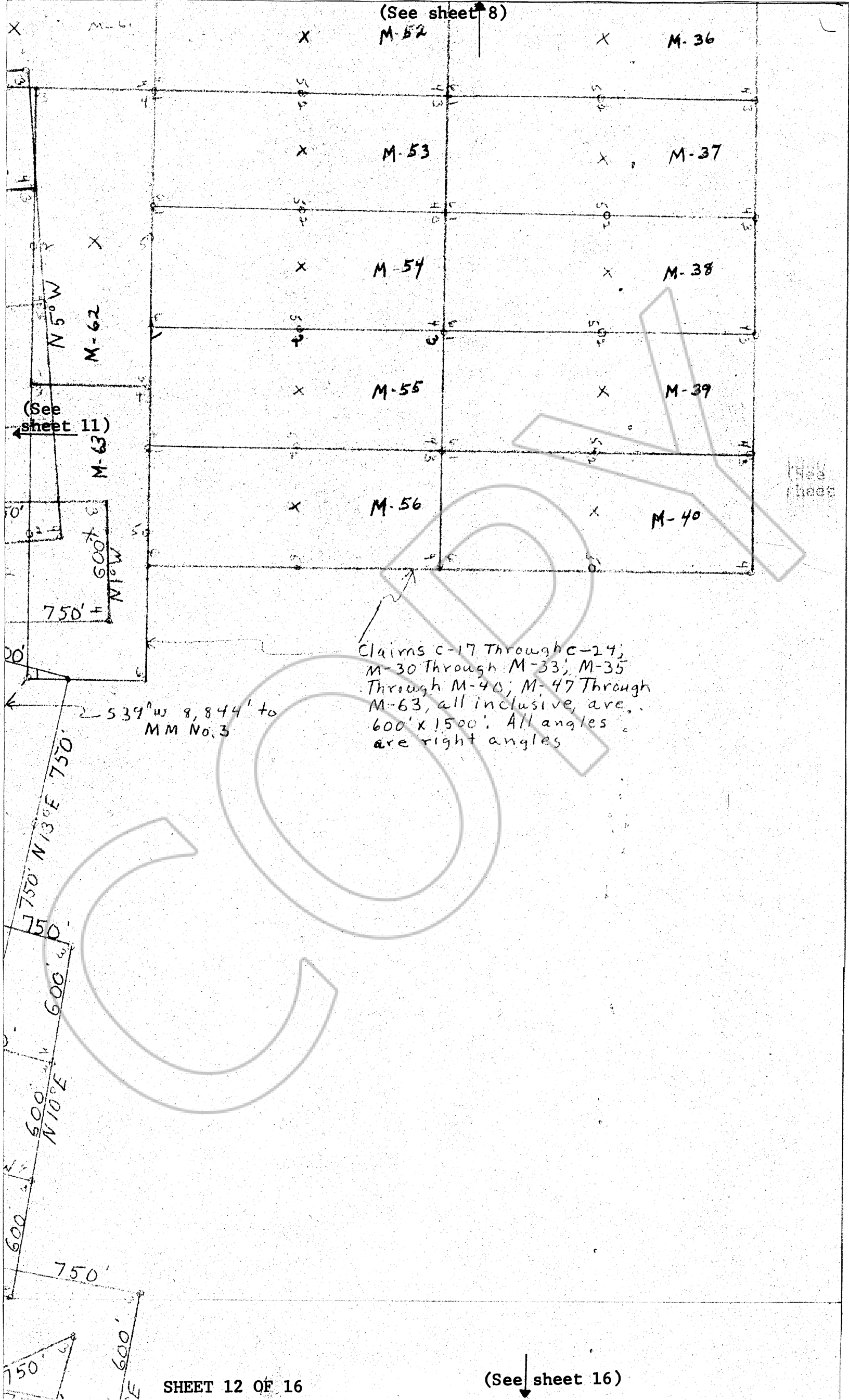
(See sheet 11)



(See sheet 14)

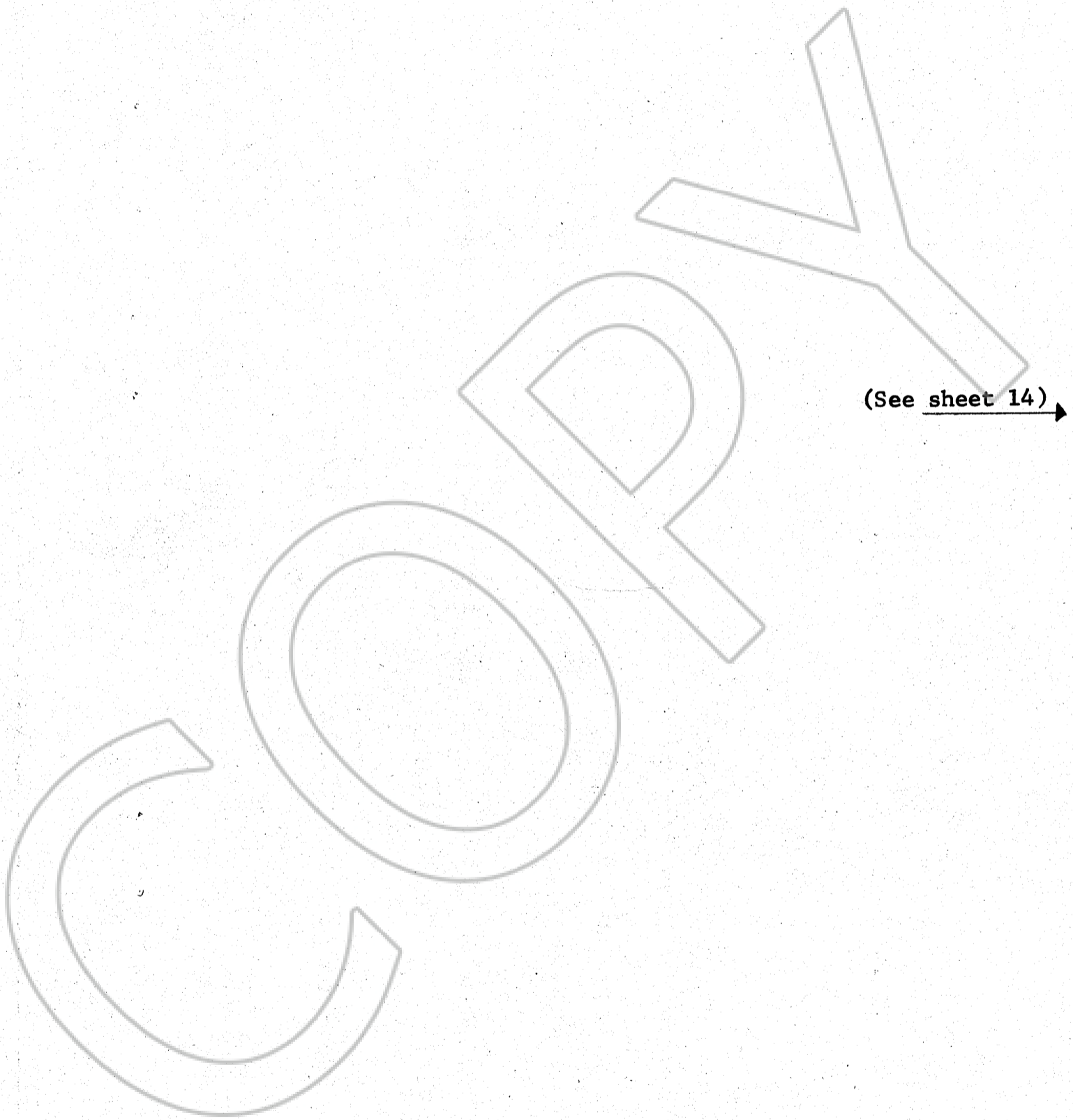


(See sheet 8)

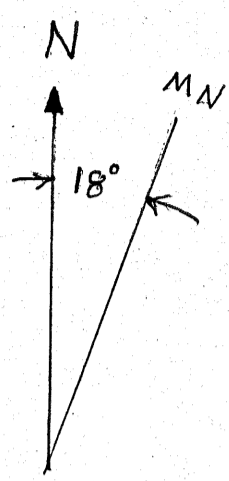
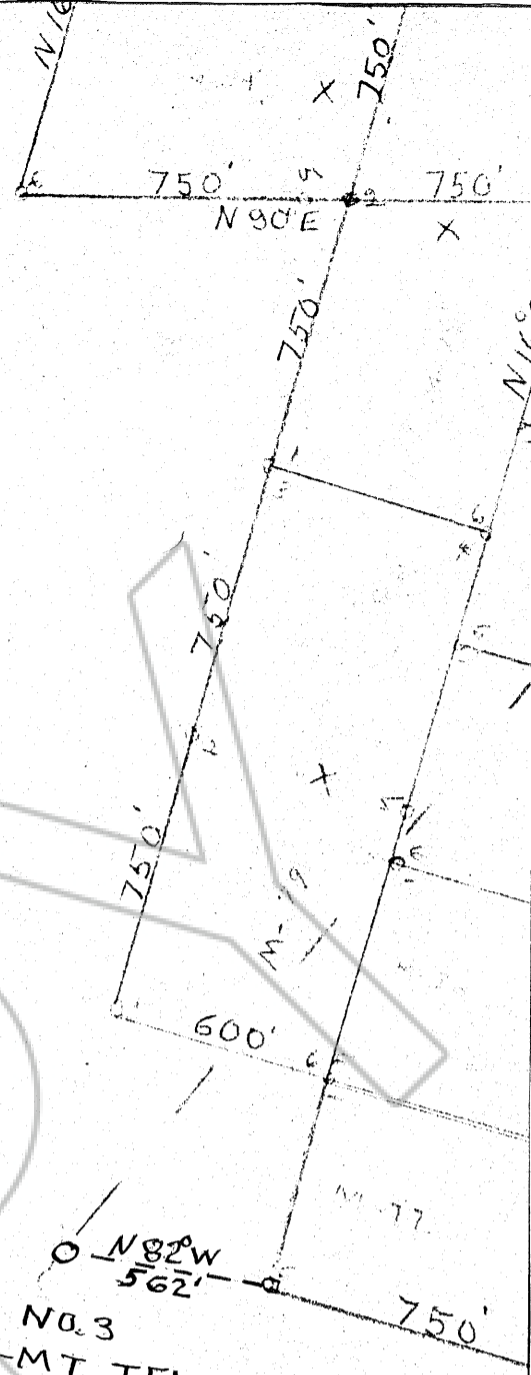


Claims c-17 Through c-24;  
 M-30 Through M-33; M-35  
 Through M-40; M-47 Through  
 M-63, all inclusive, are  
 600' x 1500'. All angles  
 are right angles

(See sheet 9)



(See sheet 10)



USGS QUAD MAP  
CORTEZ NEV 1938



USGS M.M. NO. 3  
ON CREST - MT. TENABO  
IN T27N R48E

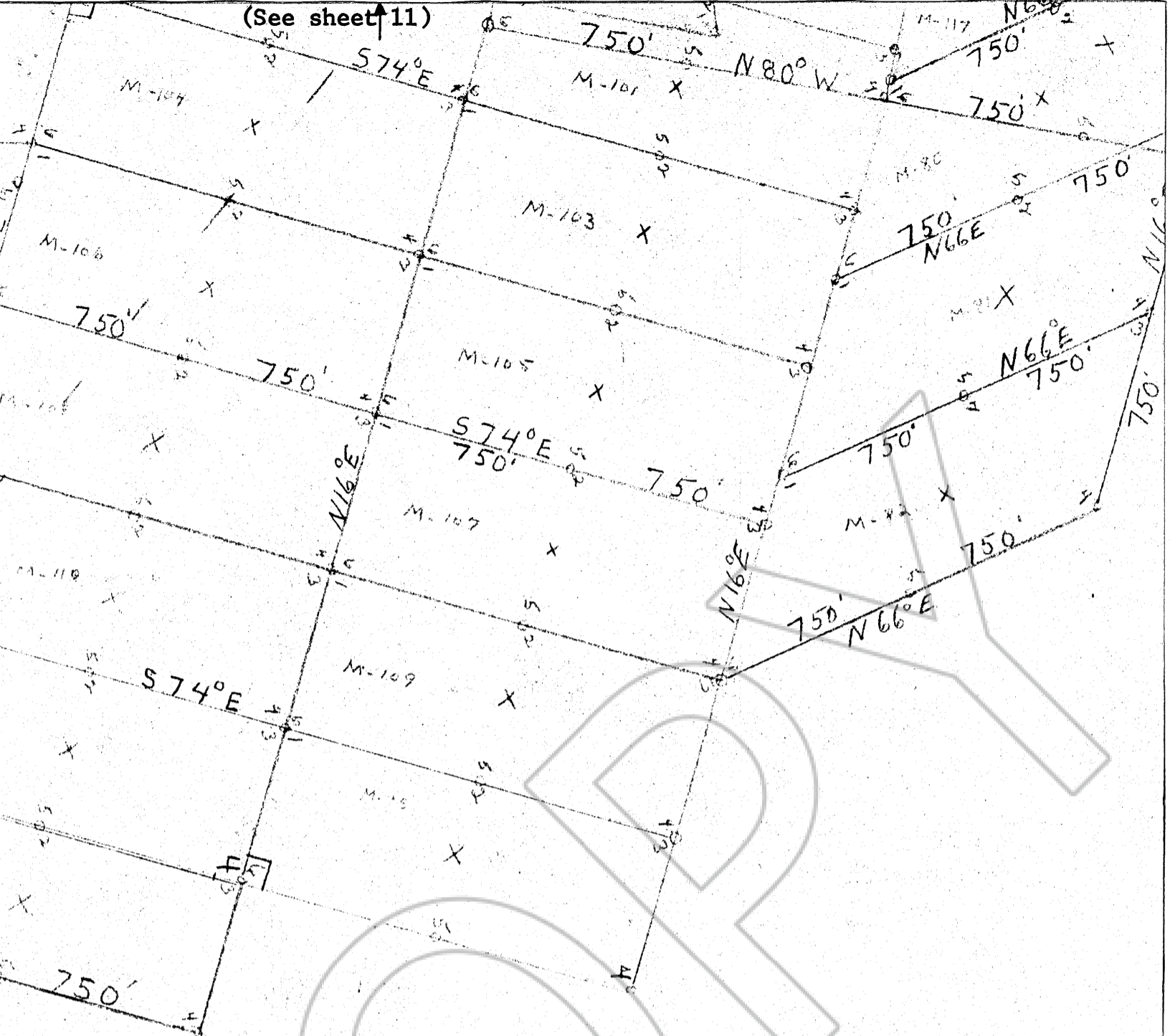
(See sheet 13)

(See sheet 15)



SCALE 1 INCH = 500'

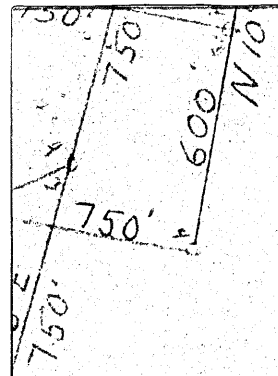
(See sheet 11)



(See sheet 14)

(See sheet 16)

(See sheet 12) ↑



← (See sheet 15)

COPY