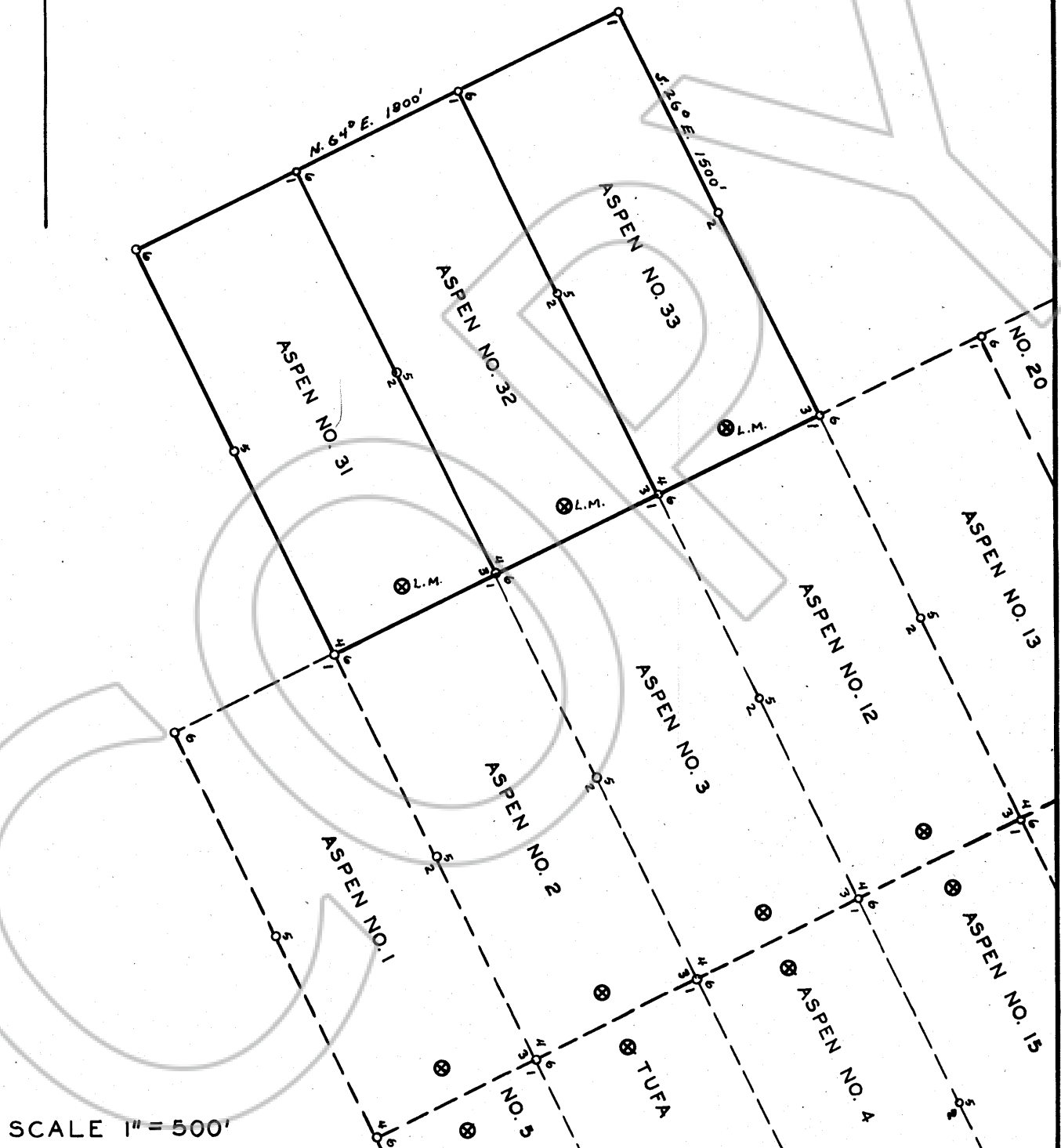


TRUE NORTH



SCALE 1" = 500'

MAP OF NEW LODE CLAIMS ASPEN NO. 31, 32, &amp; 33.

BUCKHORN MINING DIST., EUREKA CO., NEVADA

LOCATED 8-17-73 BY BUCKHORN MINES CO., CARLIN, NEV.

LOCATED CONTIGUOUS TO EARLIER ASPEN CLAIMS SHOWN ON BUCKHORN LODE CLAIM MAP, DOCUMENT NO. 56675 OF EUREKA COUNTY RECORDS.

FIELD SURVEY AND MAP PREPARATION BY E.L. STEPHENSON

1973

Filed  
 RECORDED AT THE REQUEST OF  
 E. L. Stephenson  
 on September 24, 1973  
 at 02 mins. past 8 A. M.  
 RECORDS, page 000000000000 RECORDS  
 OF EUREKA COUNTY, NEVADA  
 Recorder *E. L. Stephenson*  
 No. 57732 Fee \$ 45.00