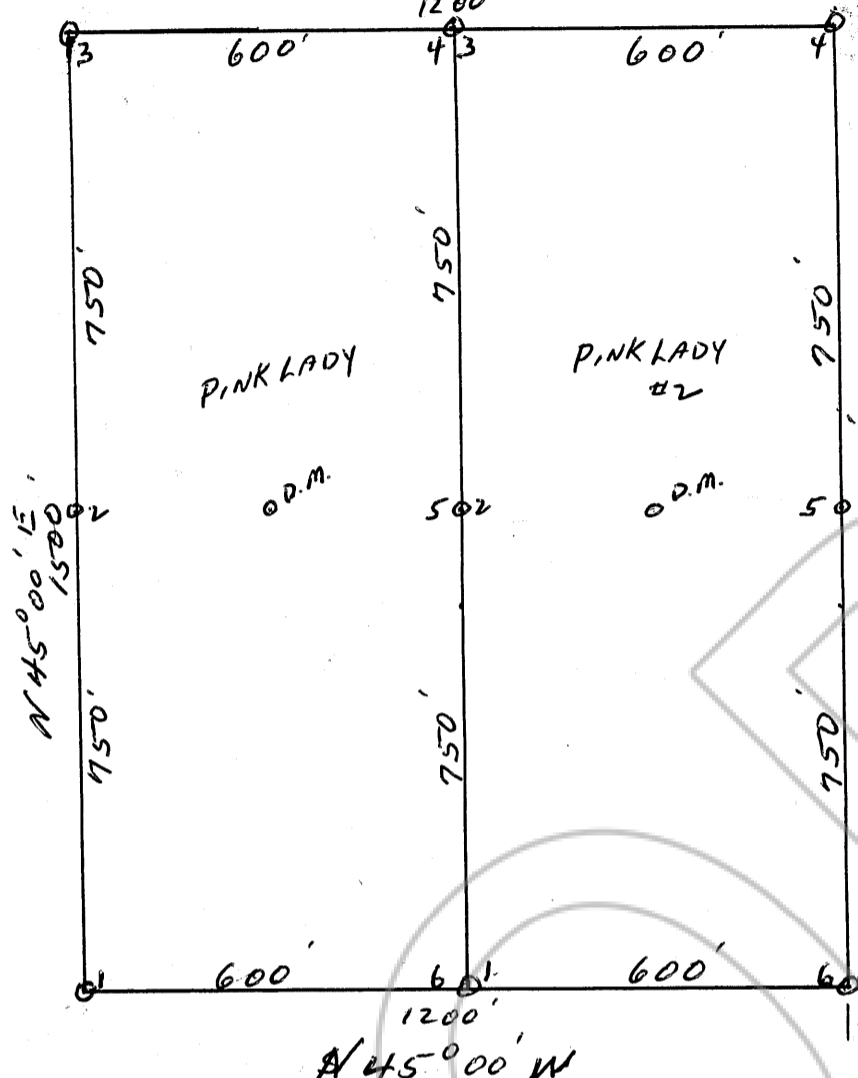


SCALE 1" = 300'

S 45° 00' E
1200'



PINK LADY

O.D.M.

PINK LADY #2

O.D.M.

N 45° 00' W

LOCATED IN CORTÉZ MINING DISTRICT
 T-27-N R-48-E
 SEC-35 + 26 (APPROX) UNSURVEYED AREA.
 EUREKA COUNTY, NEVADA.
 CORTÉZ QUAD MAP. 15 MINUTE SERIES 1938.

LOCATED BY LOUIE SOMES
 OCT-24 - 1973
 CRESCENT VALLEY, NEVADA.
 89821

4750

CORNER #6
BLACK LADY

Filed
 RECORDED AT THE REQUEST OF
 Harry Pelley
 on October 25, 1973
 at 55 mins. past 4 P M
 in Book _____ of OFFICIAL
 RECORDS
 OF EUREKA COUNTY, NEVADA
 William A. DeTasli
 Recorder
 File No. 57806 Fee \$30.00
 File No. 57806