

R 53 E

EUREKA
ELKO

N 85°00'00"E 4200.0'

UM



TRUE NORTH
SCALE: 1"=500'

NO.13 NO.11 NO.9 NO.7 NO.5 NO.3 NO.1

NO.14 NO.12 NO.10 NO.8 NO.6 NO.4 NO.2

NO.27 NO.25 NO.23 NO.21 NO.19 NO.17 NO.15

NO.28 NO.26 NO.24 NO.22 NO.20 NO.18 NO.16

NO.41 NO.39 NO.37 NO.35 NO.33 NO.31 NO.29

NO.42 NO.40 NO.38 NO.36 NO.34 NO.32 NO.30

NO.46 NO.45 NO.44 NO.43 NO.53 NO.52 NO.51

NO.48 NO.47

NO.50 NO.49

S 05°00'00"E 12000.0'

N 05°00'00"W 13500.0'

S 85°00'00"W 1800.0'

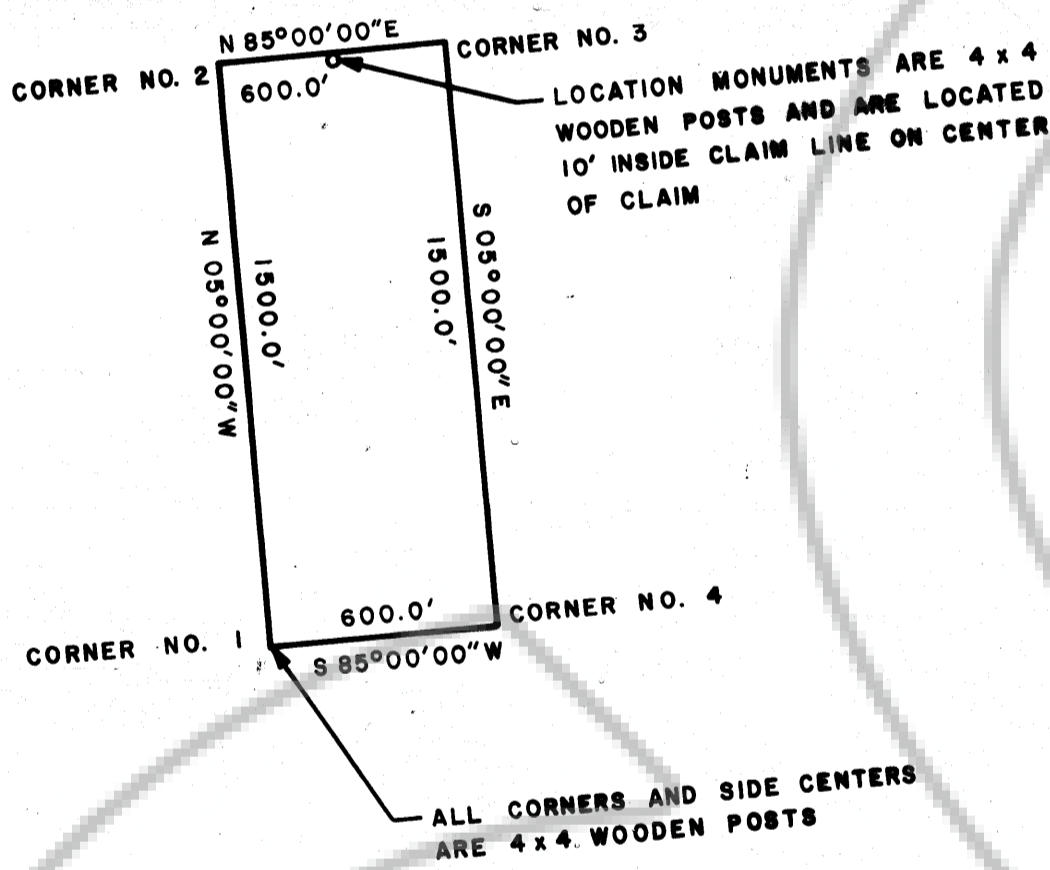
N 05°00'00"W 1500.0'

S 85°00'00"W 1200.0'

T 27 N
T 26 N

EUREKA COUNTY
ELKO COUNTY

APPROXIMATE
BOUNDARY



NW CORNER OF UM NO. 48
BEARS N 01°00'00"W 525.0'
FROM THE SW CORNER OF
SEC. 32, T27N, R53E

UM CLAIM GROUP NUMBERS 1 THRU 55

LODE CLAIMS
T 27 N, R 53 E, SEC. 19, 20, 29, 30, 31 AND 32
T 26 N, R 53 E, SEC. 5
UNION MINING DISTRICT
ELKO AND EUREKA COUNTIES, NEVADA

NEVADA MINERALS EXPLORATION LTD.
4155 E. JEWEL AVE.
ROOM NO. 514
DENVER, COLORADO

DATES LOCATED
NO. 1 THRU 14 SEPT. 12, 1973
NO. 15 THRU 28 SEPT. 13, 1973
NO. 29 THRU 42 SEPT. 14, 1973
NO. 43 THRU 50 SEPT. 15, 1973
NO. 51 THRU 55 SEPT. 29, 1973

Filed
AT THE REQUEST OF
Nevada Minerals Exploration Ltd.
on November 20, 1973
at 4:45 mins. past 10:11 A.M.
RECORDS
OF EUREKA COUNTY, NEVADA
Recorder
5848 345 88
File # 58048