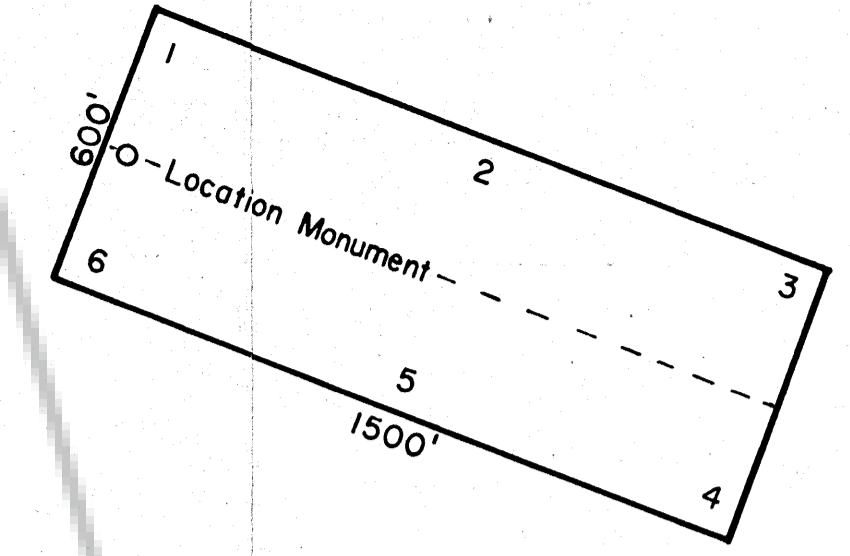


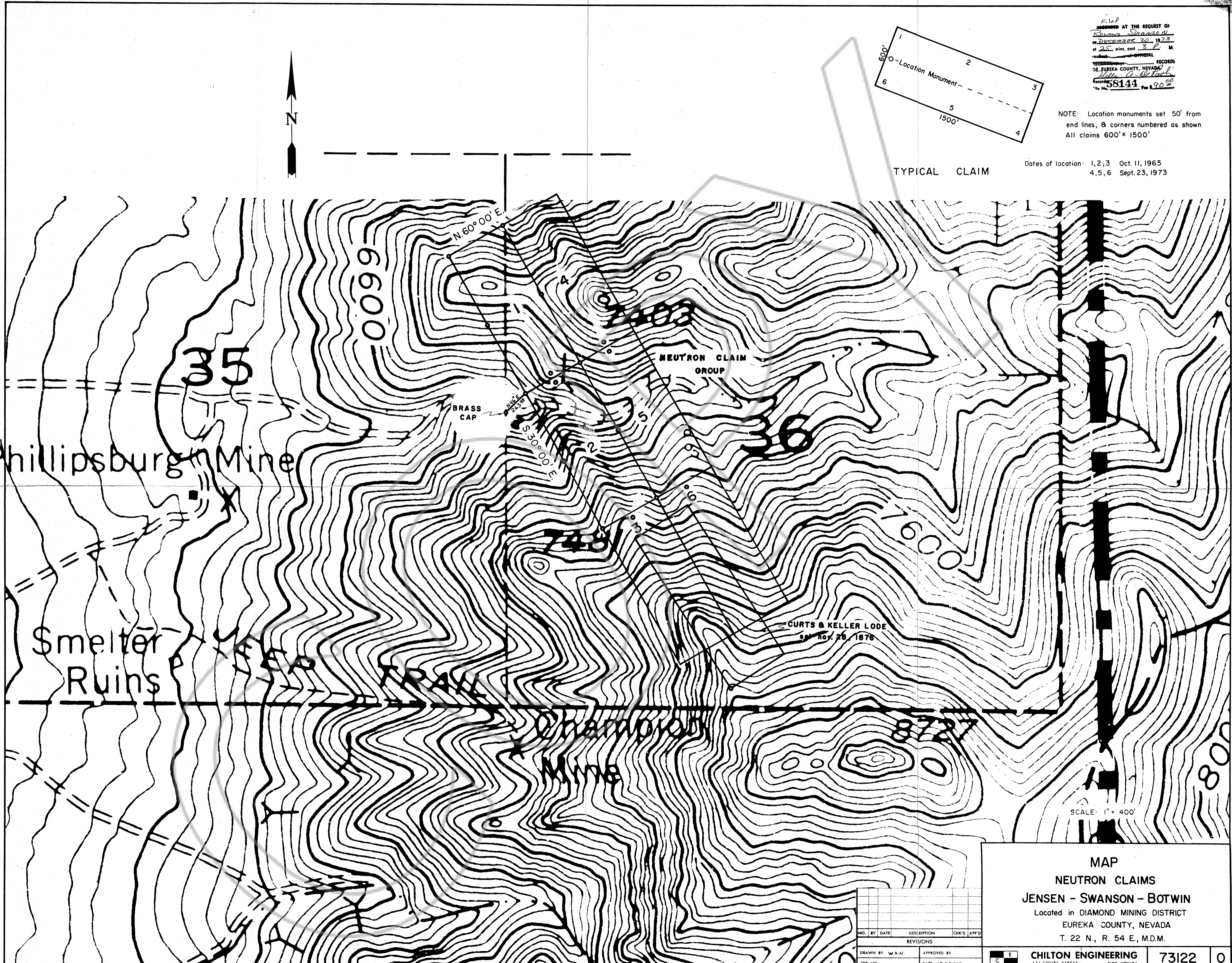
RECORDED AT THE REQUEST OF
Jensen Swanson
 on December 20, 1973
 at 2:25 min. past 3 P. M.
 RECORDS
 OF EUREKA COUNTY, NEVADA
W. J. N.
 Record No. 58144
 Fee \$ 90.00

NOTE: Location monuments set 50' from
 end lines, & corners numbered as shown
 All claims 600' x 1500'

Dates of location: 1, 2, 3 Oct. 11, 1965
 4, 5, 6 Sept. 23, 1973



TYPICAL CLAIM



CURTS & KELLER LODE
 SM. NO. 26, 1876

SCALE: 1" = 400'

MAP
 NEUTRON CLAIMS
 JENSEN - SWANSON - BOTWIN
 Located in DIAMOND MINING DISTRICT
 EUREKA COUNTY, NEVADA
 T. 22 N., R. 54 E., M.D.M.

NO.	BY	DATE	DESCRIPTION	CHK'D	APP'D
REVISIONS					
DRAWN BY		W.J.N.			
APPROVED BY		DATE 12/19/73			
JOB NO.					

CHILTON ENGINEERING
 421 COURT STREET
 EUREKA, NEVADA

73122 **0**