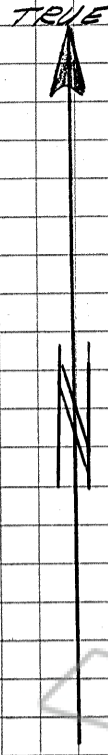


58415

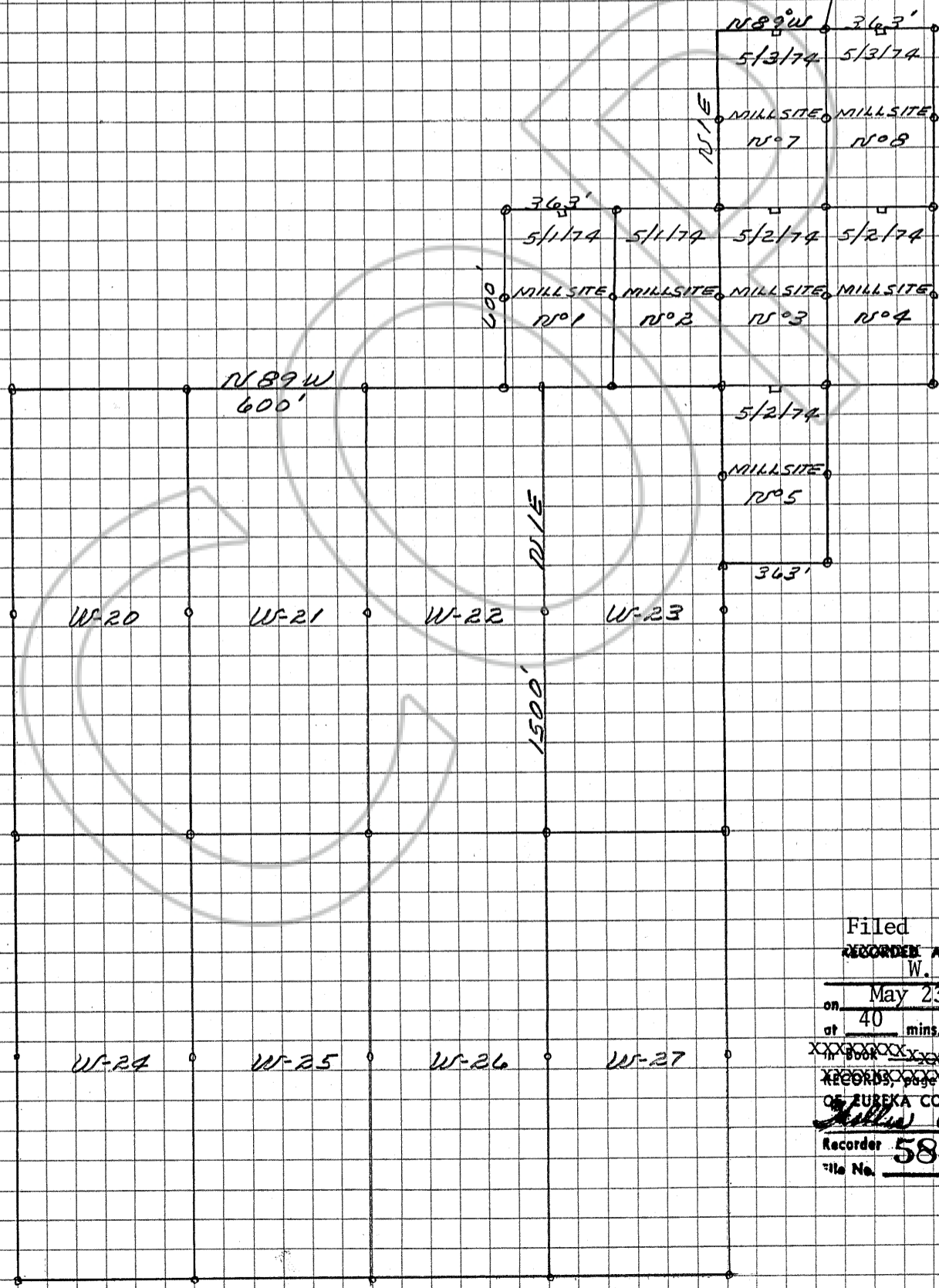
T.19N.
T.18N.

R.36 R.53E.
MOBYL N.

IDAHO MINING CORP.
MILLSITE CLAIMS
LOCATED IN SECRET CANYON
EUREKA MINING DISTRICT
UNSURVEYED AREA
EUREKA COUNTY, NEVADA



SCALE 1" = 500'
□ = LOCATION MON
○ = CLAIM CORNERS



Filed
RECORDED AT THE REQUEST OF
W. L. Wilson
on May 23 1974
at 40 mins. past 10 A. M.
in Book XXXXXX OFFICIAL
RECORDS, page XXXXXX, RECORDS
OF EUREKA COUNTY, NEVADA
William A. DeLoake
Recorder **58415**
File No. Fee \$ 105.00