

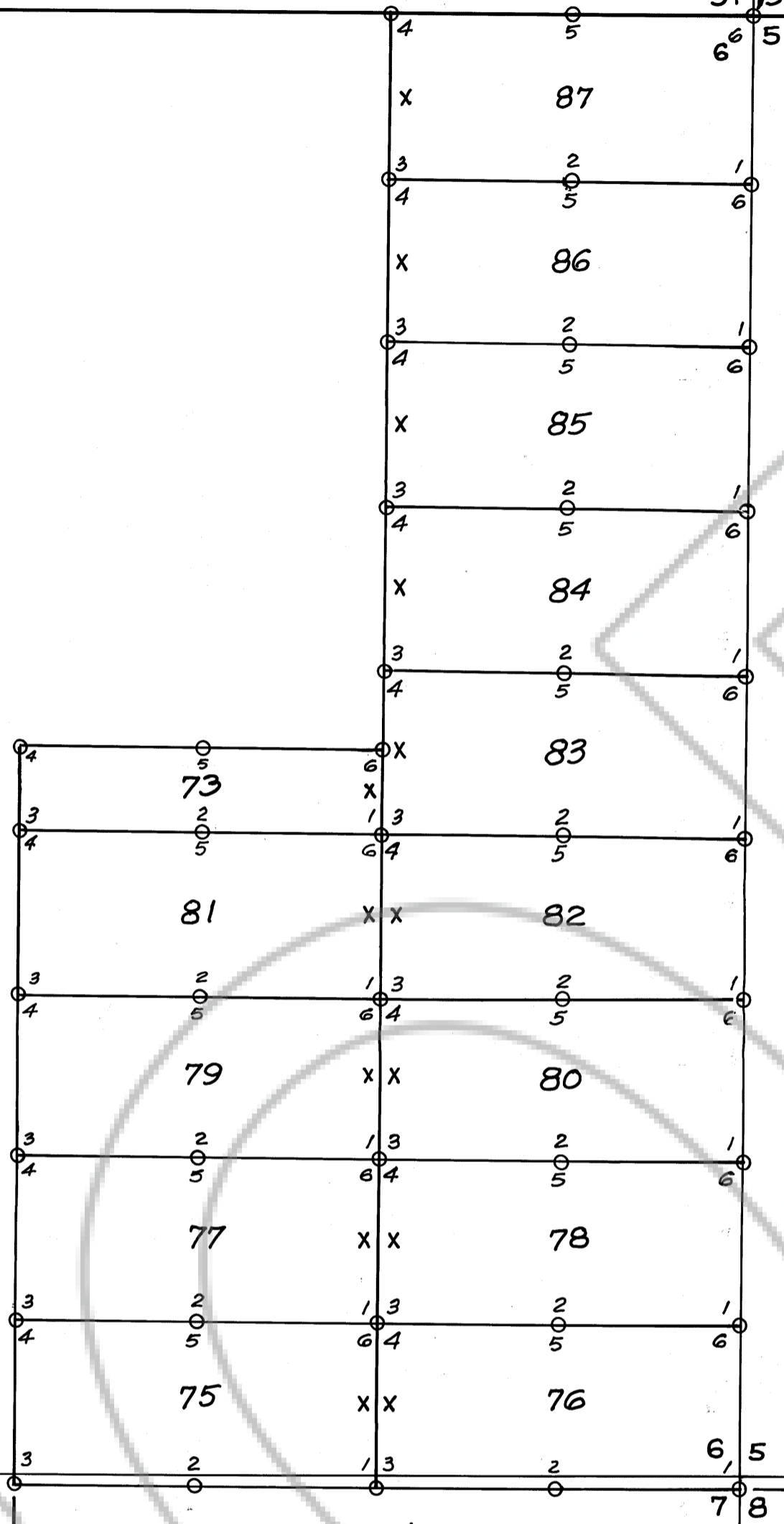
36

58638

SECTION CORNER
USGS BM LOCATED.
SURVEY POINT OF
BEGINNING.

31
6

31 32
6 5



36
2

6
7

N 0° E 2640'



TRUE
NORTH

MAP OF THE SUSIE
 No. 73 Thru 87 Group of Lode Claims.
 T 34 N R 51 E EUREKA COUNTY, NEVADA.

LOCATOR: ROBERT L. AKRIGHT
 6073 W. 44 TH. AVE.
 WHEAT RIDGE, COLO. 80033
 LOCATED: SEE BELOW, 1974.

SCALE 1 INCH EQUALS 500 FEET.
 NOTE: ALL CORNERS ARE 4x4 WOODEN POST
SUSIE 83, 84, 85, 86 & 87 LOCATED MAY 18, 1974.
SUSIE 73, 75, 76, 77, 78, 79, 80, 81 & 82 LOCATED
MAY 19, 1974.

Filed
 AT THE REQUEST OF
 Robert L. Akright
 on June 4, 1974
 at 55 mins. past 3 P. M.
 of EUREKA COUNTY, NEVADA
 Recorder
 No. 58638 210⁰⁰