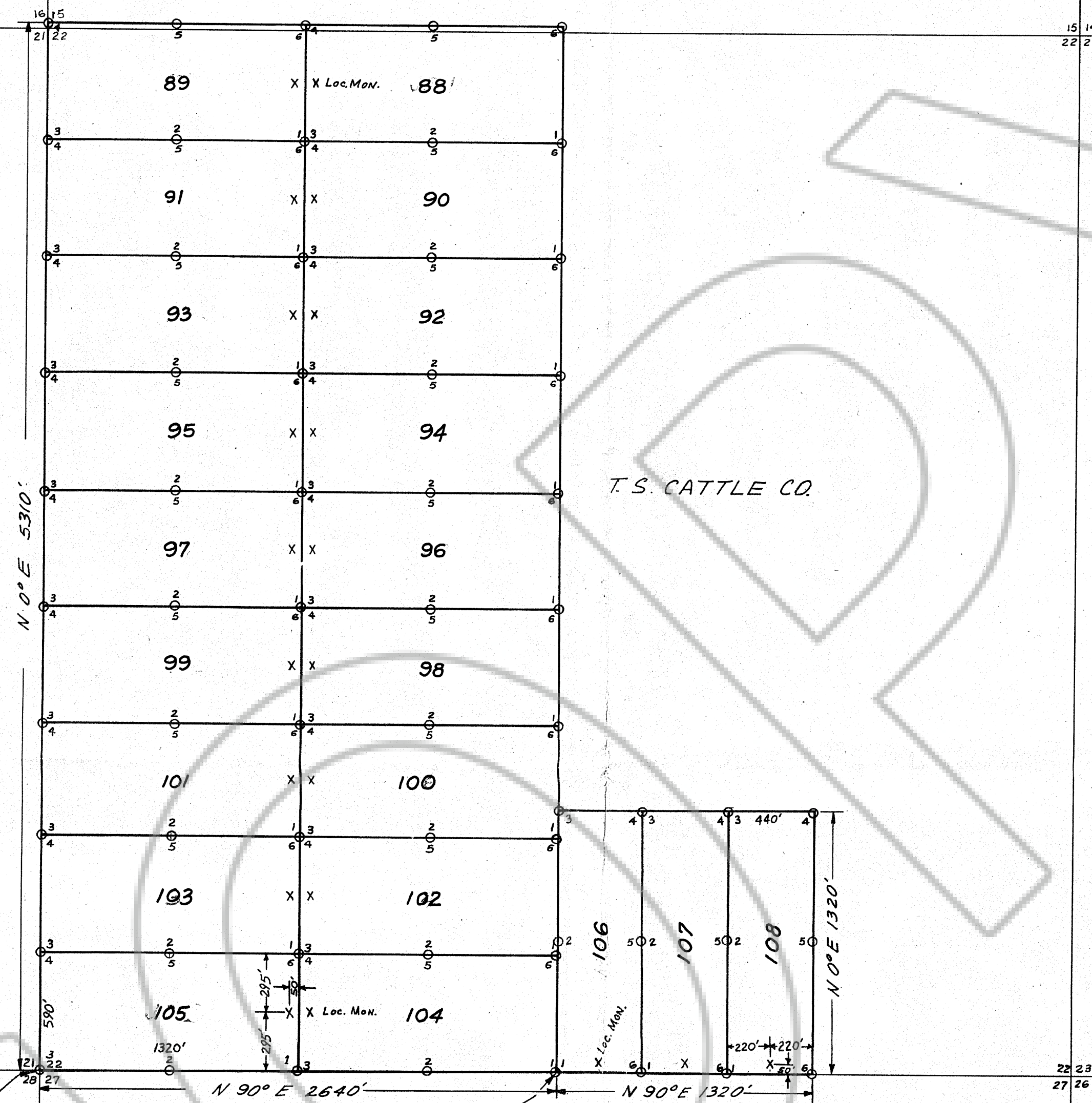


T. S.

58639

T. S.

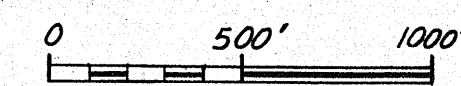


Section Corner Located 21 22 28 27  
Survey Point of Beginning

1/4 Corner of Section (located in field)

T. S.

S. P. R. R.



TRUE NORTH

MAP OF THE SUSIE  
 No. 88 Thru 108 Group of Lode Claims.  
 T 34N-R 51E MAGGIE CREEK MINING DISTRICT.  
 EUREKA COUNTY, NEVADA

LOCATOR: ROBERT L. AKRIGHT  
 6073 W. 44TH AVE.  
 WHEAT RIDGE, COLO. 80033

LOCATED: See below, 1974  
 SCALE 1 INCH EQUALS 500 FEET  
 NOTE: ALL CORNERS ARE 4x4 WOODEN POST  
 SUSIE 88 THRU 108 LOCATED 5/14/74

Filed AT THE REQUEST OF  
 Robert L. Akright  
 June 4 1974  
 of 55 mins. post 3 P. M.  
 RECORDS  
 OF EUREKA COUNTY, NEVADA  
 58639  
 No. 315-00