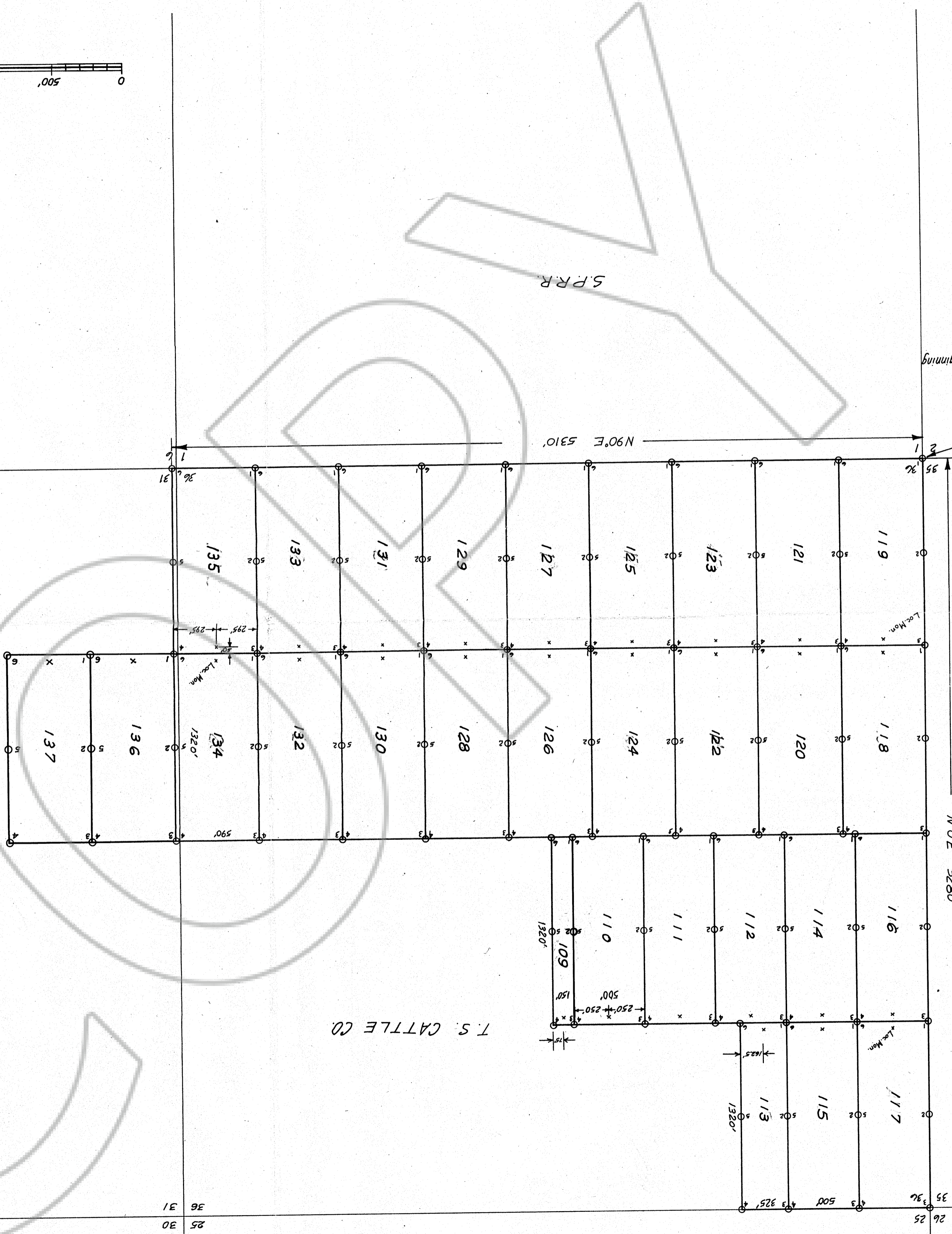
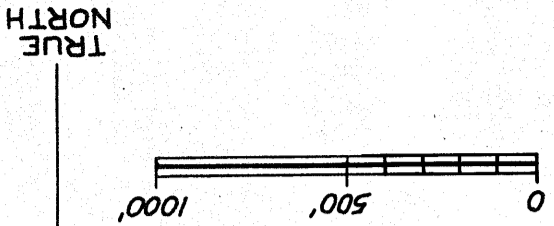


MAP OF THE SUSIE
 Nos. 2 thru 137 Group of Lode Claims.
 T34 N-R 51E
 MAGGIE CREEK MINING DISTRICT,
 EUREKA COUNTY, NEVADA
 LOCATOR: ROBERT L. AKRIGHT
 6073 W. 44TH AVE.
 WHEAT RIDGE, COLO. 80033
 LOCATED: SEE BEGON, 1974
 SCALE 1 INCH EQUALS 500 FEET
 NOTE: ALL CORNERS ARE 4x4 WOODEN POST
 SUSIE 109 THRU 135 LOCATE MAY 12, 1974
 SUSIE 136 & 137 LOCATED JUNE 3, 1974

Recorded
 58640
 435
 DE EUREKA COUNTY, NEVADA
 RECORDS
 1974
 JUNE 4
 3 P
 1974
 RECEIVED AT THE REQUEST OF
 ROBERT L. AKRIGHT



Section
 Corner 35 36
 Located 2 1
 Survey Point of Beginning

GOLD QUARRY

T. S. CATTLE CO

58640

T. S.