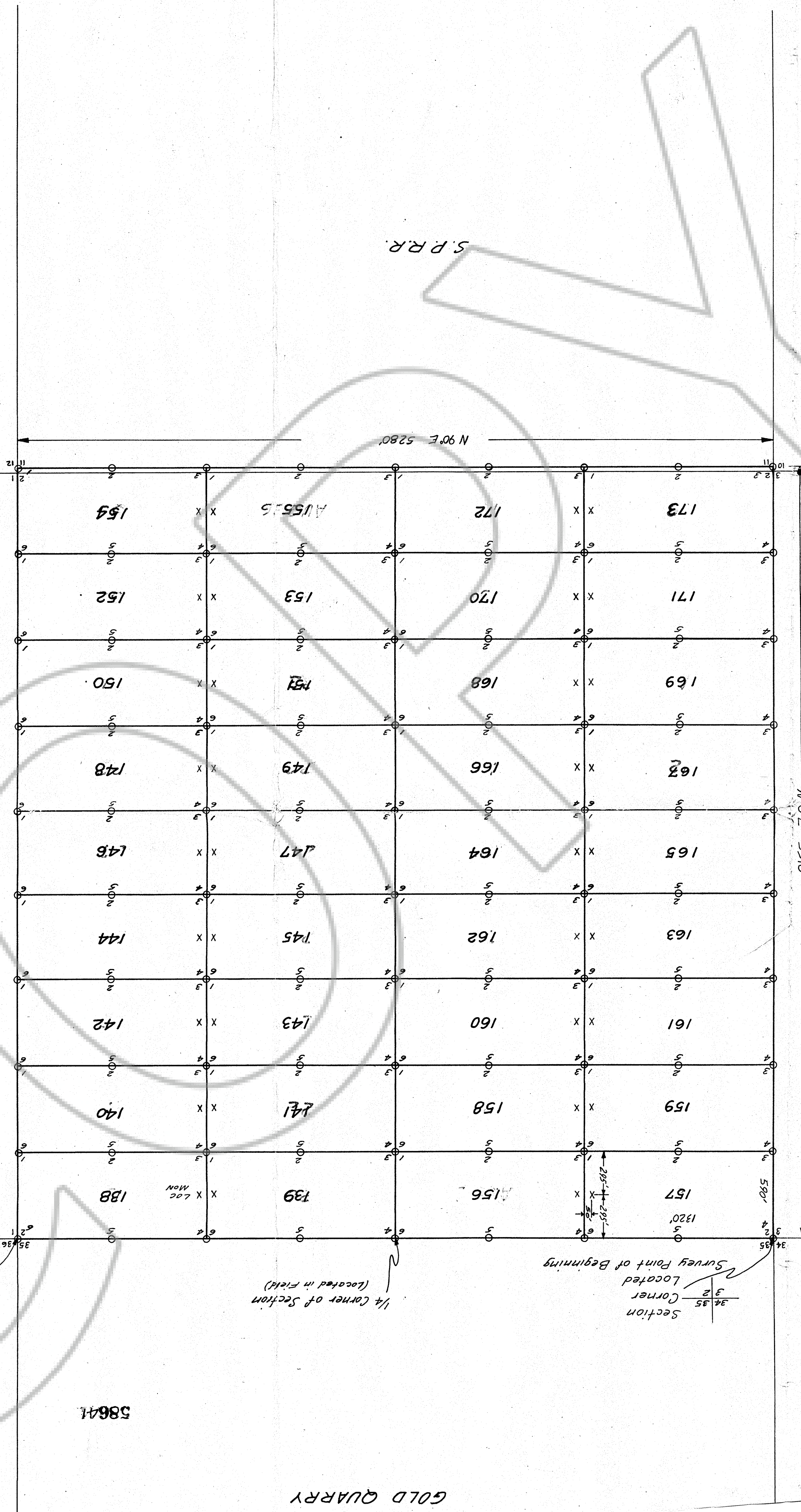
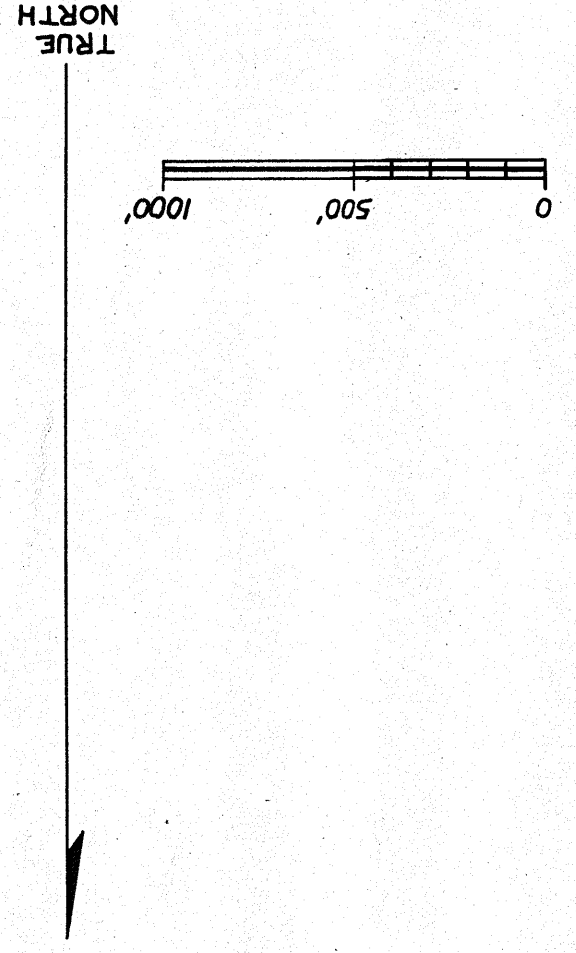


MAP OF THE  
No. 138 Thru 173 Group of Lode Claims,  
T 33N-R 51E, MAGGIE CREEK MINING DISTRICT,  
EUREKA COUNTY, NEVADA  
LOCATOR: ROBERT L. AKRIGHT  
6073 W. 44TH AVE.,  
WHEAT RIDGE, COLO. 80033  
LOCATED: See below, 1974  
SCALE: 1 INCH EQUALS 500 FEET  
NOTE: ALL CORNERS ARE 4x4 WOODEN POST  
SUSIE, 138 THRU 173 LOCATE MAP 18, 1974  
RECORDED  
EUREKA COUNTY, NEVADA  
No. 58641-570

MAP OF THE  
No. 138 Thru 173 Group of Lode Claims,  
T 33N-R 51E, MAGGIE CREEK MINING DISTRICT,  
EUREKA COUNTY, NEVADA  
LOCATOR: ROBERT L. AKRIGHT  
6073 W. 44TH AVE.,  
WHEAT RIDGE, COLO. 80033  
LOCATED: See below, 1974  
SCALE: 1 INCH EQUALS 500 FEET  
NOTE: ALL CORNERS ARE 4x4 WOODEN POST  
SUSIE, 138 THRU 173 LOCATE MAP 18, 1974  
RECORDED  
EUREKA COUNTY, NEVADA  
No. 58641-570



S.P.R.R.

S.P.R.R.

GOLD QUARRY

58641

Section 36  
Corner 1  
Located

1/4 Corner of Section  
(located in field)

Section 35  
Corner 2  
Located  
Survey Point of Beginning

580'  
1320'