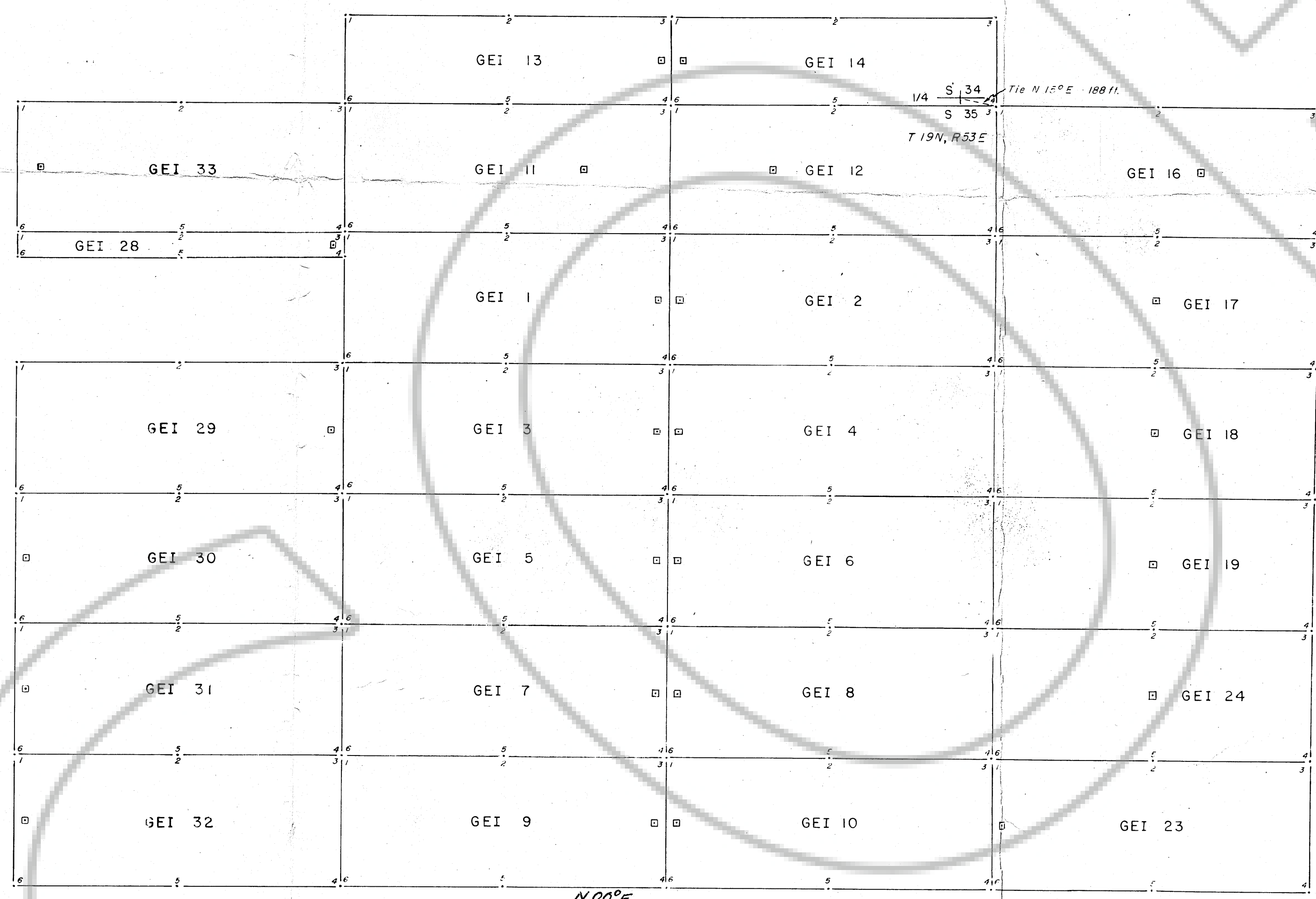


T 19 N., R 53 E.



Filed  
 AT THE REQUEST OF Dee Ann  
 on June 14, 1974, at 2 P. M.  
 EUREKA COUNTY, NEVADA Dee Ann RECORDS OF  
 File No. 58714 Fee \$ 390

MAP OF THE GEI CLAIM GROUP  
 Eureka Mining District  
 Located March 24-June 12, 1974

• Claim Corner Post  
 □ Location Monument

SCALE: 1" = 400'

GALLI EXPLORATION, INC.  
 100 Washington St.  
 Reno, NV. 89503