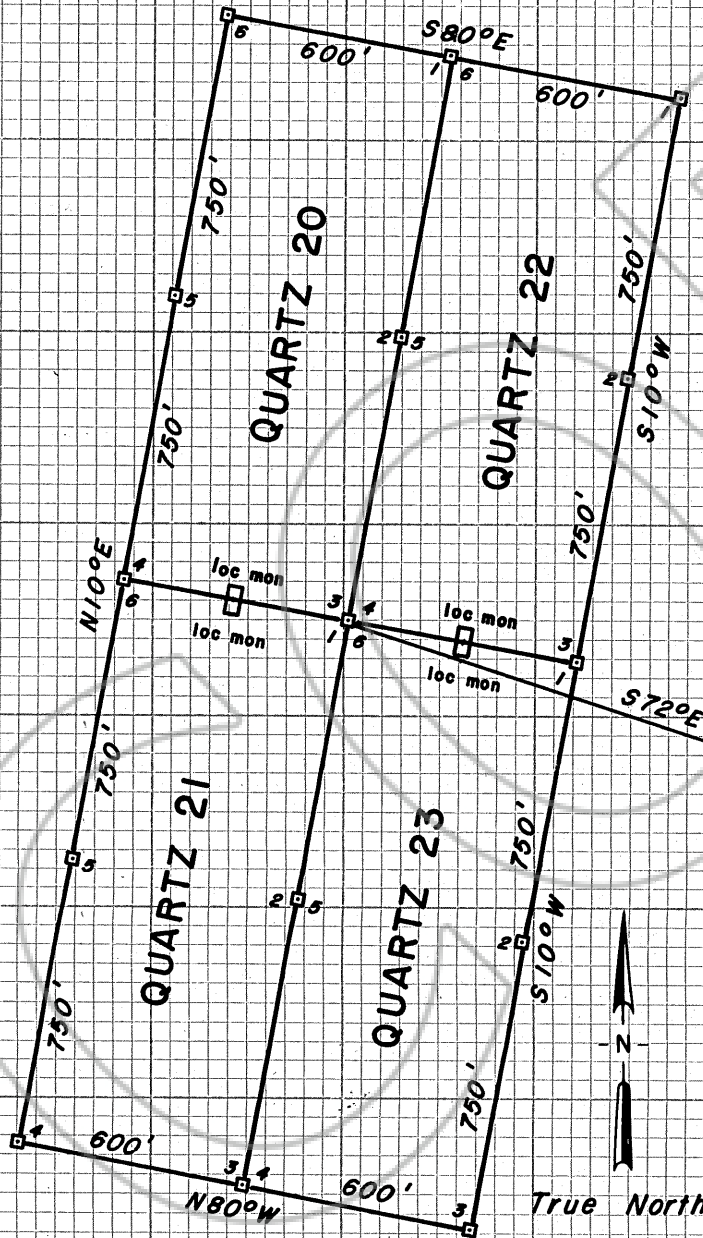


RELOCATION MAP of the QUARTZ 20, QUARTZ 21, QUARTZ 22, QUARTZ 23
LODE MINING CLAIMS

These Lode Mining Claims are located in unsurveyed T23½N, R50E and T24N, R50E, Willow Creek Mining District, Eureka County, Nevada.

The QUARTZ GROUP of Claims were relocated August 3, 1974 by Idaho Mining Corporation. The Claim Group is tied within a general survey of the area to a Claim Marker at USGS Point 7437.

All corners are 4"x4" wood posts. The Claim patterns with courses and distances follows:



This map is filed with and made a part of the Certificates of Location of the said Claims.

Dated this 4th Day of September, 1974

Idaho Mining Corporation, Locator
 P.O. Box 2183
 Grand Junction, Colorado
 81501

by *Ward Carithers*
 Ward Carithers, Agent

S.E. Cor T24, R50E

Claim Location Marker
 USGS Point 7437

Filed
 RECORDED AT THE REQUEST OF
Ward Carithers
 on September 9, 1974
 at 13 mins. past 11 A.M.
 in Book _____ of OFFICIAL
 RECORDS, page _____ RECORDS
 OF EUREKA COUNTY, NEVADA.
Sharon A. DeLoe
 Recorder
 No. 59243 Fee \$ 80.00

