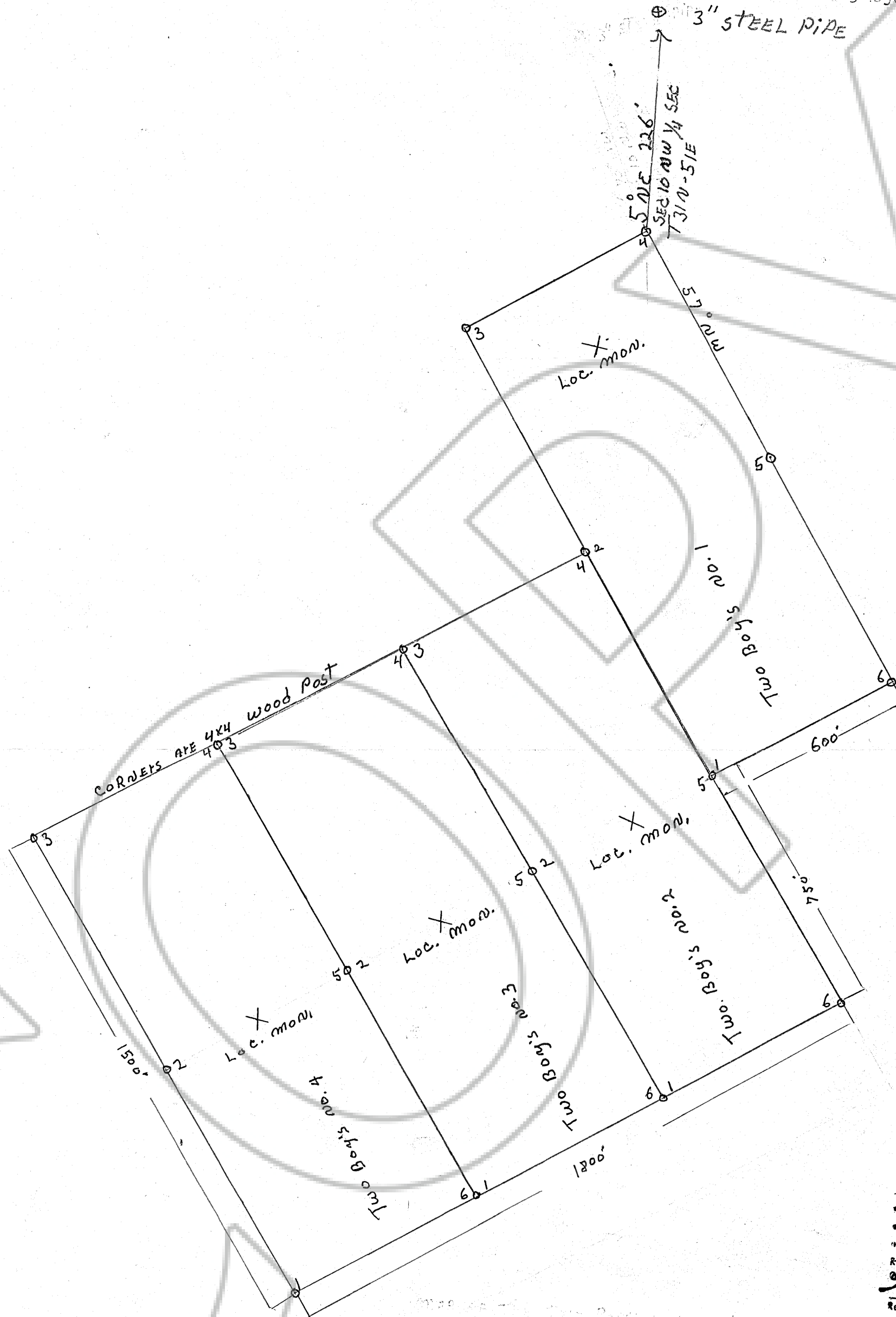


59488

LOCATION MARKER

LOCATION MARKER IS 500' SW CORNER FROM
SP. RAIL ROAD PLAYSIDE CANYON
CROSS OVER UNDER THE R.R.
BRIDGE

NORTH
↑
SCALE
1" = 300'



Filed
 RECORDED AT THE REQUEST OF
 Dean Stitzel
 on November 18, 1974
 at 05 mins. past 1 P. M.
 in Book _____ of OFFICIAL
 RECORDS page _____ RECORDS
 OF EUREKA COUNTY, NEVADA
 William C. McFarlin
 Recorder
 File No. 59488 Fee \$60.00

MAP OF THE Two Boy's no. 1-4 lode CLAIM GROUP.
 SAFFOLD Mining District
 EUREKA COUNTY NEVADA

By Wayne Dillon P.O. Box 443 CARLIN NEVADA
 Nov. 14 1974

File No. 59488