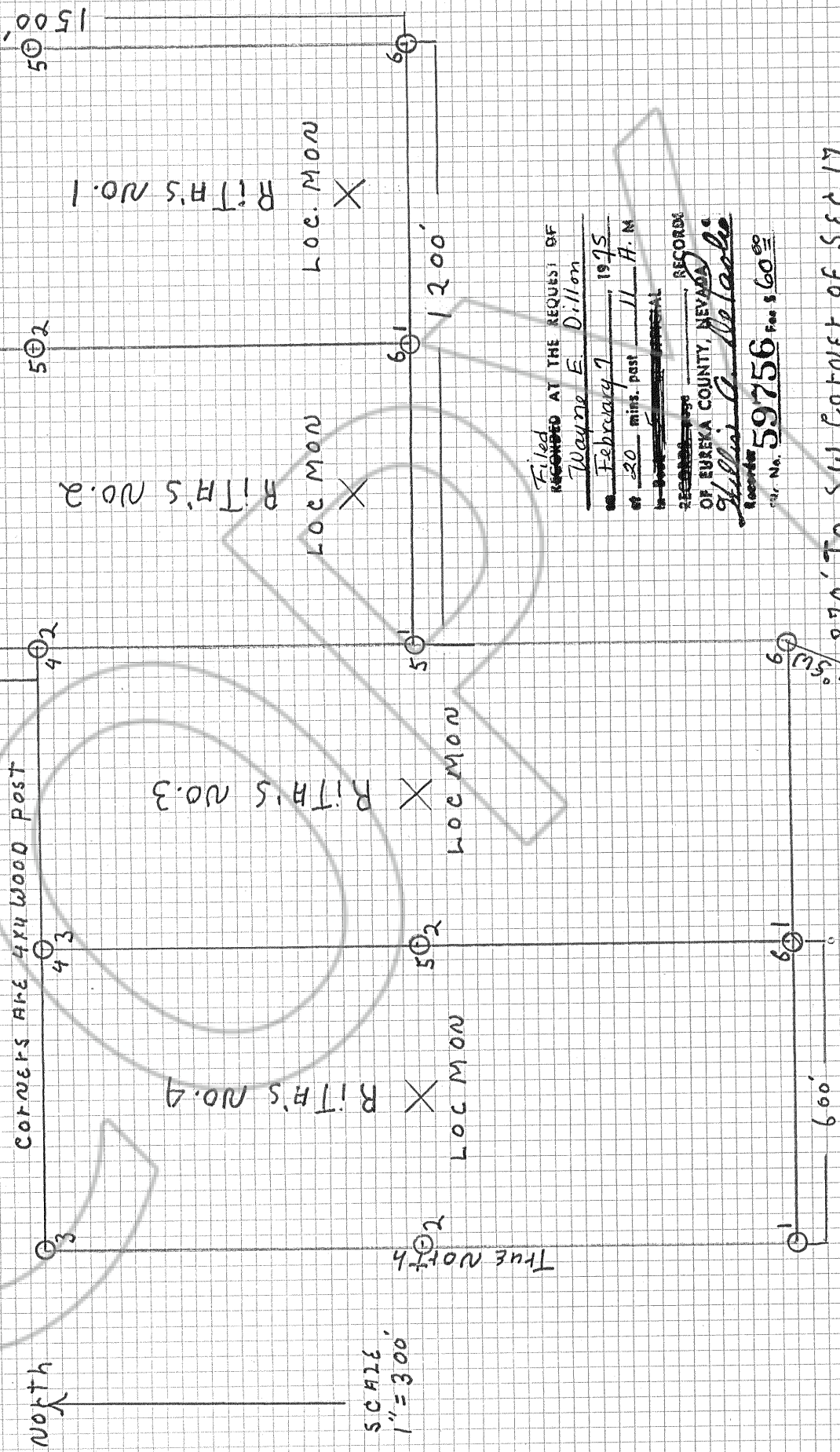


MAP OF RITA'S NO. 1-4 LODE CLAIM GROUP
 SAFFORD MINING DISTRICT EUREKA COUNTY NEV.
 TOWN SHIP 31 NORTH RANGE 51 EAST OF THE
 MOUNT DIABLO MERIDIAN NEV.
 LOCATED BY WAYNE DILLON P.O. BOX 943 CALLIN NEV.
 AND DEAN STITZEL PINE VALLEY NEV
 ON FEBRUARY 4 1975



Filed
 RECORDED AT THE REQUEST OF
 Wayne E. Dillon
 on February 7 1975
 at 20 mins. past 11 A. M.
 in Book 5
 RECORDS
 OF EUREKA COUNTY, NEVADA
 Gillis C. McLaughlin
 Recorder
 Vol. No. 59756 Pgs. 600

870' To SW CORNER OF SEC. 17
 T31N R 51E.

MAP BY WAYNE DILLON