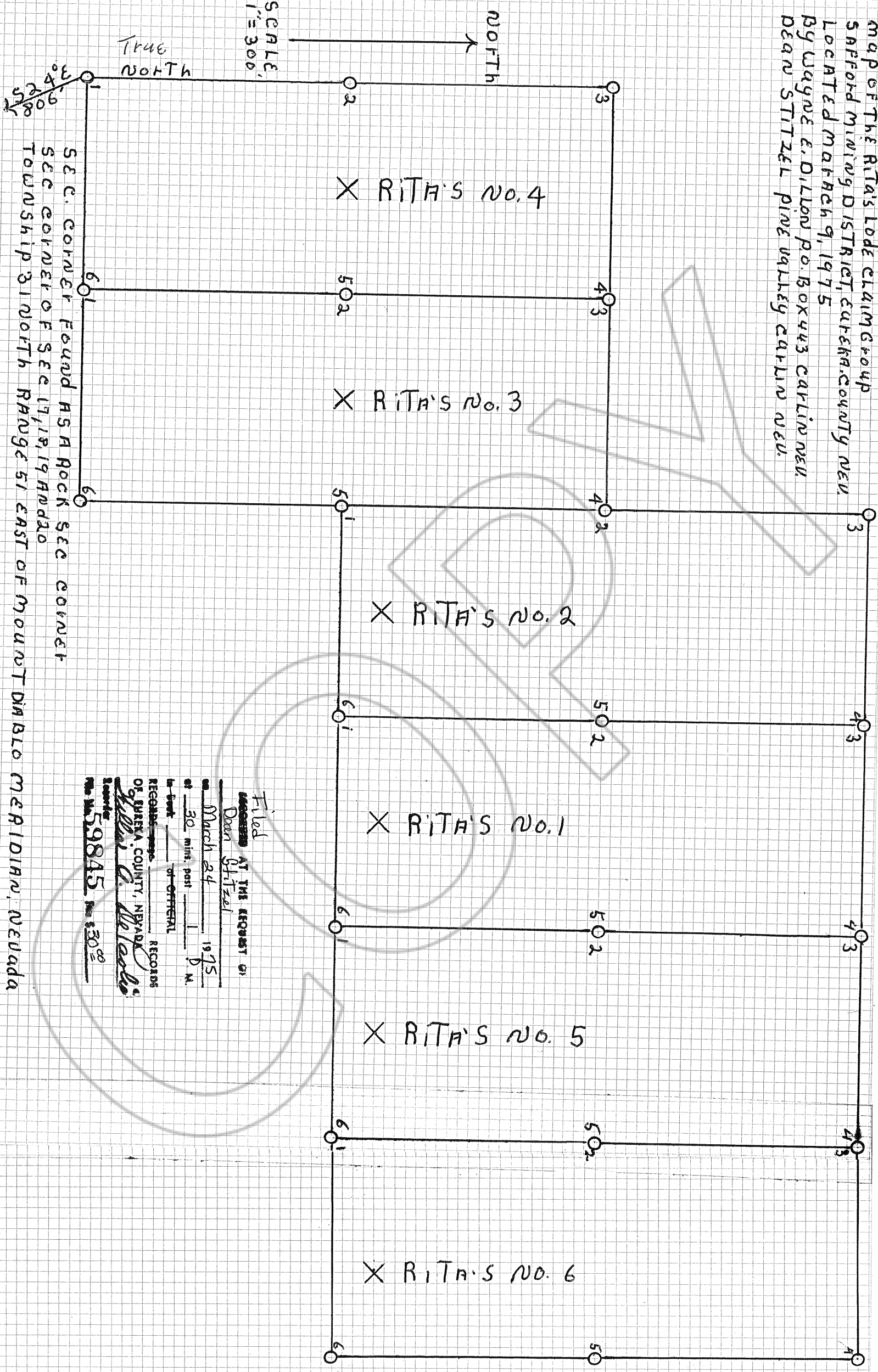


MAP OF THE RITA'S LODE CLAIM GROUP
 SAFFORD MINING DISTRICT, ESSEX COUNTY NEV.
 LOCATED MARCH 9, 1975
 BY WAYNE E. DILLON P.O. BOX 443 CARLIN NEV.
 DEAN STITZEL PINE VALLEY CARLIN NEV.



X RITA'S NO. 4

X RITA'S NO. 3

X RITA'S NO. 2

X RITA'S NO. 1

X RITA'S NO. 5

X RITA'S NO. 6

SEC. CORNER FOUND AS A ROCK SEE CORNER
 SEE CORNER OF SEC 17, 18, 19 AND 20
 TOWNSHIP 31 NORTH RANGE 51 EAST OF MOUNT DIABLO MERIDIAN, NEVADA

Filed
 AT THE REQUEST OF
 Dean Stitzel
 on March 24, 1975
 at 30 mins. past 1 P. M.
 by Book _____ of OFFICIAL RECORDS
 of ESSEX COUNTY, NEVADA
 Wayne E. Dillon
 Recorder
 No. 59845 Fee \$30.00