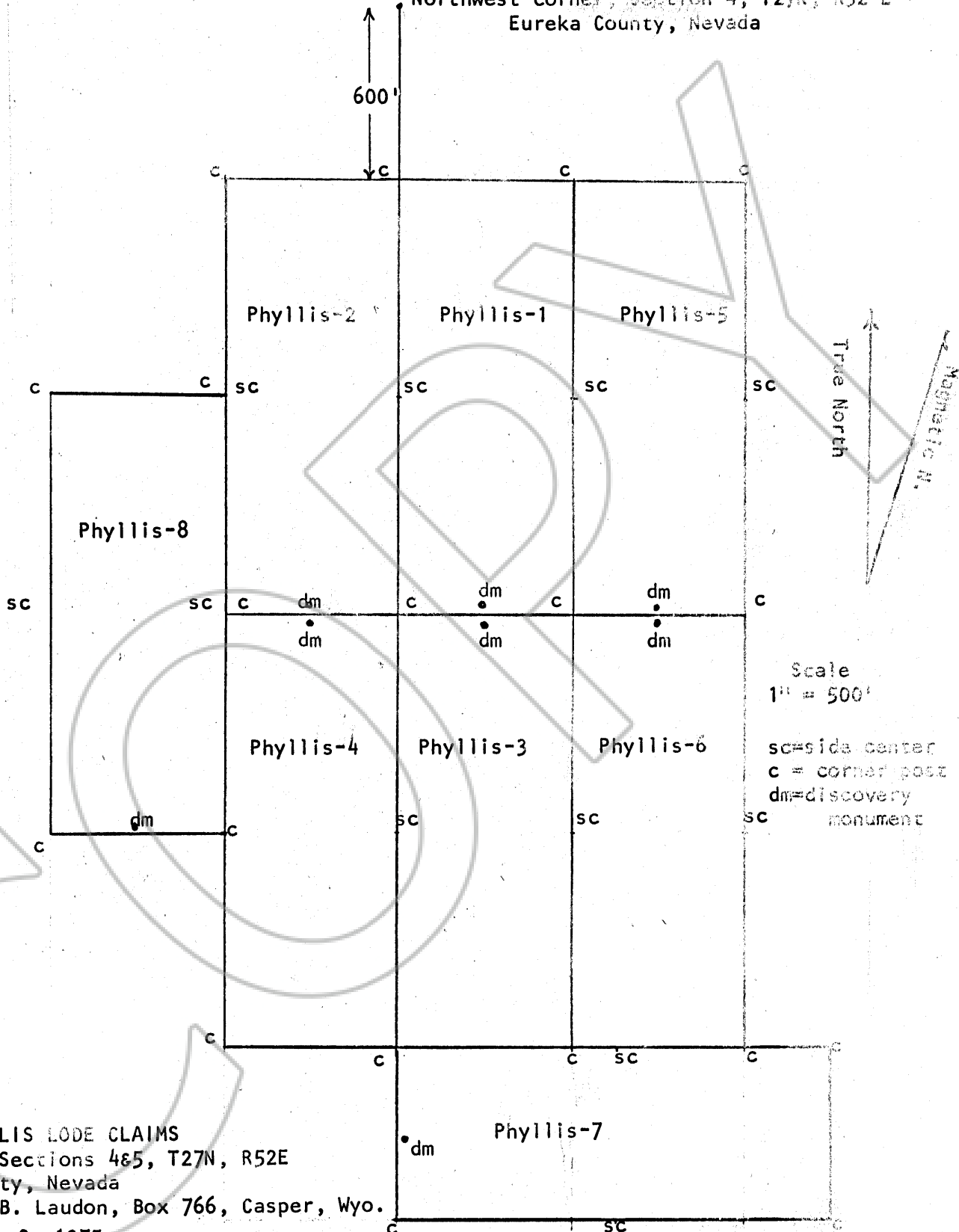


Northwest corner, Section 4, T27N, R52 E
Eureka County, Nevada



Scale
1" = 500'

sc=side center
c = corner post
dm=discovery
monument

MAP OF PHYLLIS LODE CLAIMS
Located in Sections 4&5, T27N, R52E
Eureka County, Nevada
by Richard B. Laudon, Box 766, Casper, Wyo.

September 2, 1975
Each claim is 600' in width and 1500' in length.
RECORDED AT THE REQUEST OF Richard B. Laudon
on September 11, 1975, at 51 mins. past 10 A.M. In
Book _____ of ~~OFFICIAL RECORDS~~, page _____, RECORDS OF
EUREKA COUNTY, NEVADA. WILLIS A. DePAOLI Recorder
File No. 60322 Fee \$ 120.00