

DRAWING NUMBER
60465

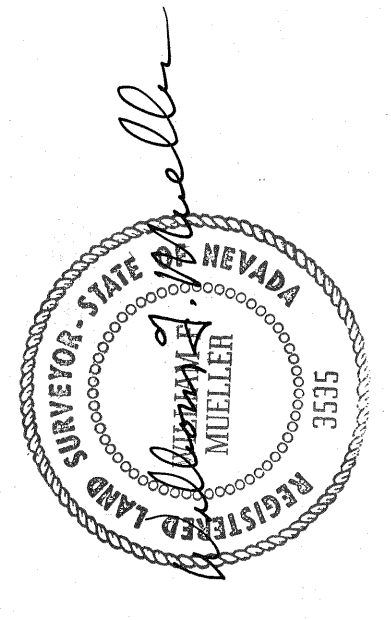
DRAWING NUMBER
60465

DRAWING NUMBER
60465

DRAWING NUMBER
T31R 49E Sec 25

SURVEYOR'S CERTIFICATE

I, William F. Mueller, Registered Land Surveyor No. 3535, do hereby certify that this is a true and accurate map of land surveyed under my supervision and direction on the 4th day of August, 1975, and that this Survey is fully and correctly designated thereon.



SPECIAL NOTE

An extensive search for section and 1/4 corners in the interior of T.31N., R.49E., M.D.B.&M. revealed no remaining evidence of original corners in the vicinity of Section 25. There is, however, evidence of a range fire in the area, and it is reasonable to assume that all remaining evidence of the original corners was destroyed at that time.
This map was erroneously filed in Lander County (file no. 81563) and was subsequently filed, after corrections, in Eureka County.

BASIS OF BEARINGS

The 1/4 section line between the S.E. corner and the E. 1/4 corner of Section 25, T.31N., R.49E., M.D.B.&M. as noted on the General Land Office plat of T.31N., R.50E., M.D.B.&M. dated Oct. 18, 1921 as being N. 0° 30' E.

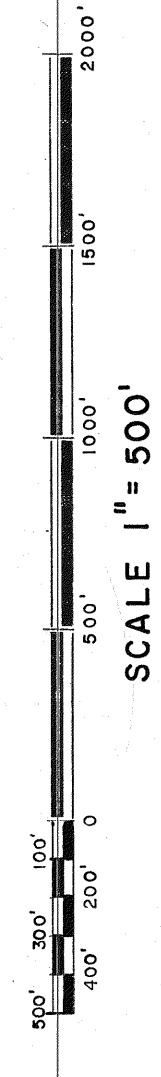
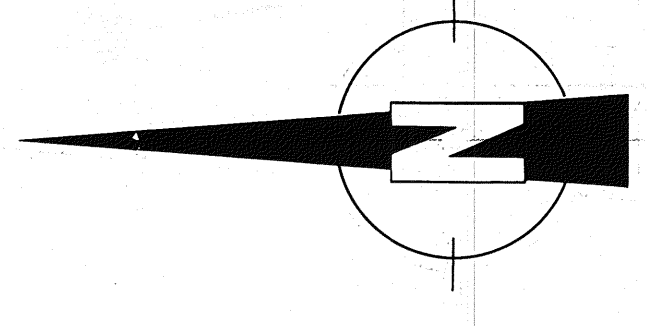
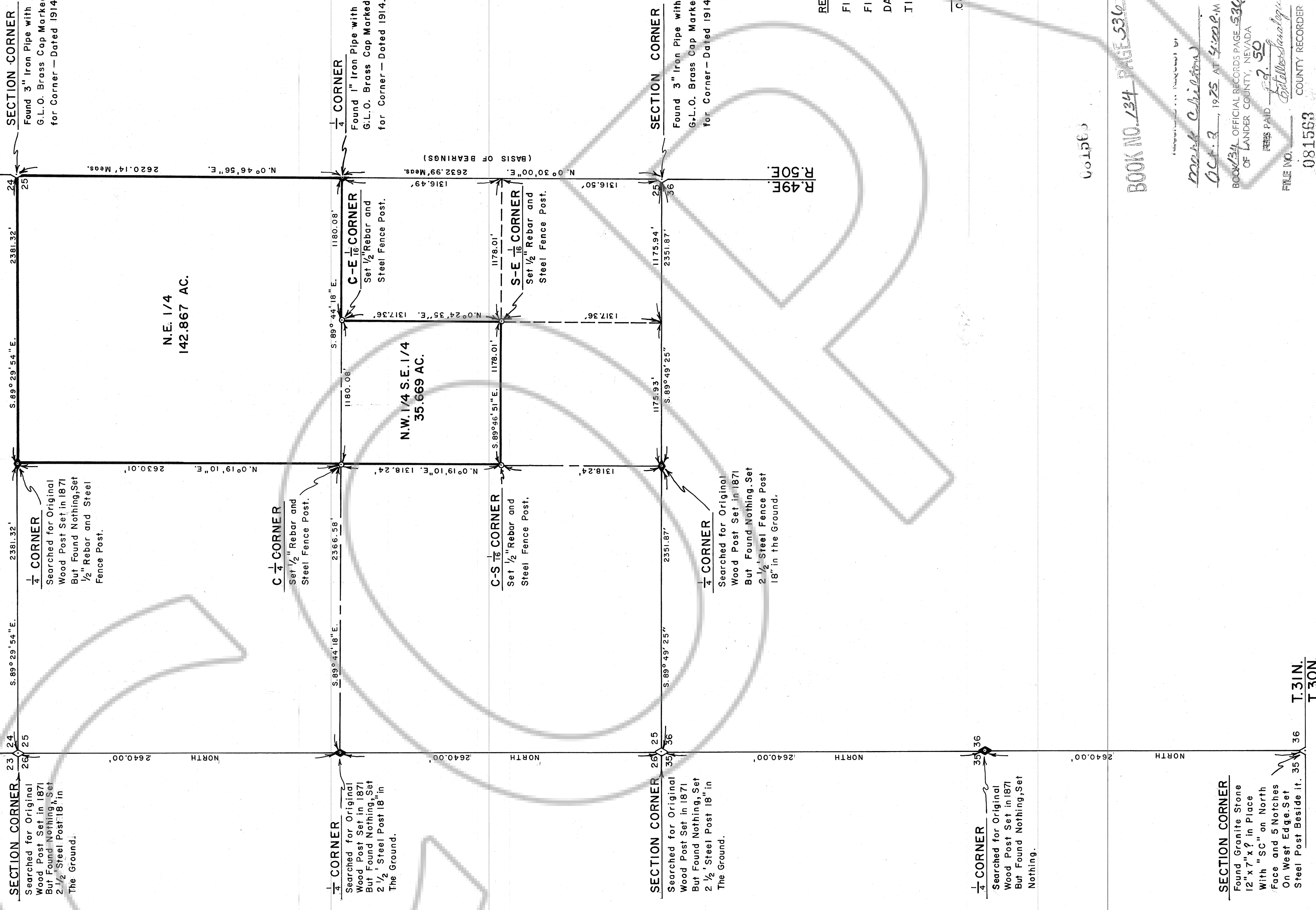
RECORDING DATA (Lander County)

FILE NO. 81563
FILED AT THE REQUEST OF CHILTON ENGINEERING
DATE Oct. 2, 1975
TIME 4:00 PM
William F. Mueller
County Recorder, Lander County, Nevada

RECORDING DATA (Eureka County)

FILE NO. 60465
FILED AT THE REQUEST OF CHILTON ENGINEERING
DATE OCTOBER 20, 1975
TIME 11:30 AM
William F. Mueller
County Recorder, Eureka County, Nevada

T. 31N., R. 49E., M.D.B.&M.



RECORD OF SURVEY

OF THE NE 1/4 AND NW 1/4 SE 1/4 OF SEC. 25
IN TOWNSHIP 31 NORTH, RANGE 49 EAST, M.D.B.&M.
NEAR Beowawe, Nevada
Eureka County
FOR COLLIER B. LENTZ

FILE NO. 081563
DRAWN BY MLW
APPROVED BY *W.F. Mueller*
DATE 9/75

CHILTON ENGINEERING
4211 COURT STREET
RENO, NEVADA
75081

NO.	BY DATE	DESCRIPTION	CHK'D APP'D
1	10/20/75	Recorded in Eureka Co.	

BOOK NO. 234 PAGE 536

Marked Chilton
Oct. 3, 1975 AT 4:00 P.M.
OFFICIAL RECORDS PAGE 536
OF LAND COUNTY, NEVADA
FEES PAID \$ 50
William F. Mueller
COUNTY RECORDER

T. 31N.
T. 30N.

SECTION CORNER
Found Granite Stone
12" x 7" x 7" in Place
With "SC" on North
Face and 5 Notches
On West Edge. Set
Steel Post Beside it. 35

1/4 CORNER
Searched for Original
Wood Post Set in 1871
But Found Nothing. Set
2 1/2" Steel Fence Post
18" in the Ground.

SECTION CORNER
Searched for Original
Wood Post Set in 1871
But Found Nothing. Set
2 1/2" Steel Post 18" in
The Ground.

1/4 CORNER
Searched for Original
Wood Post Set in 1871
But Found Nothing. Set
2 1/2" Steel Post 18" in
The Ground.

SECTION CORNER
Searched for Original
Wood Post Set in 1871
But Found Nothing. Set
2 1/2" Steel Post 18" in
The Ground.

1/4 CORNER
Searched for Original
Wood Post Set in 1871
But Found Nothing. Set
2 1/2" Rebar and Steel
Fence Post.

C 1/4 CORNER
Set 1/2" Rebar and
Steel Fence Post.

C-S 1/4 CORNER
Set 1/2" Rebar and
Steel Fence Post.

1/4 CORNER
Searched for Original
Wood Post Set in 1871
But Found Nothing. Set
2 1/2" Steel Fence Post
18" in the Ground.

S-E 1/4 CORNER
Set 1/2" Rebar and
Steel Fence Post.

C-E 1/4 CORNER
Set 1/2" Rebar and
Steel Fence Post.

SECTION CORNER
Found 3" Iron Pipe with
G.L.O. Brass Cap Marked
for Corner - Dated 1914.

1/4 CORNER
Found 1" Iron Pipe with
G.L.O. Brass Cap Marked
for Corner - Dated 1914.

SECTION CORNER
Found 3" Iron Pipe with
G.L.O. Brass Cap Marked
for Corner - Dated 1914.