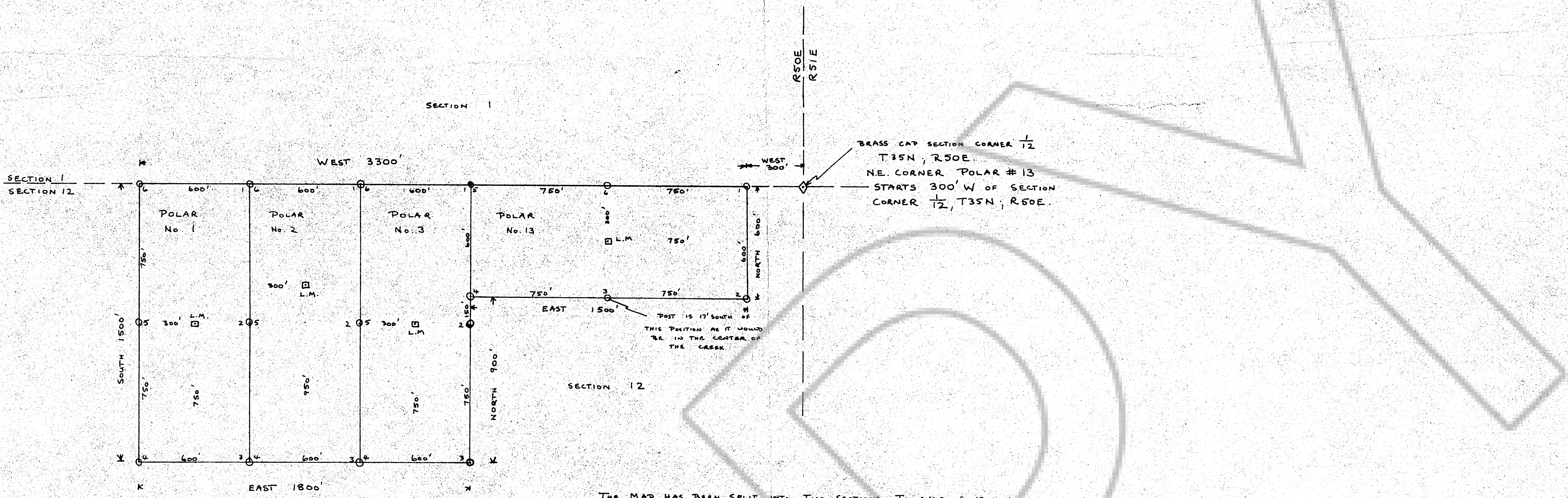


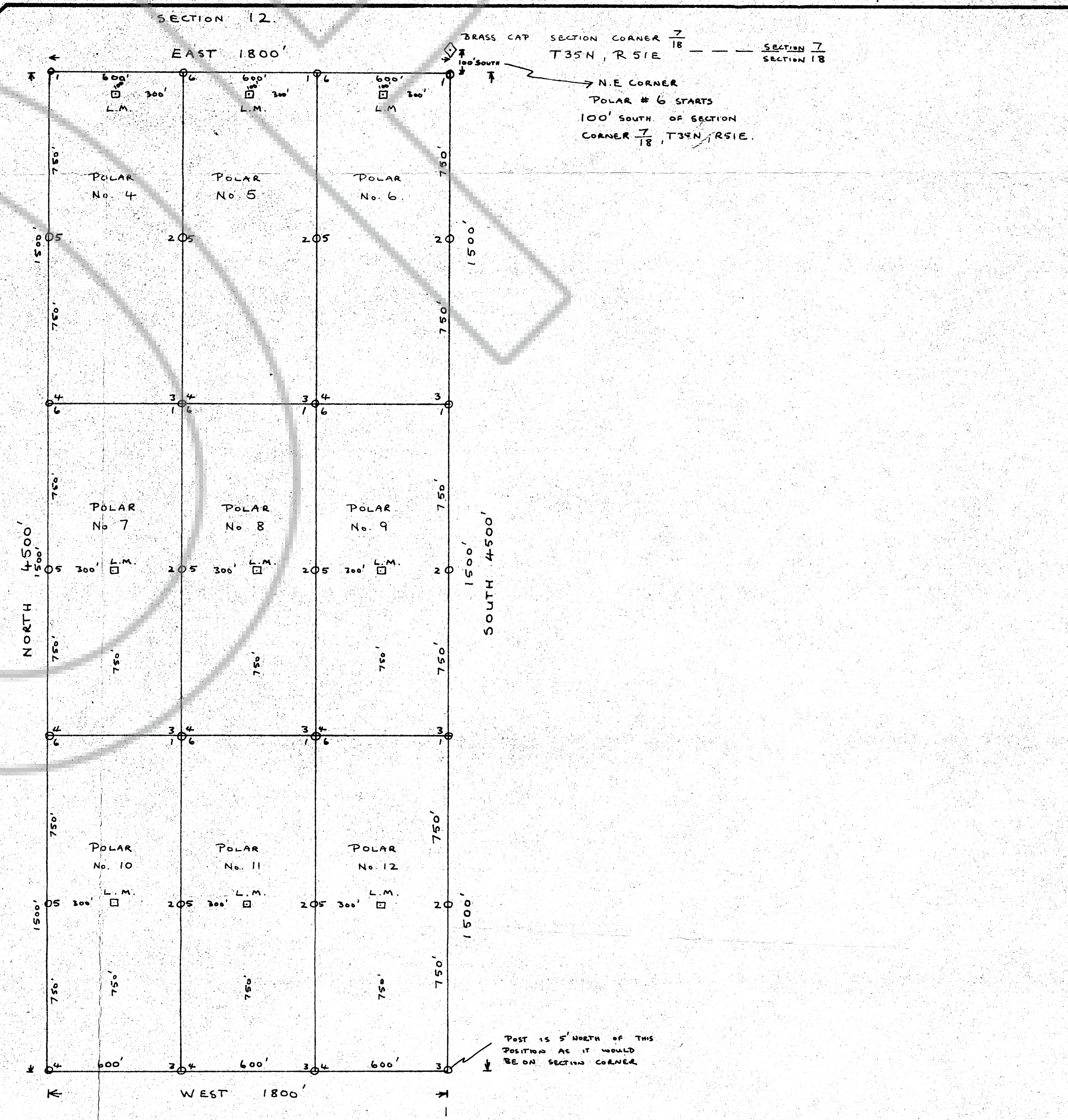
POLAR RESOURCE CO. - POLAR CLAIMS 1 THRU 13.

- LEGEND:-  
 CLAIM CORNER  $\ominus$   
 DISCOVERY MONUMENT  $\square$  L.M.  
 CLAIM BORDER  $\text{---}$   
 SECTION, RANGE, TOWNSHIP LINE  $\text{---}$   
 ALL CORNERS ARE 4 X 4 WOODEN POSTS WITH ALUMINUM 1 1/2 X 3/4 TAGS  
 SECTION CORNER  $\diamond$

SCALE 1" = 400 feet.



THE MAP HAS BEEN SPLIT INTO TWO SECTIONS TO AVOID CONFUSION WHERE THE BLOCKS JOIN BUT AS IS APPARENT THE WEST SIDE LINES OF CLAIMS 4, 7, 10 IS ON THE SAME N-S LINE AS THE EAST SIDE LINE OF CLAIM NO. 3 AND 3=4 OVERLAP IN A N-S DIRECTION ONLY.



MAP OF THE POLAR 1 THROUGH 13 LOPE MINING CLAIMS GROUP  
 IN SECTION 12, TOWNSHIP 35N, RANGE 50E IN THE LYNN  
 MINING DISTRICT, EUREKA COUNTY, NEVADA  
 LOCATED ON THE 20<sup>TH</sup> DAY OF APRIL 1976 BY  
 POLAR RESOURCE CO.  
 1070 SILVER STREET, ELKO, NEVADA 89801.

Filed  
 AT THE REQUEST OF  
 Polar Resource Co.  
 on May 3, 1976  
 at 30 mins past 11 A.M.  
 WILL A. DePAOLI  
 RECORDS  
 OF EUREKA COUNTY, NEVADA  
 Will A. DePAOLI  
 61185  
 Fee \$195.00