

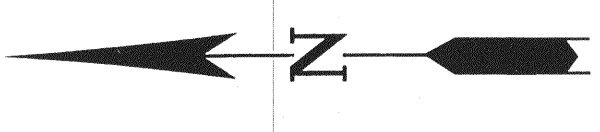
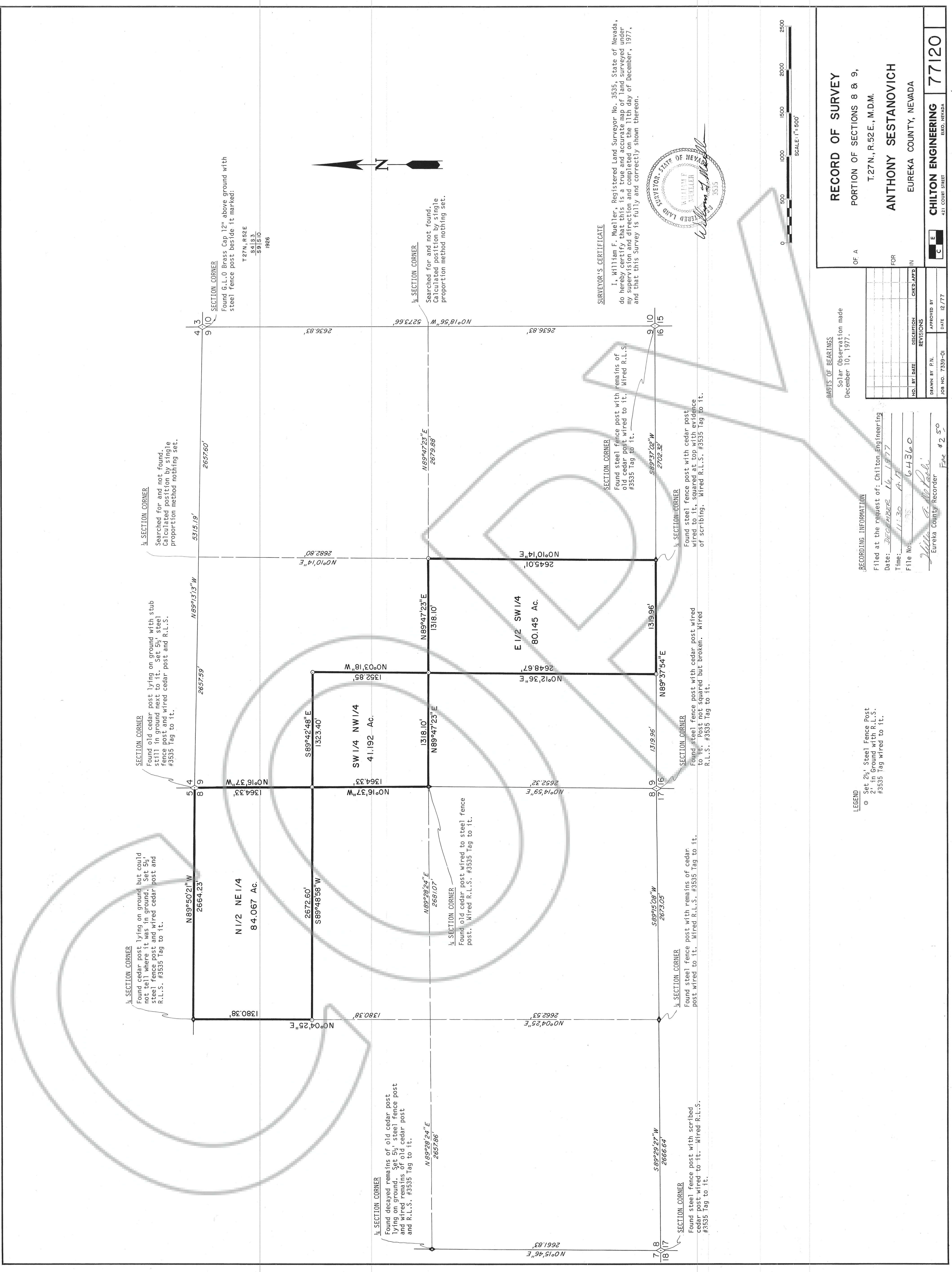
MONITORING 2012-27 MONITOR

DRAWING NUMBER
SARCO PRODUCTS • NEW HOPE, MINNESOTA
REORDER BY PART NUMBER 6551

DRAWING NUMBER
SARCO PRODUCTS • NEW HOPE, MINNESOTA
REORDER BY PART NUMBER 6551

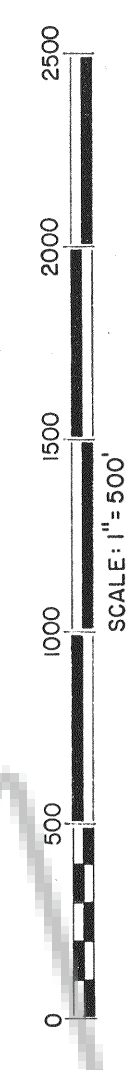
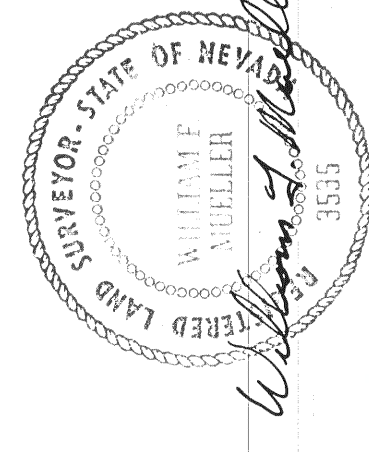
DRAWING NUMBER
SARCO PRODUCTS • NEW HOPE, MINNESOTA
REORDER BY PART NUMBER 6551

DRAWING NUMBER
SARCO PRODUCTS • NEW HOPE, MINNESOTA
REORDER BY PART NUMBER 6551



SURVEYOR'S CERTIFICATE

I, William F. Mueller, Registered Land Surveyor No. 3535, State of Nevada, do hereby certify that this is a true and accurate map of land surveyed under my supervision and direction and completed on the 11th day of December, 1977, and that this Survey is fully and correctly shown thereon.



RECORDING INFORMATION
Filed at the request of: Chilton Engineering
Date: DECEMBER 16, 1977
Time: 11:30 A.M.
File No: 64360

REVISIONS

NO.	DATE	DESCRIPTION	CHKD.	APP'D.

APPROVED BY
JOB NO. 7339-01 DATE 12/77

RECORD OF SURVEY
PORTION OF SECTIONS 8 & 9,
T.27N., R.52E., M.D.M.
ANTHONY SESTANOVICH
EUREKA COUNTY, NEVADA

CHILTON ENGINEERING 77120
EUREKA, NEVADA
421 COURT STREET

64360

LEGEND
○ Set 2 1/2" Steel Fence Post
2' in Ground with R.L.S.
#3535 Tag wired to it.

BASIS OF BEARINGS
Solar Observation made
December 10, 1977.

Drawn by: W. F. Mueller
Eureka County Recorder
Fee \$2.50