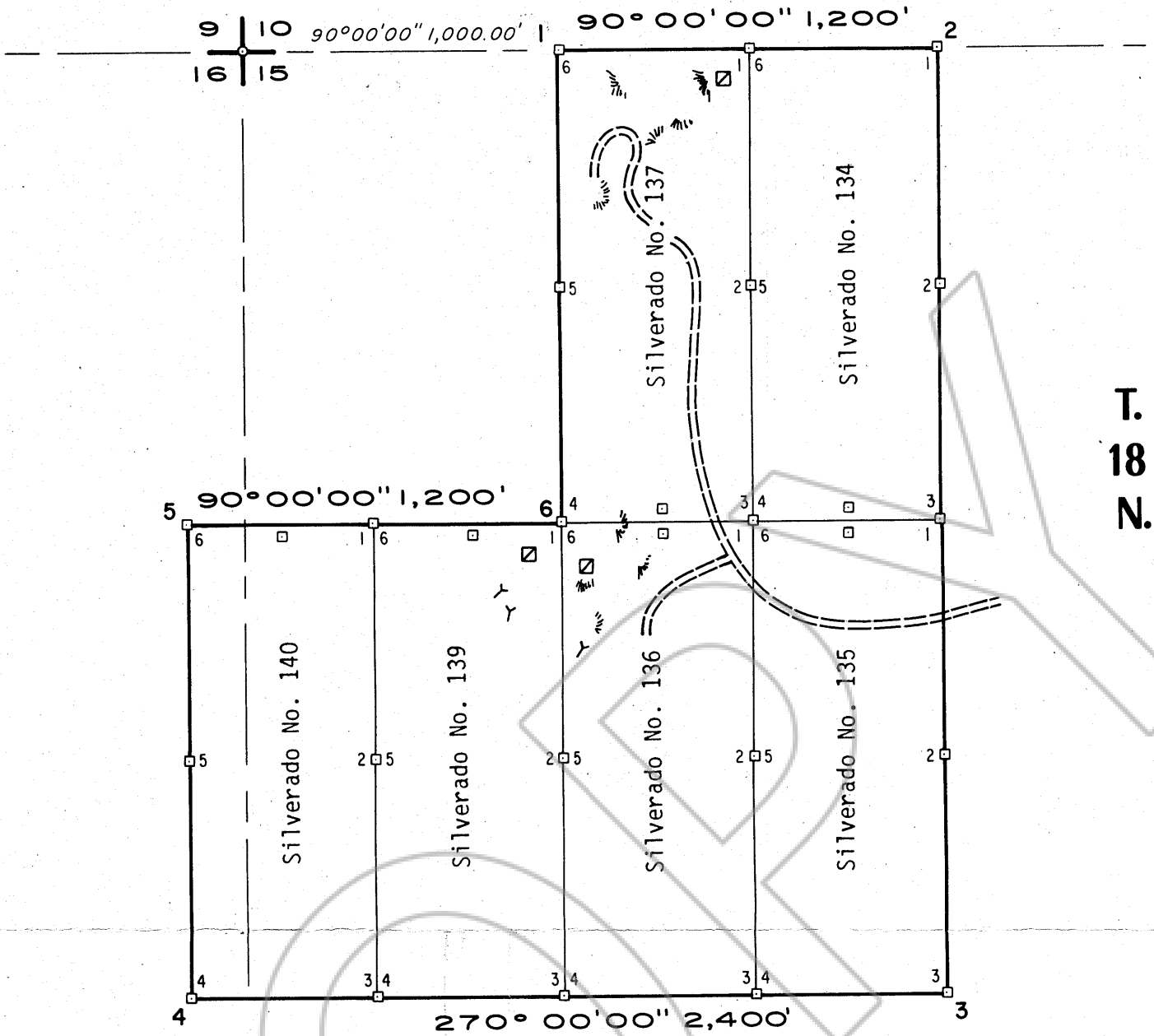


R. 52 E.



T. 18 N.

Silverado Claim Nos. 134 & 137

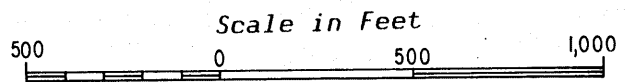
2 Rex T. Thomas
1076 No. 500 West, Provo, Utah

Silverado Claim Nos. 135 & 136

2 Larry V. Perkins
510 Linden Ave., Rexburg, Idaho

Silverado Claim Nos. 139 & 140

2 Ross L. Mason
949 East 9th, Mesa, Arizona



Staked by L.H. Erickson December 1977

Filed
AT THE REQUEST OF
Eagle Exploration Services Inc.
on February 13, 1978
at 15 mins. past 2 P. M.
RECORDS
OF EUREKA COUNTY, NEVADA
WILL A. DePAOLI
Recorder
File No. 64630 Fee \$ 90.00

SILVERADO-DIAMOND PROJECT		
P.O. BOX 415 - EAST ELY - NEVADA - 89315		
Property Map SILVERADO CLAIM GROUP		
<i>Eureka Mining District — Eureka County — Nevada</i>		
Scale 1" = 500'	Date Feb. 7, 1978	SD-15
Mapping L. H. Erickson		
Drafting J. Owens		
		Revised