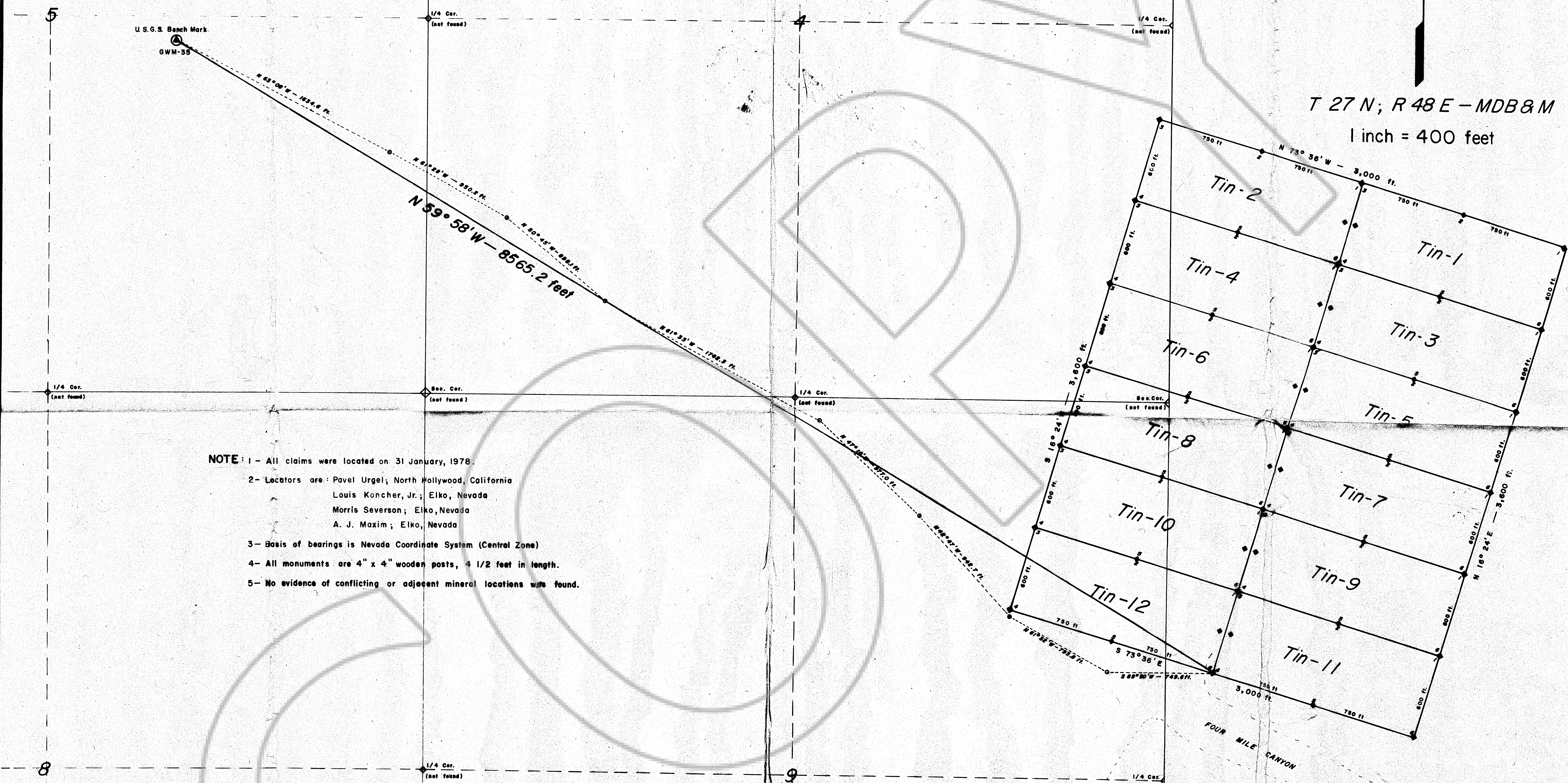


T 27 N; R 48 E - MDB & M
1 inch = 400 feet

U.S.S. Bench Mark
GWM-35



NOTE: 1 - All claims were located on 31 January, 1978.
2 - Locators are: Pavel Urgel; North Hollywood, California
Louis Koncher, Jr.; Elko, Nevada
Morris Severson; Elko, Nevada
A. J. Maxim; Elko, Nevada
3 - Basis of bearings is Nevada Coordinate System (Central Zone)
4 - All monuments are 4" x 4" wooden posts, 1/2 feet in length.
5 - No evidence of conflicting or adjacent mineral locations was found.

MAP
OF
TIN GROUP
OF
Lode Mining Claims
CORTEZ MINING DISTRICT
Eureka County, Nevada

Filed
RECORDED AT THE REQUEST OF
LOUIS KONCHER, JR.
on April 15, 1978
at 10 min. past 11 A. M.
RECORDED BY
OF EUREKA COUNTY, NEVADA
WILL A. DEPAOLI
Fee \$ 1.00

A. J. M. 1 April, 1978