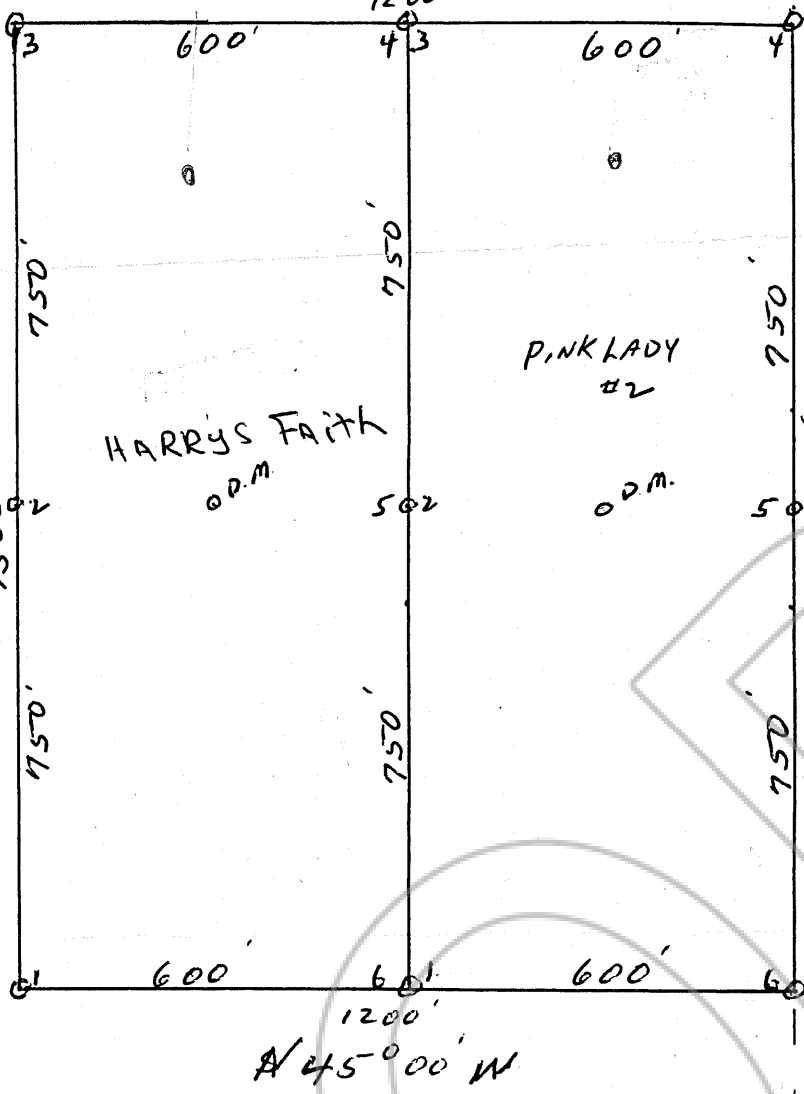


SCALE 1" = 300'

S 45° 00' E
1200'



N 45° 00' E
1500'

HARRYS FAITH
O.D.M.

PINK LADY
#2
O.D.M.

S 45° 00' W
1500'

N 45° 00' W
1200'

LOCATED IN CORTÉZ MINING DISTRICT
 T-27-N R-46-E
 SEC-35+26 (APPROX) UNSURVEYED AREA
 EUREKA COUNTY, NEVADA
 CORTÉZ QUAD MAP. 15 MINUTE SERIES 1938.

LOCATED BY LOUISE SOMES
 OCT-24 - 1973
 CRESCENT VALLEY, NEVADA.
 89821

RELOCATED BY
 LUCIA E POLLEY + D HOYD MORRISON
 JULY 15 1978

4750

Filed

RECORDED AT THE REQUEST OF
D. Lloyd Morrison

on September 11, 1978

at 20 mins. past 3 P. M.

XXXXXXXXXXXXXXXXXXXX

XXXXXXXXXXXXXXXXXXXX

RECORDS

OF EUREKA COUNTY, NEVADA

WILL A. DePAOLI

Recorder

File No. 66128 Fee \$ 20.00

CORNER #6
BLACK LADY