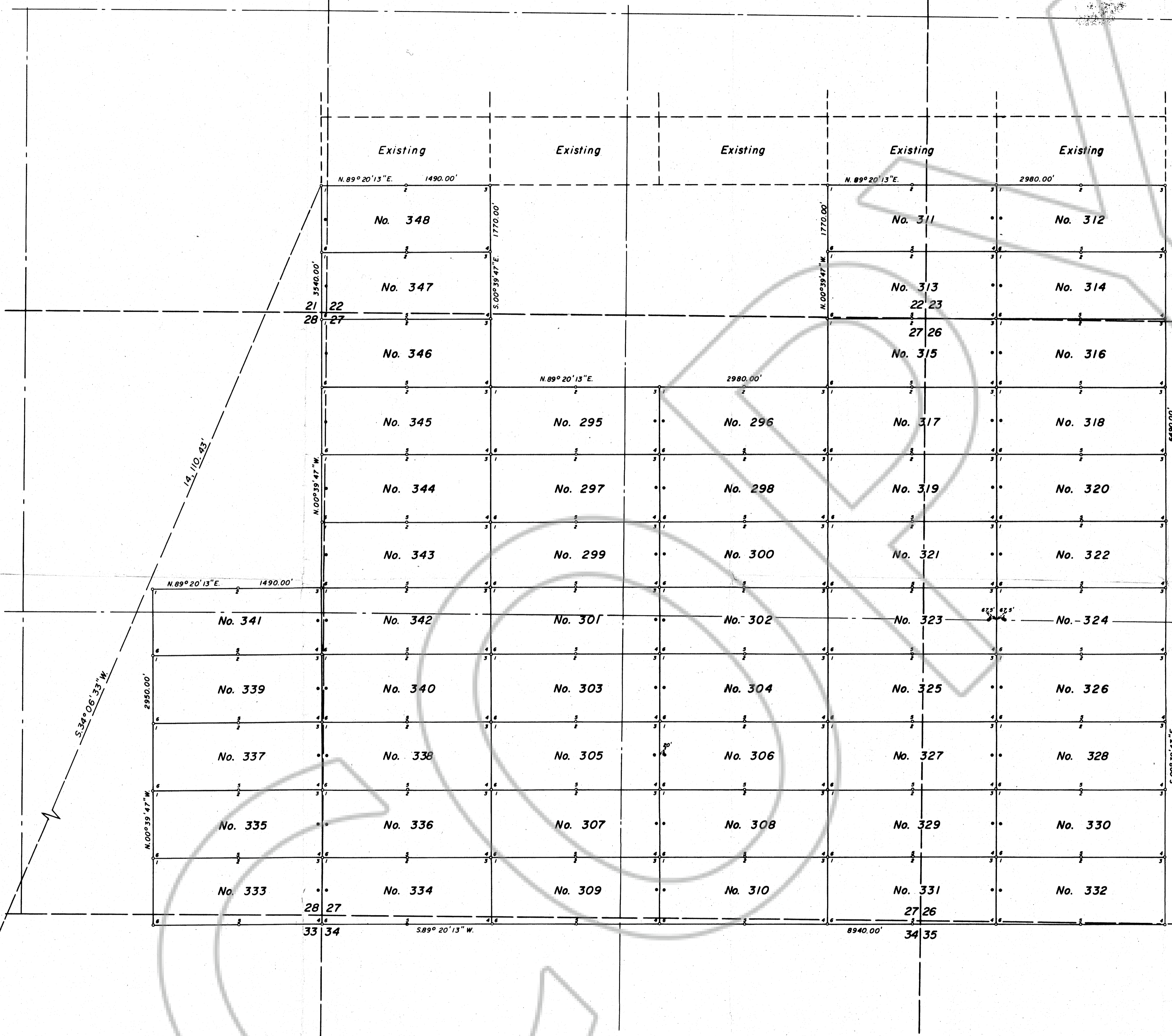
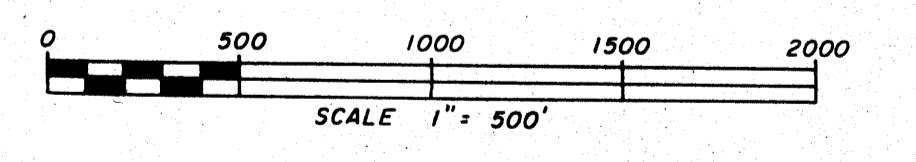


T. 26 N., R. 48 E., M. D. B. & M.



NOTES:

1. All Claims are 600' wide and 1500' long with the Discovery Monuments being 10' in from the end lines unless otherwise noted.
2. At all Corners, Side Centers and Discovery Monuments are 4" x 4" x 4 1/2' long wooden posts with aluminum tags denoting the appropriate corners.
3. • = Corner and Side Center posts
* = Discovery Monuments
4. NEE Nos. 311 through 330 located on August 21, 1978.
NEE Nos. 295 through 310, 331 through 346 located on August 23, 1978.
NEE Nos. 347 & 348 located on August 30, 1978.
5. These claims are located by Placer Amex, Inc.
P.O. Box 769
Ely, Nevada 89301
6. There are a total of 54 claims



Sec. 32 T. 26 N., R. 48 E., M. D. B. & M. (PARTIALLY UNSURVEYED)
5 4 T. 25 N., R. 48 E., M. D. B. & M.

Filed
AT THE REQUEST OF
BOUNDY & FORMAN, INC.
on October 18, 1978
at 3:35 p.m. past 10 A.M.
RECORDS
OF EUREKA COUNTY, NEVADA
WILL A. DePAOLI
Recorder
File No. 66576. Fee \$ 810.00

66576

SURVEYED & MAPPED
BY
BOUNDY & FORMAN, INC.
ELY, NEVADA
OCTOBER, 1978

MAP SHOWING THE
NEE LODE CLAIMS NOS. 293-348
LOCATED IN
T. 26 N., R. 48 E., M. D. B. & M.
IN THE
CORTEZ MINING DISTRICT
EUREKA COUNTY, NEVADA
FOR
PLACER AMEX, INC.