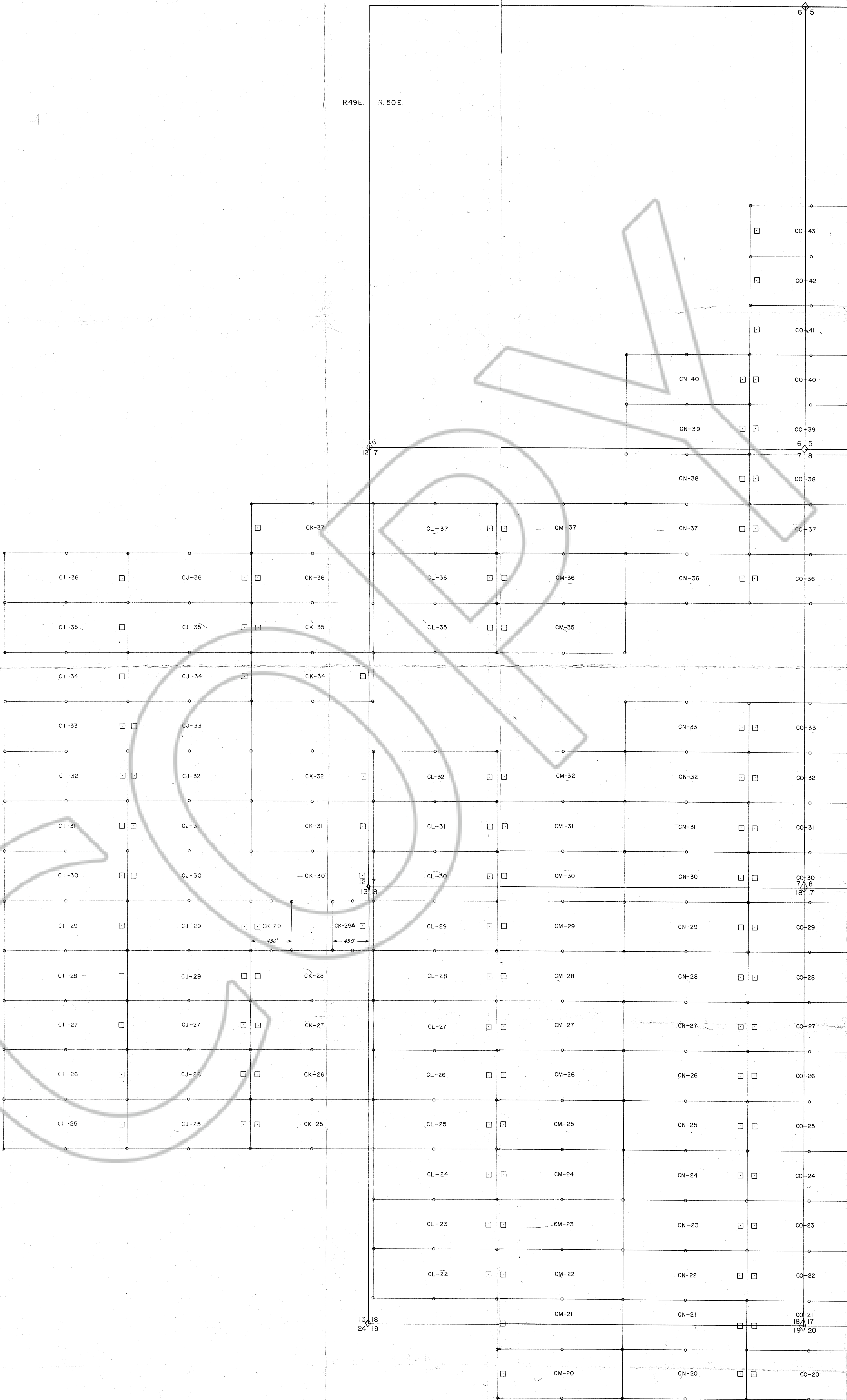
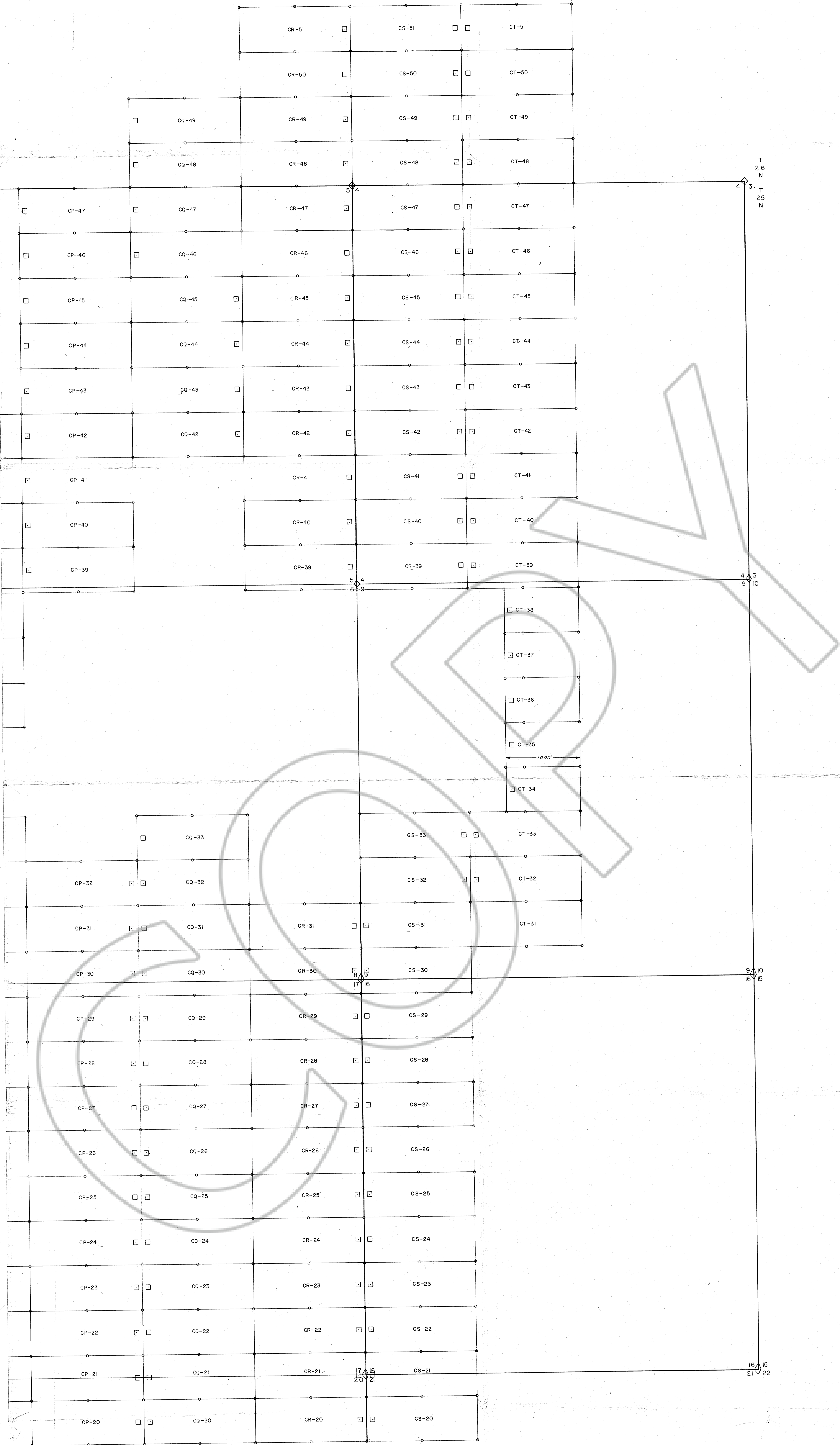
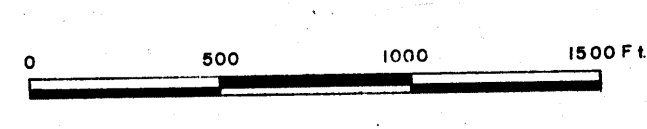


R. 49E. R. 50E.





AHO MINING CORPORATION
 Location map of mining claims in J.D. area, Red Hill
 (organized) mining district, Eureka County, Nevada
 located in Sec. 32, 33 T 26N. R 50E., Sec. 12, 13
 T 25N. R 49E., Sec. 4, 5, 6, 7, 8, 9, 16, 17, 18, 19, 20, 21
 T 25N. R 50E. Sept. Oct. 1978



67026

Filed
 1978 AT THE REQUEST OF Aho Mining Corporation
 on November 27, 1978, at 30 min. past 10 P.M. in
 the RECORDS OF
 EUREKA COUNTY, NEVADA. WILLIS A. DePAOLI Recorder
 File No. 67026 Fee \$ 375.00

DATES OF LOCATION

- | | |
|-----------------|----------------------|
| Sept. 7, 1978 | Sept. 11, 1978 |
| CS 20-33 | CJ 25-29, 34-36 |
| CT 31-51 | CK 25-32, 34-37, 29A |
| CR 20-31 | CL 27-32, 35-37 |
| CP 20-32 | CM 27-32, 35-37 |
| CQ 20-33 | CO 42-43 |
| Sept 8, 1978 | Sept. 12, 1978 |
| CN 20-24 | CP 39-47 |
| GO 20-24 | CQ 42-49 |
| Sept 9, 1978 | CS 39-51 |
| CO 25-33, 36-41 | CT 34-51 |
| CN 25-33, 36-40 | Sept. 13, 1978 |
| CL 22-26 | CR 39-51 |
| CM 20-26 | Sept. 17, 1978 |
| | CJ 30-33 |
| | Oct. 4, 1978 |
| | C1 25-36 |

KEY
 o Corner or Side Center
 □ Location Monument

NOTE:
 Discoveries are located 10 ft. in from
 claim end lines.
 Claims are 600x 1500' unless otherwise
 noted.