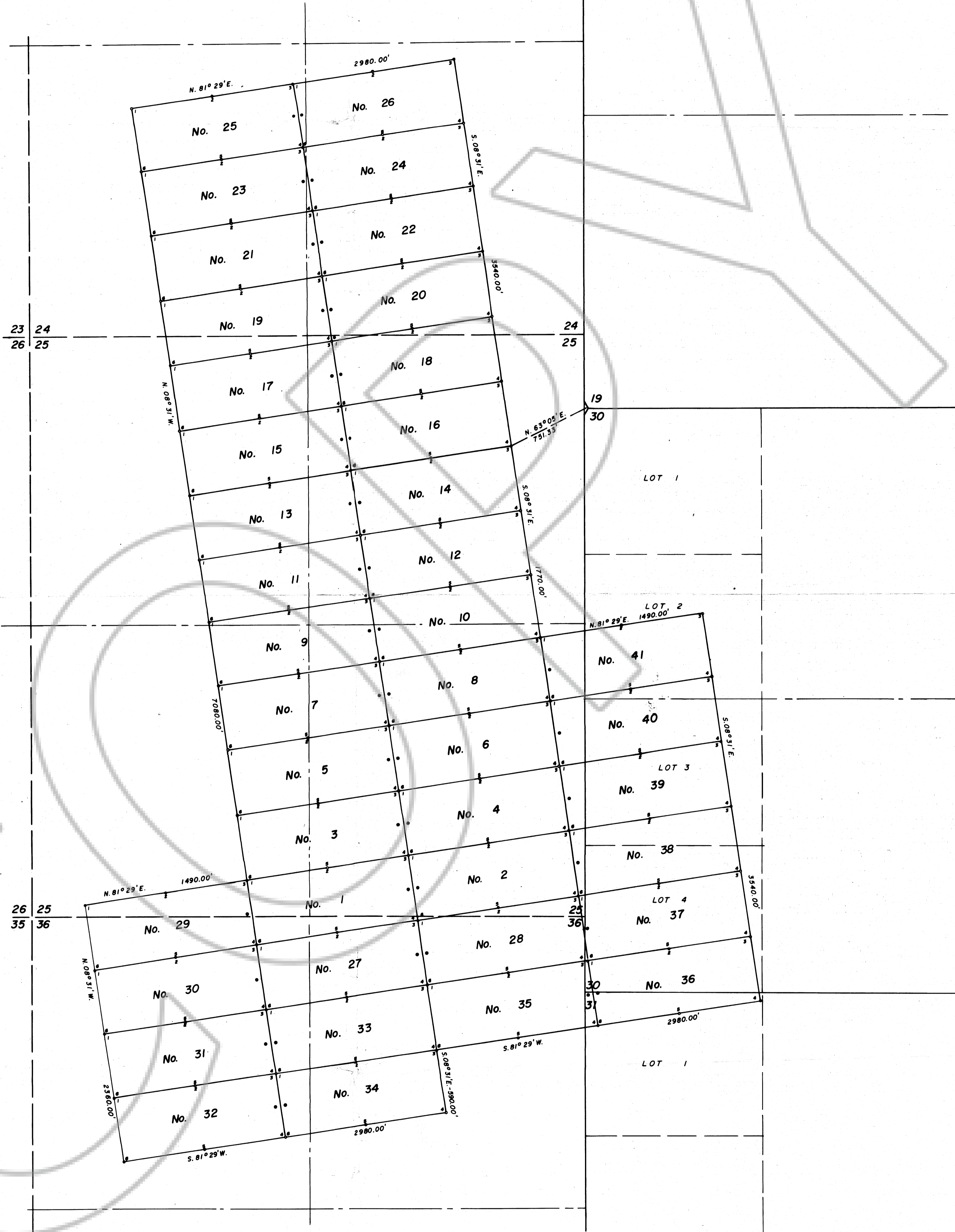


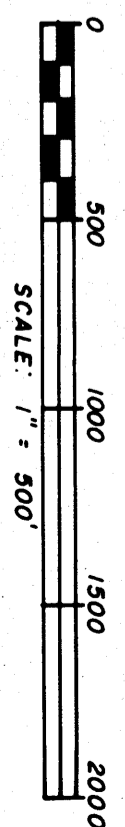
T. 18 N., R. 54 E., M. D. B. & M.

T. 18 N., R. 53 E., M. D. B. & M. (Unsurveyed)



NOTES:

1. All Claims on this map are 600' wide and 1500' long.
2. All Discovery Monuments are 10' in from the end lines.
3. At all Corners, Side Centers and Discovery Monuments are 4"x4"x4/2" long wooden posts with aluminum tags denoting the appropriate corners.
4. • • • Corner and Side Center posts
- • • Discovery Monuments
5. Faith Nos. 29 through 41 located on January 23, 1979
6. Faith Nos. 1 through 28 located on February 4, 1979
7. These Claims are located by Phelps Dodge Corporation Reno, Nevada 89502
8. There are a total of 41 Claims on this map.



Filed AT THE REQUEST OF **Bundy & Foreman, Inc.**
 on **April 17, 1979** at **3:30** p.m. in **Book 11, Page 16**
 SURETY COUNTY, NEVADA WILLIS A. DEPAOLI, Recorder
 File No. **141528**

**MAP SHOWING THE
 FAITH UNPATENTED LODE CLAIMS
 LOCATED IN**

**T. 18 N., R. 53 & 54 E. M. D. B. & M.
 EUREKA COUNTY, NEVADA**

PHILIPS DODGE CORPORATION

Surveyed & Mapped
 by
BOUNDY & FOREMAN, INC.
 ELY, NEVADA
 APRIL, 1979