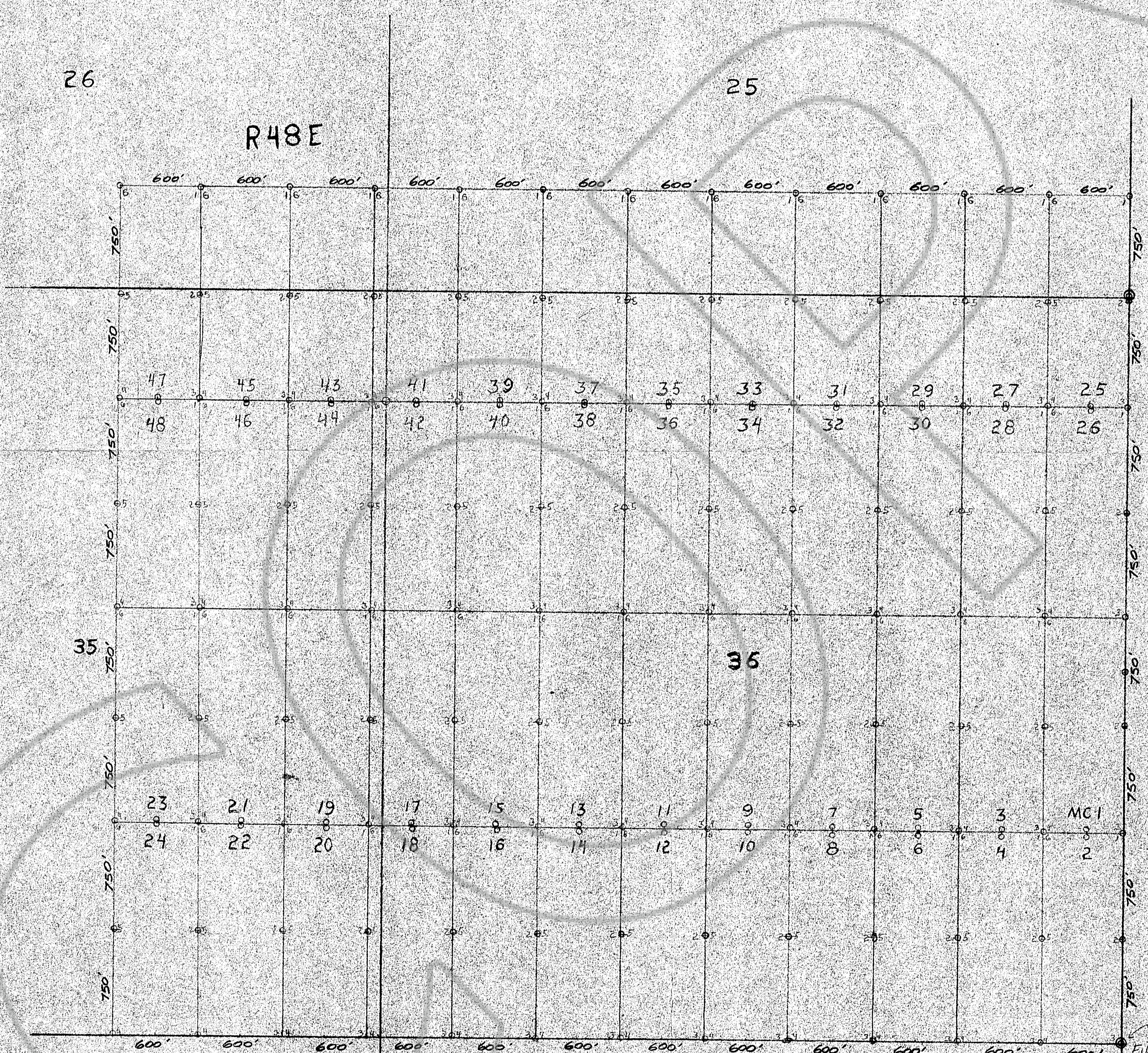


26

25

R48E



TRUE NORTH
T24N

ALL CORNERS ARE 1"x4" WOODEN POSTS
SCALE 1" = 500'

361
1
SURVEY STARTED FROM AND CLAIMS REFERENCED TO THIS SECTION CORNER SEC 536, T24N, R48E

Filed AT THE REQUEST OF Exxon Minerals Co., U.S.A.
on July 2, 1979, at 10:44 AM
EUREKA COUNTY, NEVADA WILLIS A. DePAOLI Recorder
File No. 65628

MAP OF THE MC 1 THRU 18 GROUP OF LODE CLAIMS
LOCATED BY: EXXON CORPORATION
P.O. BOX 120
DENVER, COLO. 80201
DATED: JUNE 9, 1979 BY: GME
LOCATED: MAY 24, 1979 IN: EUREKA CO. NEV.