

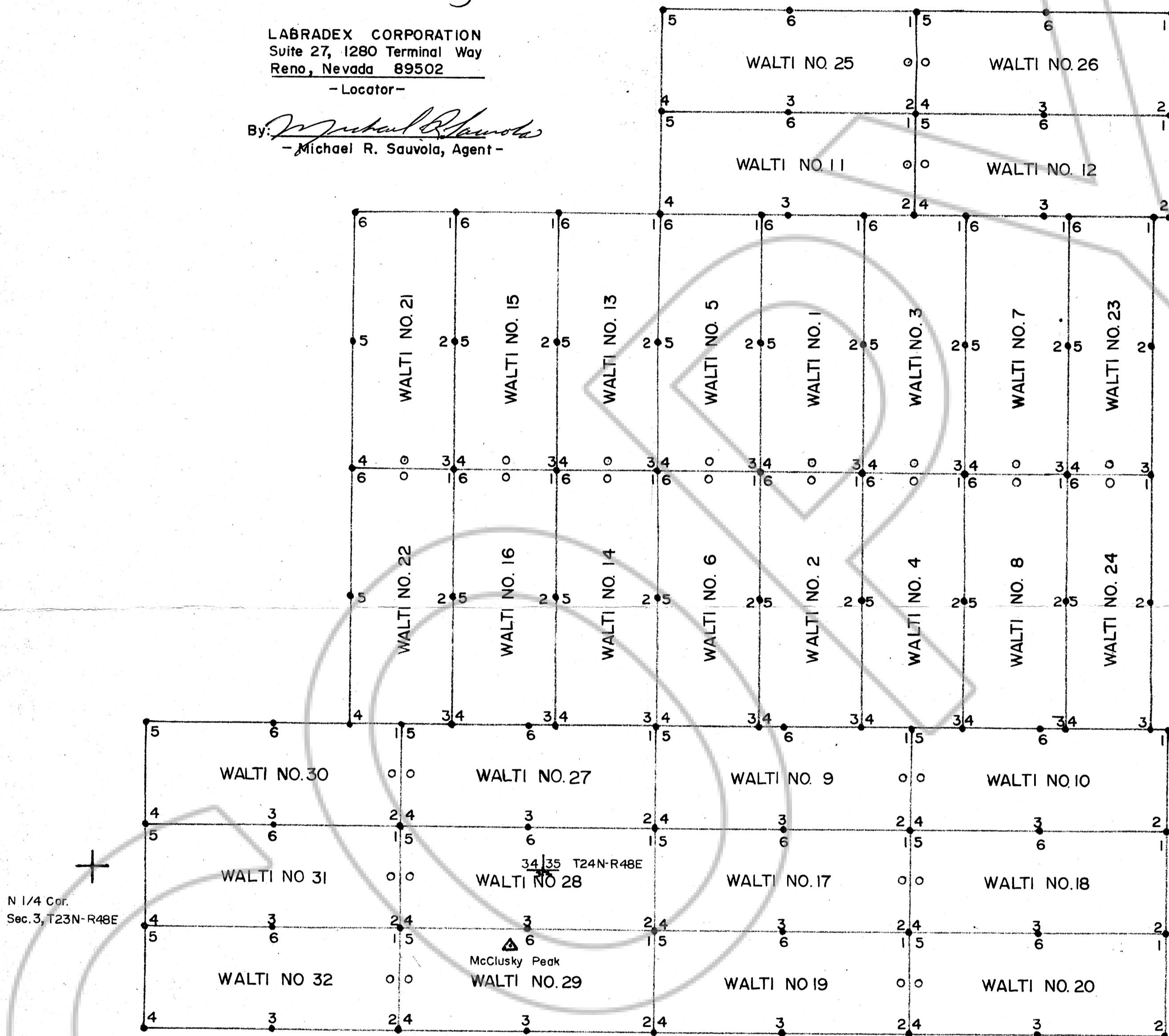
THE WALTl GROUP OF LODE MINING CLAIMS, located on May 25 and 30, June 1, 2, 3, 1979, are situated in Sections 34 and 35, T24N-R48E and Sections 2 and 3, T23N-R48E M.D. B&M, Roberts Mining District, Eureka County, Nevada. They are tied in a general survey to the west 1/4 corner of Section 2, T23N-R48E. This map is filed with and made a part of the Location Certificates of said claims.

Dated this 3<sup>rd</sup> day of July, 1979

LABRADEX CORPORATION  
Suite 27, 1280 Terminal Way  
Reno, Nevada 89502

-Locator-

By: *Michael R. Sauvola*  
- Michael R. Sauvola, Agent -



LEGEND

- Claim Post
- Location Monument
- △ USGS Control Station

RECORDED AT THE REQUEST OF *Labradex Corporation*  
on July 9, 1979 at 11 mins. past 8 A. M. In  
RECORDS OF  
EUREKA COUNTY, NEVADA. WILLIS A. DePAOLI Recorder  
File No. 68700 Fee \$ 480.00

500' 0 500' 1000'  
1 inch = 500 feet

Map by M.R. Sauvola, June, 1979

LABRADEX CORPORATION RENO, NEVADA	
MAP OF THE WALTl LODE CLAIM GROUP EUREKA COUNTY, NEVADA	