

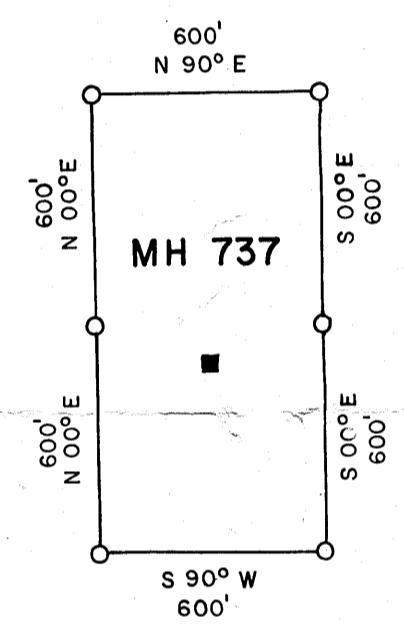
T  
22  
N

R 52 E

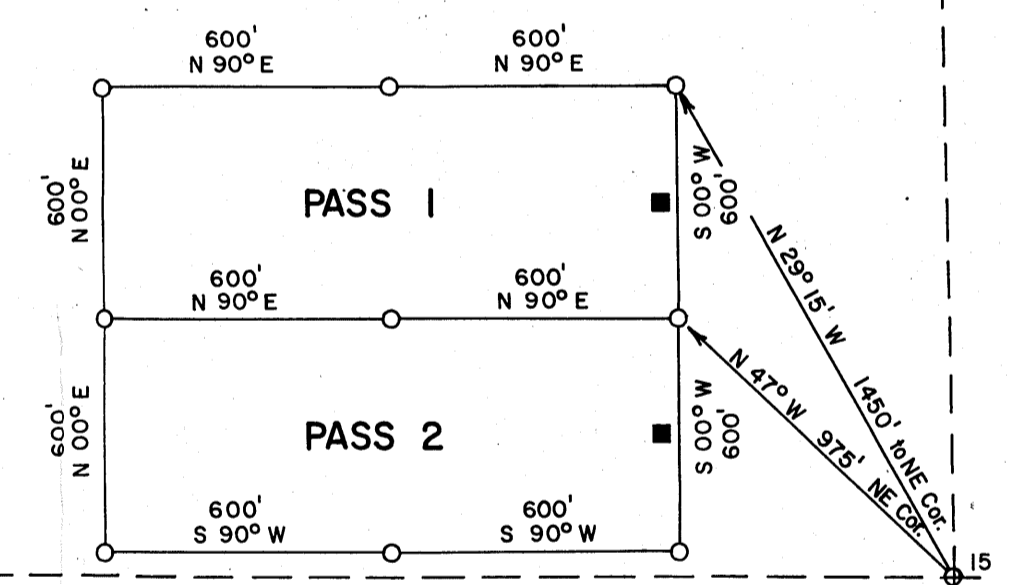
7

16

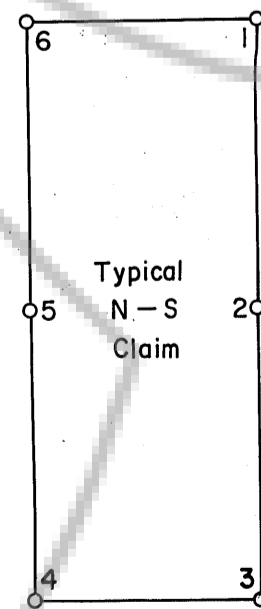
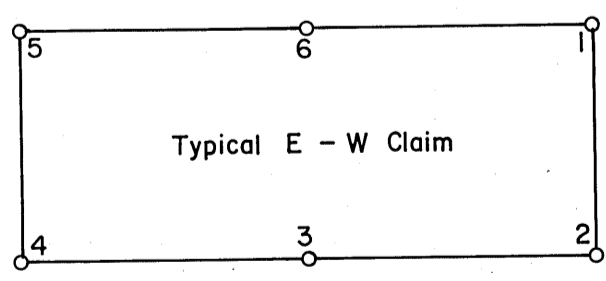
T  
22  
N



N 33° E, 2150' to NE Cor.



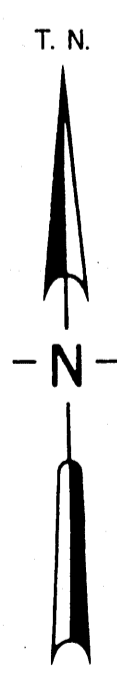
- NOTE:
1. All claim corners are 4" x 4" Wooden Posts.
  2. ■ Discovery Monument
  3. ⊙ Claim Corner Post
  4. Claim corners are typically numbered as shown in sketches below.



Date Located: MH 737 - 7/7/79  
8-16-79

Located by: EXXON MINERALS COMPANY U.S.A.  
P.O. Box 120  
Denver, Colorado 80201

Filed  
RECORDED AT THE REQUEST OF  
*Chris H. Woodlaw*  
on *August 16*, 1979  
at *4:45* mins. past *1* P. M.  
RECORDS  
OF EUREKA COUNTY, NEVADA  
WILL A. DePAOLI  
File No. **6900** Fee \$ *45.00*



EXXON MINERALS COMPANY, U.S.A.	
AREA MT. HOPE	
TITLE MH 737, PASS 1 & 2 LODE CLAIMS	
COUNTY EUREKA	STATE NEVADA
CONTOUR INTERVAL	SCALE 1" = 500'
PROJECT NO.	DATE 7-24-79
CHECKED BY DRAFTED BY <i>pjt</i>	DATE
REVISED DATE BY	