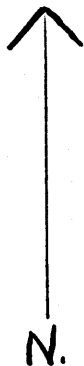
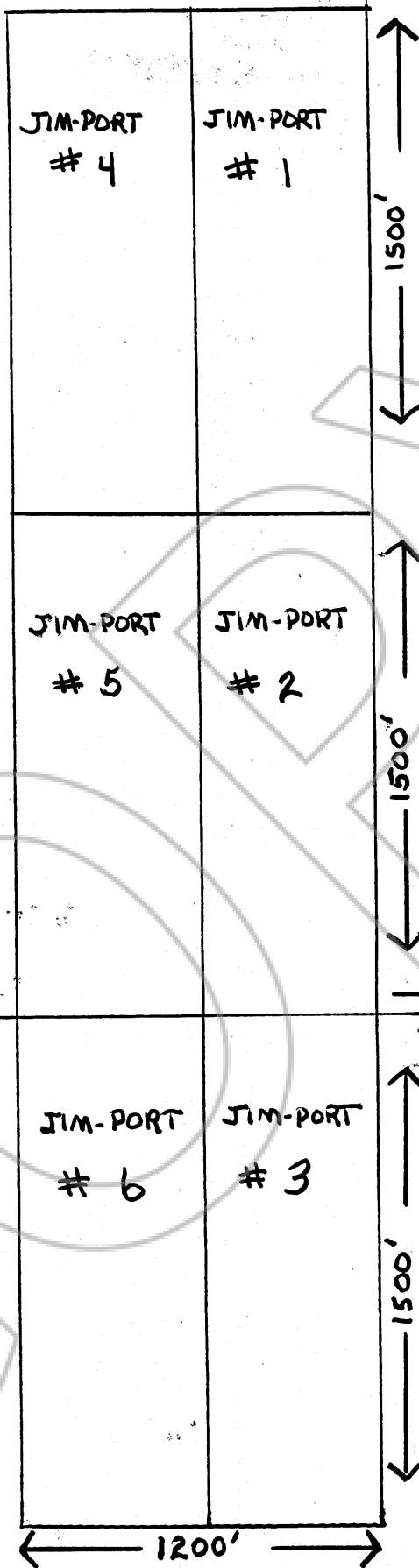


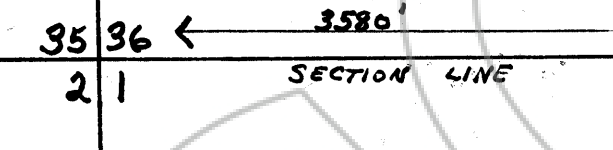
69213



SCALE 1" = 500'

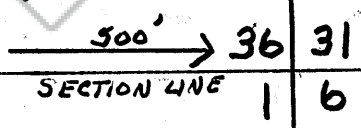


THIS IS TOWNSHIP 27 N.  
 RANGE 52E  
 SECTION 36



THIS IS TOWNSHIP 26N  
 RANGE 52E.  
 SECTION 1

SEC. CRN.



Filed  
~~RECORDED~~ AT THE REQUEST OF  
James D. Wilder  
 on August 28, 19.79  
 at 52 mins. past 8 A. M.  
 RECORDS, ~~XXXXXXX~~ ORIGINAL  
 RECORDS, ~~XXXXXXX~~ RECORDS  
 OF EUREKA COUNTY, NEVADA  
 WILL A. DePAOLI  
 Recorder  
 File No. 69213 Fee \$ 90.00  
 FILE #69213

THESE ARE THE APPROXIMATE LOCATIONS OF THE "JIM-PORT" LODE  
 MINING CLAIM GROUP, LOCATED IN EUREKA COUNTY, STATE OF NEVEDA,  
 TOWNSHIPS 26 - 27 N., RANGE 52 E., SECTIONS 36 & 1