

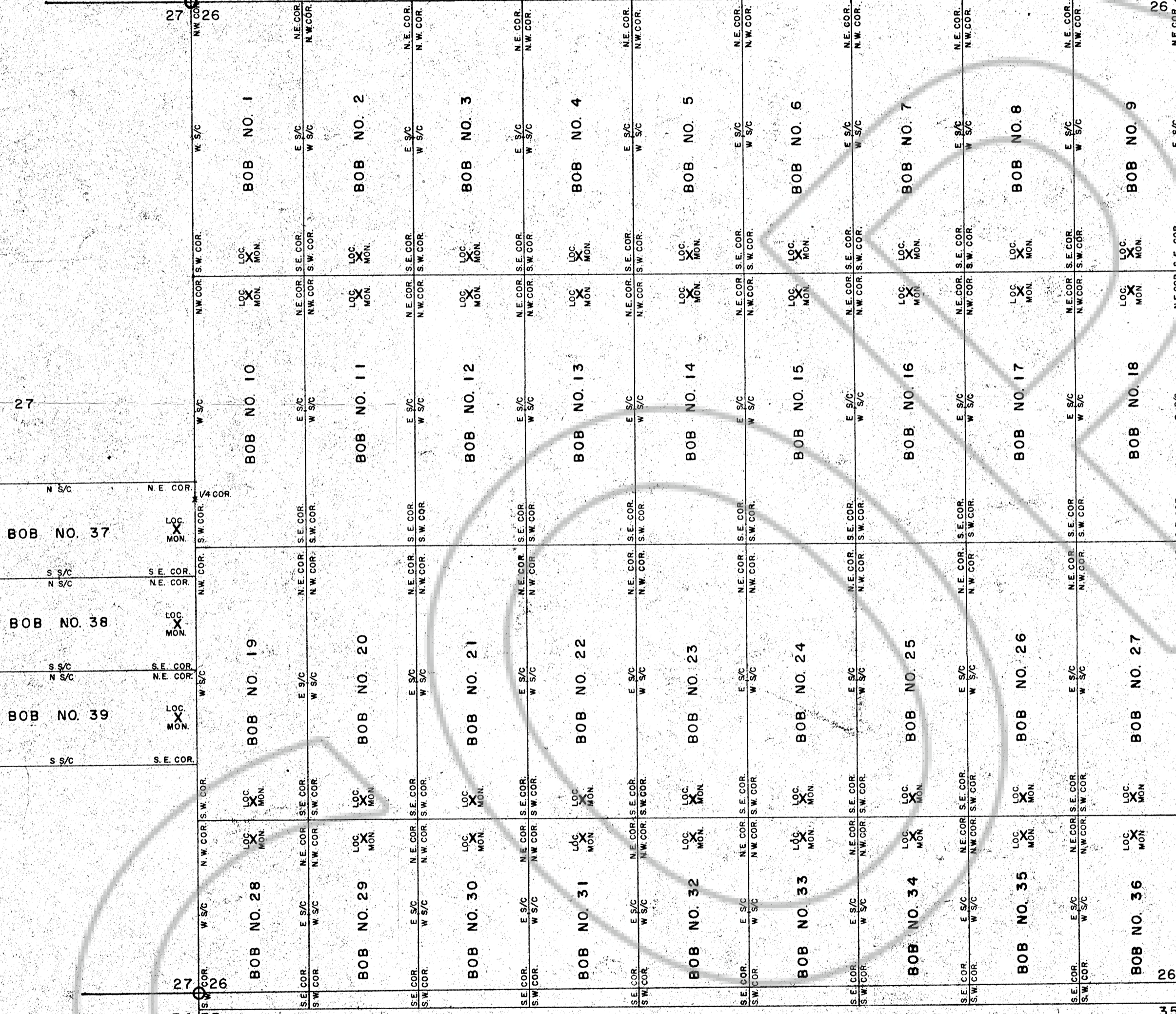
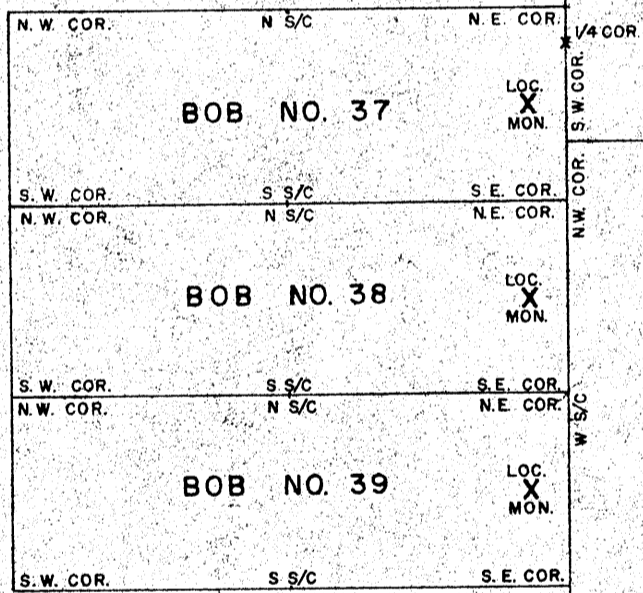
69373



N.W. CORNER OF
BOB NO. 1 CLAIM
AND N.W. CORNER
OF SECTION 26
ARE AT THE SAME
LOCATION

22 23 S 89° 56' W 5274.72'

SECTION 27



ALL LOCATION POSTS ARE CENTERED AND 100' FROM CLAIM LINE.
 ALL CORNERS ARE 4" X 4" X 4 1/2' WOODEN POSTS MARKED WITH ALUMINUM DYMO TAPE.
 ALL CLAIMS ARE 1500' X 600'.

LOCATION OF POSTS

- NO. 1 NORTHWEST CORNER
- NO. 2 NORTHEAST CORNER
- NO. 3 EAST SIDE CENTER
- NO. 4 SOUTHEAST CORNER
- NO. 5 SOUTHWEST CORNER
- NO. 6 WEST SIDE CENTER

DUE WEST 5278.68

DUE NORTH 5287.66

69373

Filed
 RECORDED AT THE REQUEST OF
Carlin Gold Mining Co.
 on August 28, 1979
 at 30 mins. past 11 A. M.
 in Book _____ of _____ RECORDS
 OF EUREKA COUNTY, NEVADA
 WILL A. DePAOLI
 Recorder
 File No. 69373 Fee \$15.00

| BOB GROUP | |
|------------|--|
| LOCATION | LYNN MINING DISTRICT EUREKA COUNTY, NEVADA SEC. 26 & 27 T35N R50E NDB & M |
| TYPE | LODE |
| SCALE | 1"=500' |
| LOCATED BY | CARLIN GOLD MINING COMPANY P.O. BOX 979 CARLIN, NEVADA 89822 |
| DATE | BOB 24-27 & 33-36 MAR. 5 & 6, 1963 BOB 1-18 JAN. 16, 1979 BOB 19-23, 28-32, 37-39 JAN. 18, 1979 BOB 9 AUGUST 28, 1979 |