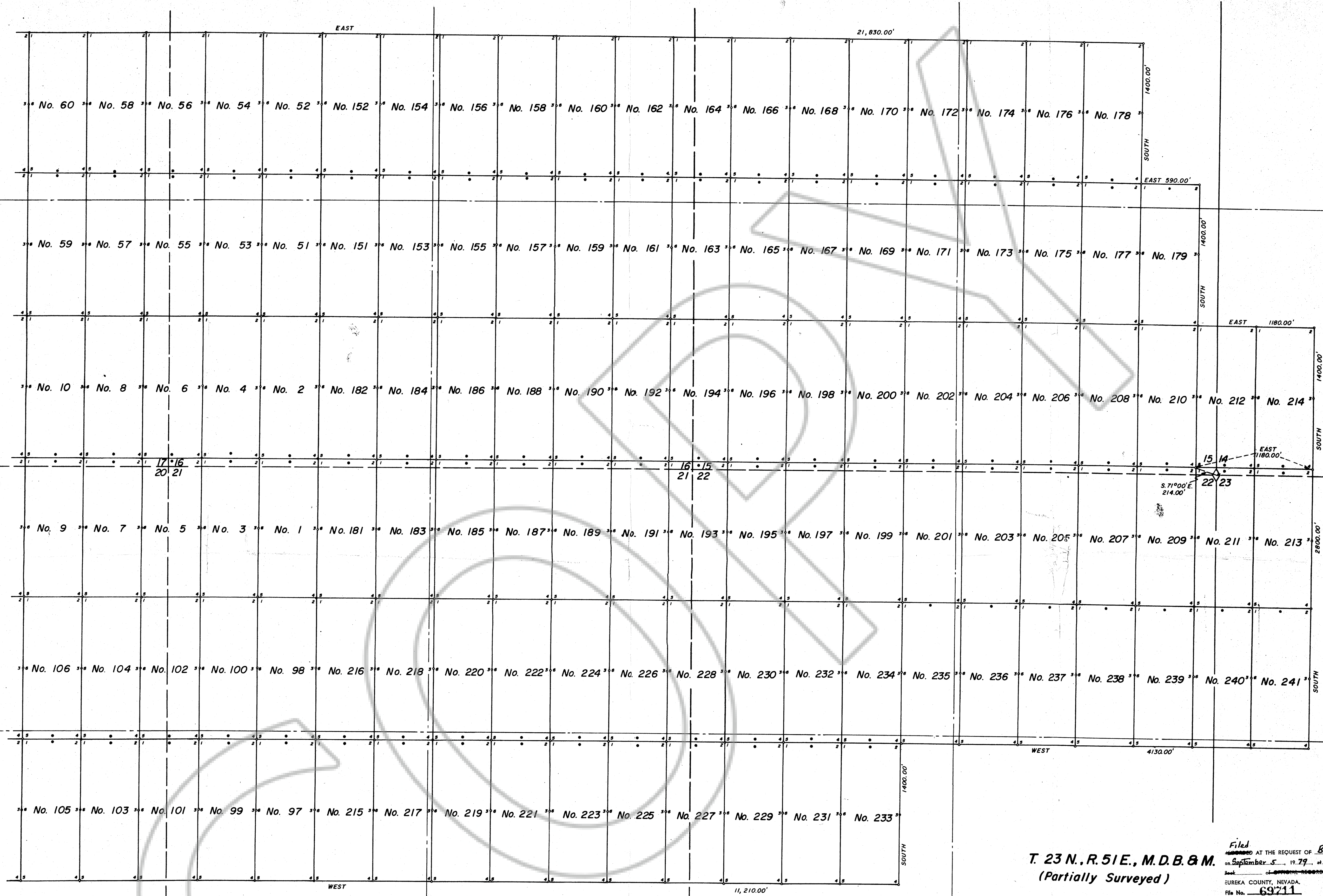


JOINS SHEET No. 2



**NOTES:**

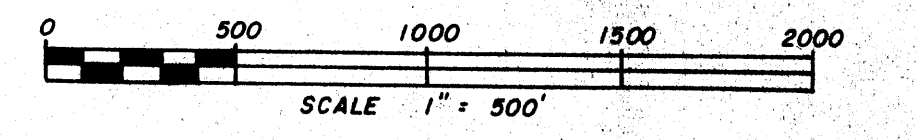
All Claims on this map are 600' wide and 1500' long.  
 All Discovery Monuments are 10' in from the end lines.  
 At all Corners, Side Centers and Discovery Monuments are 4" Diameter x 4 1/2" long posts with aluminum tags denoting the appropriate corners.  
 o = Corner and Side Center posts.  
 \* = Discovery Monuments

BAR Nos. 1 through 50 located on June 26, 1979.  
 BAR Nos. 51 through 86, & 97-128 located on June 27, 1979.  
 BAR Nos. 87 through 96 & 129-150 located on June 28, 1979.  
 BAR Nos. 181 through 222 located on July 6, 1979.  
 BAR Nos. 151 through 179 & 223-245 located on July 7, 1979.  
 There are a total of 244 Claims.  
 These Claims are located by Phelps Dodge Corporation  
 1601 Vassar St.  
 Reno, Nevada 89502

The Section lines are drawn in accordance with Nevada Protraction Diagram No. 158, Unit No. 39.

**T. 23 N., R. 51 E., M.D.B. & M.**  
 (Partially Surveyed)

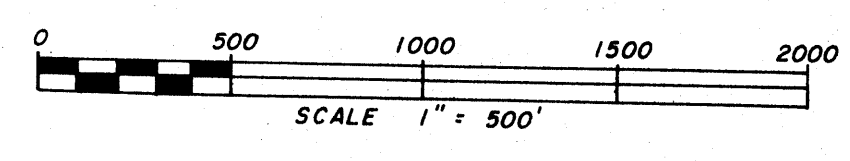
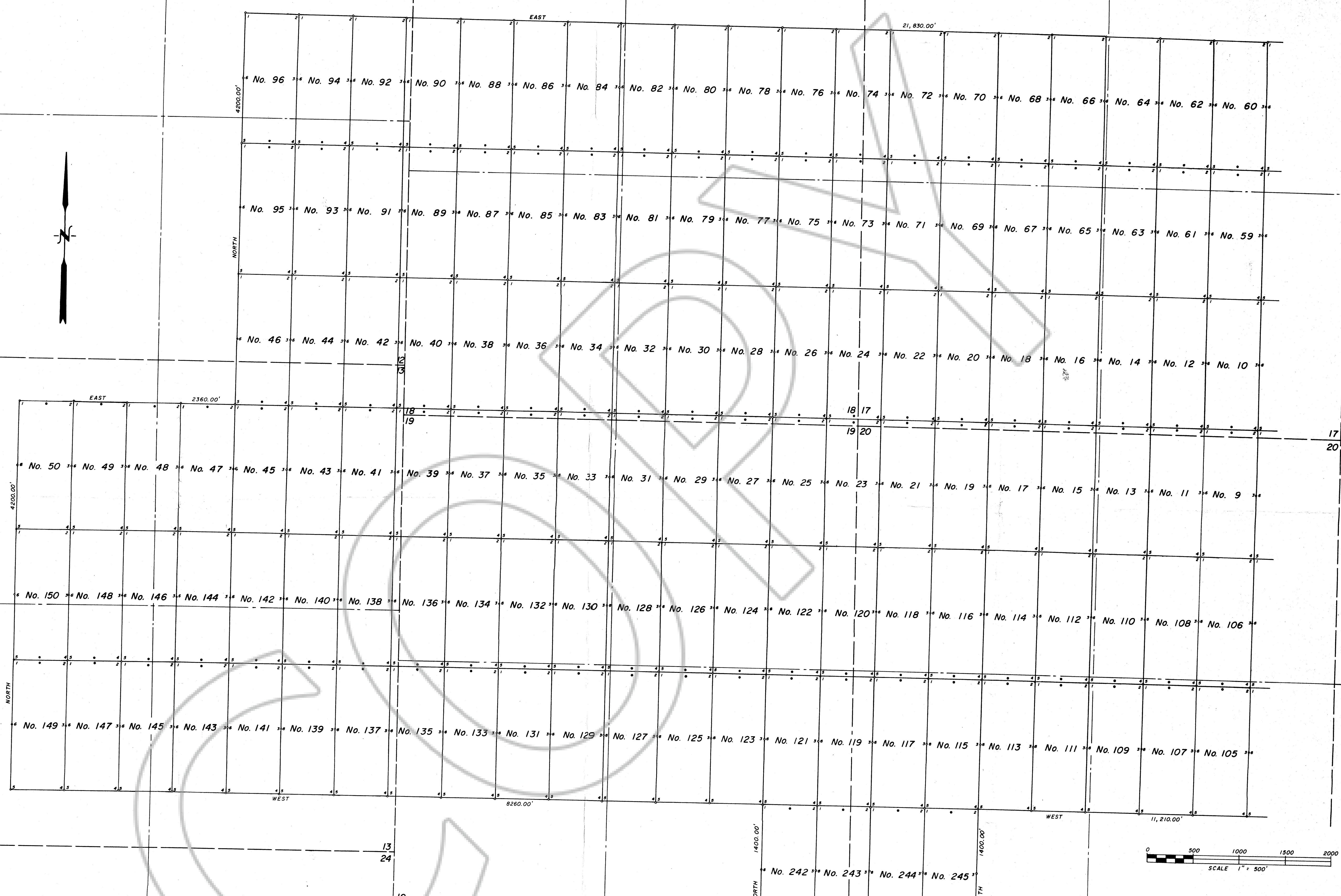
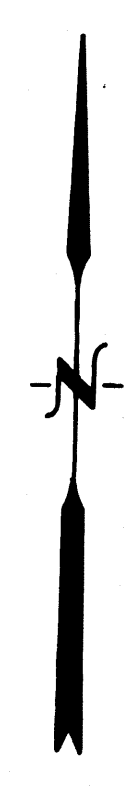
Filed AT THE REQUEST OF Boundy & Forman, Inc.  
 on September 5, 1979, at 00 min. past 11 A.M. In  
 Book of EUREKA COUNTY RECORDS, RECORDS OF  
 EUREKA COUNTY, NEVADA. WILLIS A. DePAOLI Recorder  
 File No. 69711 See 3662  
 Total of Sheets 1 and 2



SHEET No. 1 of 2

SURVEYED & MAPPED  
 BY  
**BOUNDY & FORMAN, INC.**  
 ELY, NEVADA  
 AUGUST, 1979

**MAP SHOWING THE  
 BAR UNPATENTED LODGE CLAIMS  
 LOCATED IN  
 T. 23 N., R. 50 & 51 E., M.D.B. & M.  
 EUREKA COUNTY, NEVADA  
 BY  
 PHELPS DODGE CORPORATION**



T. 23N., R. 50E., M.D.B. & M.  
(Unsurveyed)

T. 23N., R. 51E., M.D.B. & M.  
(Partially Surveyed)

AT THE REQUEST OF *Boundy & Forman, Inc.*  
on September 5, 1979, at 00 min. past 11 P.M. in  
Book of *RECORDS* page  
EUREKA COUNTY, NEVADA. WILLIS A. DePAOLI Recorder  
File No. **69211** Fee \$360.00  
Total of sheets 1 and 2

SURVEYED & MAPPED  
BY  
**BOUNDY & FORMAN, INC.**  
ELY, NEVADA  
AUGUST, 1979

SHEET No. 2 of 2  
**MAP SHOWING THE  
BAR UNPATENTED LODE CLAIMS**  
LOCATED IN  
T. 23 N., R. 50 & 51E., M.D.B. & M.  
EUREKA COUNTY, NEVADA  
BY  
**PHELPS DODGE CORPORATION**