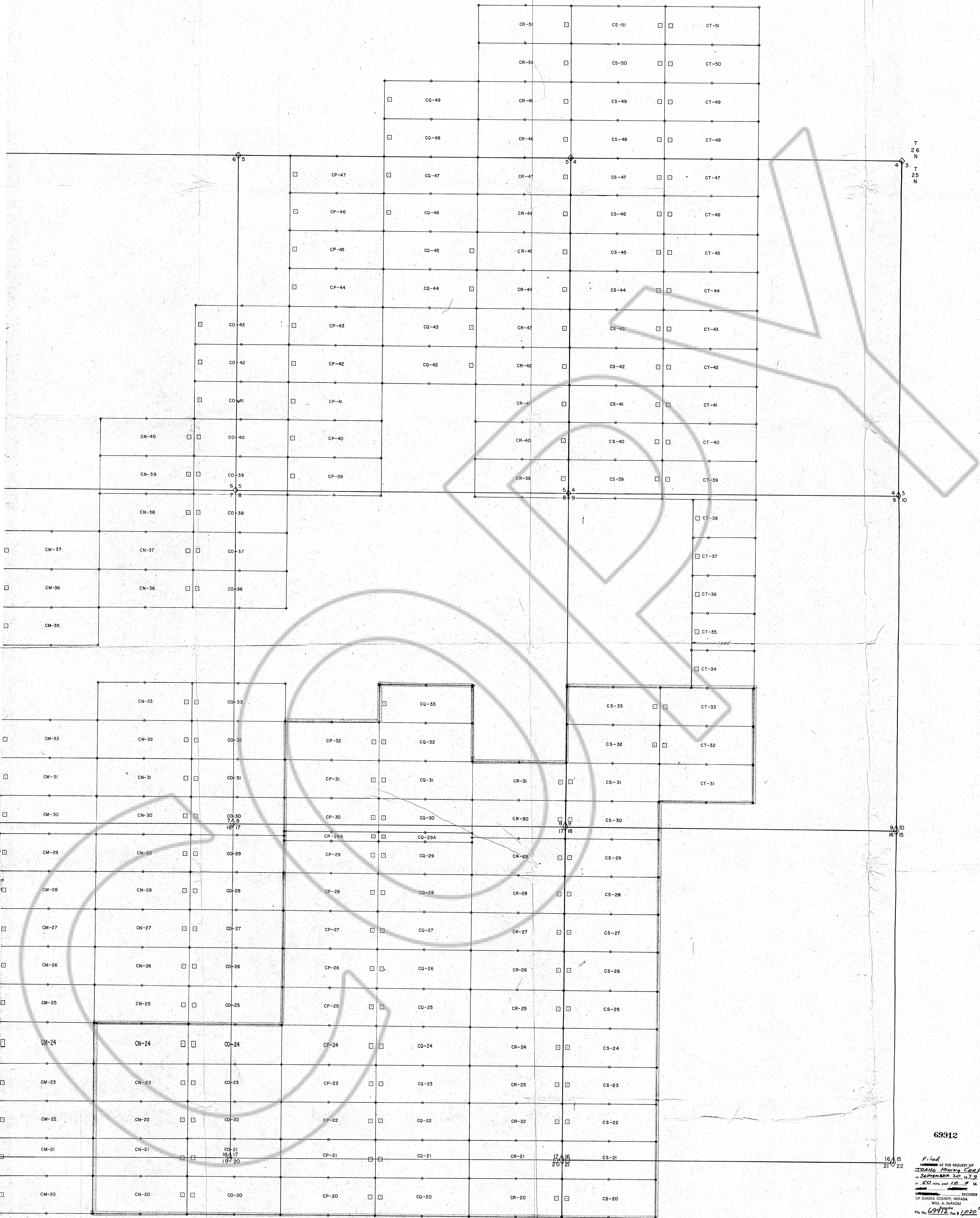
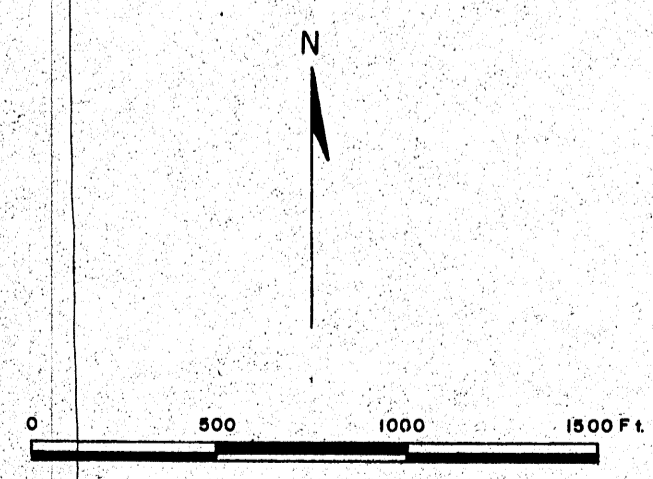


69312



**IDAHO MINING CORPORATION**  
 Location map of mining claims in J.D. area, Red Hill  
 (unorganized) mining district, Eureka County, Nevada  
 Located in Sec. 33, T. 25 N., R. 50 E., Sec. 12, 13  
 T. 25 N., R. 49 E., Sec. 4, 5, 6, 7, 8, 9, 16, 17, 18, 19, 20, 21  
 T. 25 N., R. 50 E. Sept., Oct. 1978



**DATES OF LOCATION**

June 26, 1978	Sept 11, 1978
CS 20-33	CJ 25-29, 34-36
CT 31-33	CK 25-32, 34-37, 29A
CR 20-31	CL 27-32, 35-37
June 27, 1978	CM 27-32, 35-37
CQ 20-33, 29A	CO 42-43
CP 20-32, 29A	Sept 12, 1978
CN 20-24	CP 39-47
CO 20-24	CO 42-49
Sept 9, 1978	CS 39-51
CO 25-33, 36-41	CT 34-51
CN 25-33, 36-40	Sept 13, 1978
CL 22-26	CR 39-51
CM 20-26	Sept 17, 1978
	CJ 30-33
	Oct 4, 1978
	CI 25-36

**KEY**  
 o Corner or Side Center  
 □ Location Monument

**NOTE:**  
 Discoveries are located 10 ft in from claim end lines.  
 Claims are 600x 1500' unless otherwise noted.

69312  
 Filed AT THE REQUEST OF  
 Idaho Mining Corp.  
 in September, 1978, in 2, 2  
 of 50 sheets, page 10 of 11  
 RECORDS  
 OF EUREKA COUNTY, NEVADA  
 WILL A. GARDNER  
 No. 69312, Vol. 1, 1978